

PRELIMINARY

Crystalfontz America, Inc.

SPECIFICATION

CUSTOMER : _____

MODULE NO.: **CFAX12864U1-TFH**

| SALES BY | APPROVED BY | CHECKED BY | PREPARED BY |
|---------------------|--------------------|-------------------|--------------------|
| | | | |
| ISSUED DATE: | | | |

Crystalfontz America, Inc.

12412 East Saltese Avenue
Spokane Valley, WA 99216-0357

Phone: (888) 206-9720

Fax: (509) 892-1203

Email:

techinfo@crystalfontz.com

URL: www.crystalfontz.com

PRELIMINARY

1. Module Classification Information
2. Precautions in use of LCD Modules
3. General Specification
4. Absolute Maximum Ratings
5. Electrical Characteristics
6. Optical Characteristics
7. Interface Description
8. Contour Drawing & Block Diagram
9. Function Description
10. Reliability
11. Backlight Information
12. Inspection specification
13. Material List of Components for RoHS

PRELIMINARY

1. Module Classification Information

CFA X 1 2 8 6 4 U1 – T F H
 ① ② ③ ④ ⑤ ⑥ ⑦

| | | |
|---|---|---|
| ① | Brand : CRYSTALFONTZ AMERICA, INCORPORATED | |
| ② | Display Type : H→Character Type, G→Graphic Type, X→ TAB Type | |
| ③ | Display's logical dimensions: 128 pixels by 64 pixels | |
| ④ | Model variant: U (1→module with ZIF tail) | |
| ⑤ | Backlight Type : | N→Without backlight B→EL, Blue green D→EL, Green W→EL, White F→CCFL, White Y→LED, Yellow Green P→LED, Bule A→LED, Amber R→LED, Red O→LED, Orange G→LED, Green T→LED, White |
| ⑥ | LCD Mode : | B→TN Positive, Gray N→TN Negative, G→STN Positive, Gray Y→STN Positive, Yellow Green M→STN Negative, Blue F→FSTN Positive T→FSTN Negative |
| ⑦ | LCD Polarizer Type/ Temperature range/ View direction | A→Reflective, N.T, 6:00 D→Reflective, N.T, 12:00 G→Reflective, W. T, 6:00 J→Reflective, W. T, 12:00 B→Transflective, N.T,6:00 E→Transflective, N.T.12:00 H→Transflective, W.T,6:00 K→Transflective, W.T,12:00 C→Transmissive, N.T,6:00 F→Transmissive, N.T,12:00 I→Transmissive, W. T, 6:00 L→Transmissive, W.T,12:00 |
| ⑧ | Special Code | CB: |

PRELIMINARY

2. Precautions in use of LCD Modules

- (1) Avoid applying excessive shocks to the module or making any alterations or modifications to it.
- (2) Don't make extra holes on the printed circuit board, modify its shape or change the components of LCD module.
- (3) Don't disassemble the LCM.
- (4) Don't operate it above the absolute maximum rating.
- (5) Don't drop, bend or twist LCM.
- (6) Soldering: only to the I/O terminals.
- (7) Storage: please storage in anti-static electricity container and clean environment.

3. General Specification

| Item | Dimension | Unit |
|----------------------|------------------------------|-------------|
| Number of Characters | 128 x 64 | — |
| Module dimension | 56.0 x 42.5 x 1.9(MAX) | mm |
| View area | 52.0x 33.5 | mm |
| Active area | 47.34x 30.29 | mm |
| Dot size | 0.35 x 0.4 | mm |
| Dot pitch | 0.37 x 0.42 | mm |
| LCD type | FSTN Positive, Transflective | |
| Duty | 1/64 | |
| View direction | 6 o'clock | |
| Backlight Type | LED white | |

PRELIMINARY

4. Absolute Maximum Ratings

| Item | Symbol | Min | Typ | Max | Unit |
|--------------------------|-----------------------------------|-----------------|-----|-----------------|------|
| Operating Temperature | T _{OP} | -20 | — | +70 | °C |
| Storage Temperature | T _{ST} | -30 | — | +80 | °C |
| Input Voltage | V _I | V _{SS} | — | V _{DD} | V |
| Supply Voltage For Logic | V _{DD} -V _{SS} | 1.8 | — | 3.6 | V |
| Supply Voltage For LCD | V _{OUT} -V _{SS} | 6.0 | — | 14.2 | V |

5. Electrical Characteristics

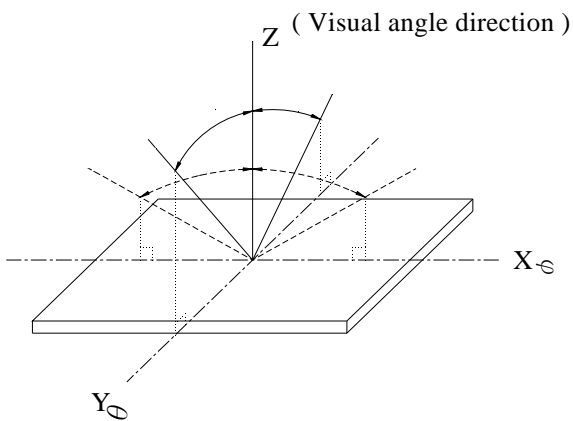
| Item | Symbol | Condition | Min | Typ | Max | Unit |
|--------------------------|-----------------------------------|-----------------------|---------------------|------|---------------------|------|
| Supply Voltage For Logic | V _{DD} -V _{SS} | — | 3.0 | 3.3 | 3.6 | V |
| Supply Voltage For LCD | V _{DD} -V _{OUT} | T _a =-20°C | — | — | — | V |
| | | T _a =25°C | — | 8.5 | — | V |
| | | T _a =70°C | — | — | — | V |
| Input High Volt. | V _{IH} | — | 0.8 V _{DD} | — | V _{DD} | V |
| Input Low Volt. | V _{IL} | — | V _{SS} | — | 0.2 V _{DD} | V |
| Output High Volt. | V _{OH} | — | 0.8 V _{DD} | — | V _{DD} | V |
| Output Low Volt. | V _{OL} | — | V _{SS} | — | 0.2 V _{DD} | V |
| Supply Current | I _{DD} | V _{DD} =3.3V | 0.18 | 0.18 | 0.18 | mA |

6. Optical Characteristics

| Item | Symbol | Condition | Min | Typ | Max | Unit |
|----------------|---------------|-------------|-----|-----|-----|------|
| View Angle | (V) θ | $CR \geq 2$ | 30 | — | 60 | deg |
| | (H) φ | $CR \geq 2$ | -45 | — | 45 | deg |
| Contrast Ratio | CR | — | — | 5 | — | — |
| Response Time | T rise | — | — | 110 | 220 | ms |
| | T fall | — | — | 260 | 520 | ms |

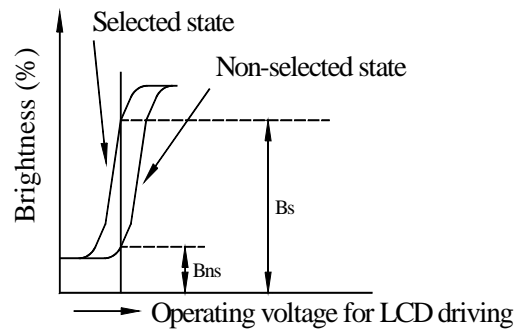
6.1 Definitions

■ View Angles

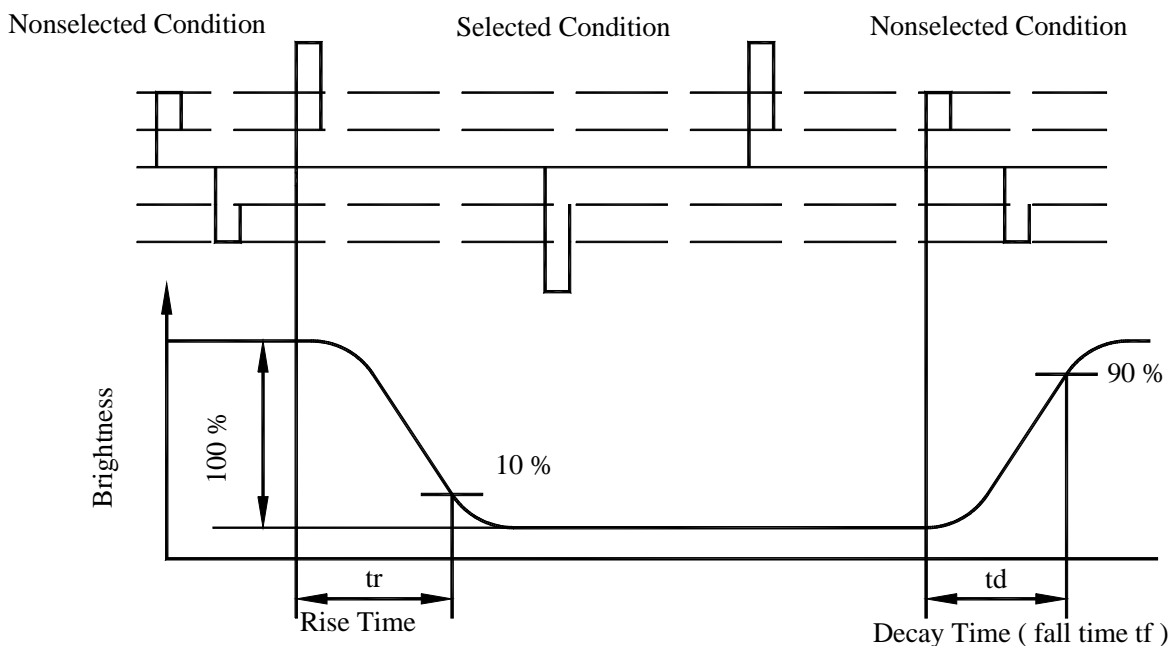


■ Contrast Ratio

$$CR = \frac{\text{Brightness at selected state (BS)}}{\text{Brightness at non-selected state (Bns)}}$$



■ Response Time



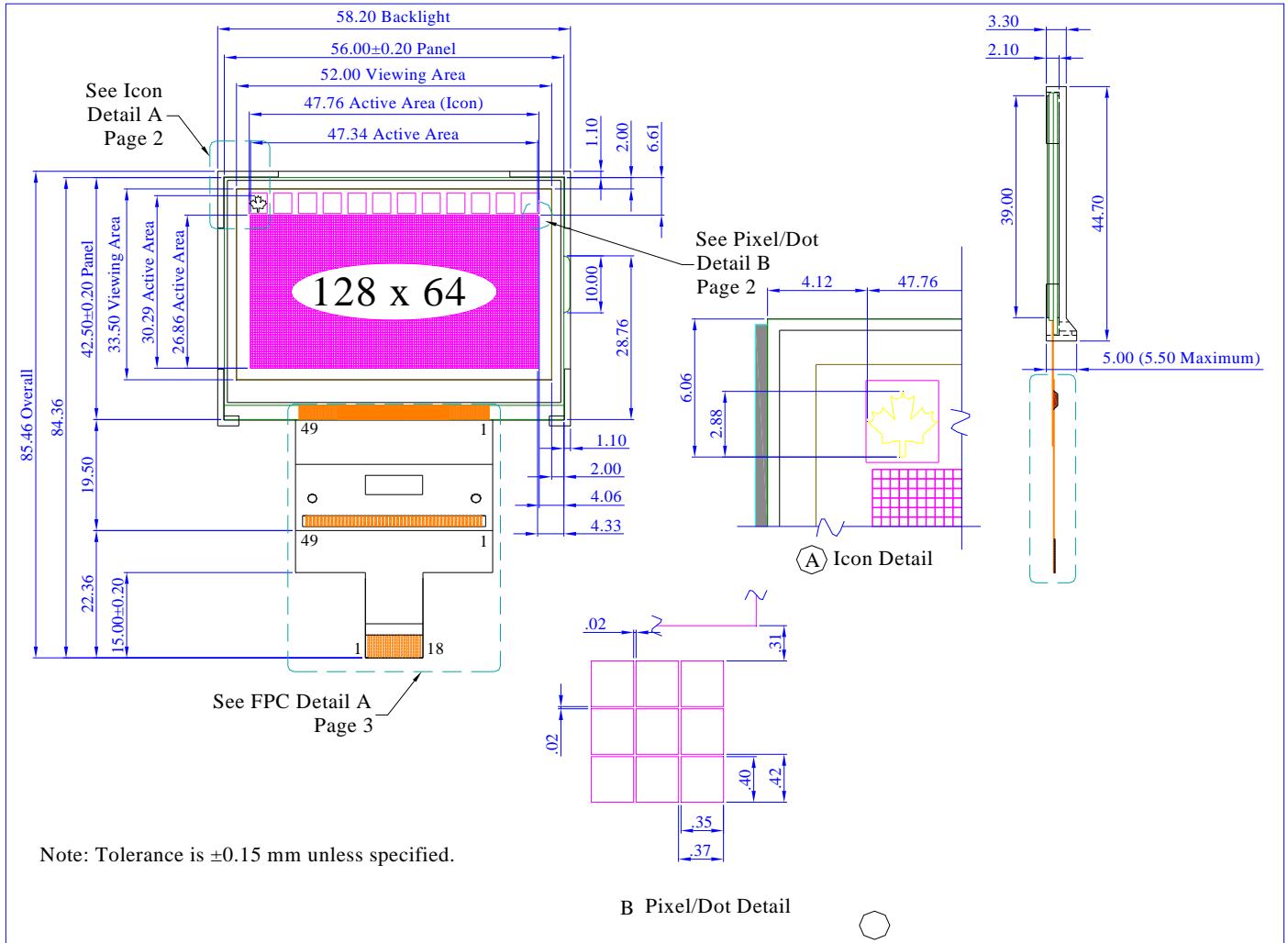
PRELIMINARY


7. Interface Description

| Pin No. | Symbol | I/O | Description | | | | | | | | | | | | | | | |
|---------|--------------|----------|---|--------------|--------------|------|------------|--------------|-----|----|----------|----------|---|-----|----|---------|------------|----------|
| 1 | VDD | — | Power supply pin for logic. | | | | | | | | | | | | | | | |
| 2 | VSS | — | Ground pin, connected to 0V | | | | | | | | | | | | | | | |
| 3 | CS1B | I | Chip select input pins Data/instruction i/o is enabled only when CS1Bis”L”and CS2”H”. When chip select is non-active,DB0 TO DB7 may be high impedance. | | | | | | | | | | | | | | | |
| 4 | CS2 | I | Chip select input pins Data/instruction i/o is enabled only when CS1Bis”L”and CS2”H”. When chip select is non-active,DB0 TO DB7 may be high impedance. | | | | | | | | | | | | | | | |
| 5 | RES | I | Reset input pin When RESETB is “L”, initialization is executed. | | | | | | | | | | | | | | | |
| 6 | A0 | I | This is connected to the least significant bit of the normal MPU address bus, and it determines whether the data bits are data or a command . A0=”H”: Indicate that D0 to D7 are display data A0=”L”: Indicate that D0 to D7 are control data | | | | | | | | | | | | | | | |
| 7 | R/W | I | When connected to 80-family MPU: Write enable clock input pin. The data ON DB0~DB7 are latched at the rising edge of the /WR signal. When connected to 68-family MPU: RW = ”H”: read RW = “L”: write | | | | | | | | | | | | | | | |
| 8 | E | I | When connected to 80-family MPU: Read enable clock input pin. When /RD is “L”, DB0~DB7 are in an output status When connected to 68-family MPU: RW = ”H”: When E is “H”, DB0~DB7 are in an output status RW = “L”: The data on DB0~DB7 are latched at the falling edge of the E signal | | | | | | | | | | | | | | | |
| 9-16 | DB0-DB7 | I/O | 8-bit bi-directional data bus that is connected to the standard 8-bit microprocessor data bus. When the serial interface selected(PS=”L”) DB0~DB5: high impedance DB6: serial input clock (SCLK) DB7: serial input data (SID) When chip select is not active, DB0~DB7 may be high impedance. | | | | | | | | | | | | | | | |
| 17 | C86 | I | This is the MPU interface switch terminal C86 = “H”:6800 Series MPU interface C86 = “L”:8080 Series MPU interface | | | | | | | | | | | | | | | |
| 18 | P/S | I | This is the parallel data input/serial data input switch terminal P/S = “H”:Parallel data input P/S = “L”:Serial data input The following applies depending on the P/S status: <table border="1" style="margin-left: 20px;"> <thead> <tr> <th>P/S</th> <th>Data/Command</th> <th>Data</th> <th>Read/Write</th> <th>Serial Clock</th> </tr> </thead> <tbody> <tr> <td>“H”</td> <td>A0</td> <td>D0 to D7</td> <td>/RD, /WR</td> <td>-</td> </tr> <tr> <td>“L”</td> <td>A0</td> <td>SI (D7)</td> <td>Write only</td> <td>SCL (D6)</td> </tr> </tbody> </table> When P/S = “L”,fix D0~D5 pads to VDD or VSS level. /RD(E) and /WR (R/W) are fixed to either “H” or “L”.With seral data input ,RAM display data reading is not supported. | P/S | Data/Command | Data | Read/Write | Serial Clock | “H” | A0 | D0 to D7 | /RD, /WR | - | “L” | A0 | SI (D7) | Write only | SCL (D6) |
| P/S | Data/Command | Data | Read/Write | Serial Clock | | | | | | | | | | | | | | |
| “H” | A0 | D0 to D7 | /RD, /WR | - | | | | | | | | | | | | | | |
| “L” | A0 | SI (D7) | Write only | SCL (D6) | | | | | | | | | | | | | | |

PRELIMINARY

8. Contour Drawing & Block Diagram



| | | | | |
|---|--|-------------------------------|--|-----------------------------|
|  Crystalfontz America, Inc. <small>copyright © 2009 by www.crystalfontz.com/products/</small> | Part No.(s): CFXA12864U1-TFH | Scale: Not to scale | Drawing Number: CFXA12864U1_master | Hardware Rev.: vA |
| | | Units: Millimeters | Date: 2009/02/06 | Sheet: 1 of 1 |

PRELIMINARY

9. Fuction Description

Refer to IC NT7534 data sheet

PRELIMINARY

10. RELIABILITY

Content of Reliability Test (wide temperature, -20°C~70°C)

| Environmental Test | | | |
|---|--|--|-------------|
| Test Item | Content of Test | Test Condition | Note |
| High Temperature storage | Endurance test applying the high storage temperature for a long time. | 80°C 200hrs | 2 |
| Low Temperature storage | Endurance test applying the high storage temperature for a long time. | -30°C 200hrs | 1,2 |
| High Temperature Operation | Endurance test applying the electric stress (Voltage & Current) and the thermal stress to the element for a long time. | 70°C 200hrs | — |
| Low Temperature Operation | Endurance test applying the electric stress under low temperature for a long time. | -20°C 200hrs | 1 |
| High Temperature/ Humidity Operation | The module should be allowed to stand at 60°C, 90%RH max For 96hrs under no-load condition excluding the polarizer, Then taking it out and drying it at normal temperature. | 60°C, 90%RH 96hrs | 1,2 |
| Thermal shock resistance | The sample should be allowed stand the following 10 cycles of operation <div style="text-align: center;"> <p style="margin: 0;">-20°C 25°C 70°C</p> <p style="margin: 0;">30min 5min 30min</p> <p style="margin: 0;">1 cycle</p> </div> | -20°C/70°C 10 cycles | — |
| Vibration test | Endurance test applying the vibration during transportation and using. | Total fixed amplitude : 15mm Vibration Frequency : 10~55Hz One cycle 60 seconds to 3 directions of X,Y,Z for Each 15 minutes | 3 |
| Static electricity test | Endurance test applying the electric stress to the terminal. | VS=800V,RS=1.5kΩ CS=100pF 1 time | — |

Note1: No dew condensation to be observed.

Note2: The function test shall be conducted after 4 hours storage at the normal Temperature and humidity after remove from the test chamber.

Note3: Vibration test will be conducted to the product itself without putting it in a container.

PRELIMINARY

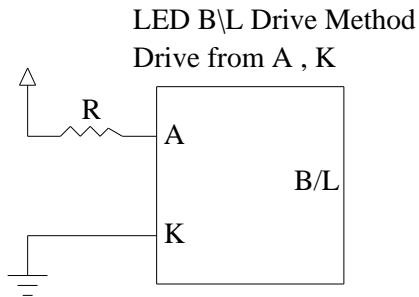
11. Backlight Information

Specification

| PARAMETER | SYMBOL | MIN | TYP | MAX | UNIT | TEST CONDITION |
|------------------------------------|------------------|------|-----|-----|-------------------|--|
| Supply Current | I _{LED} | 43.2 | 48 | 75 | mA | V= 3.5V |
| Supply Voltage | V | | | 5 | V | — |
| Reverse Voltage | V _R | 3.4 | 3.5 | 3.6 | V | — |
| Luminous Intensity | I _V | 120 | 150 | | CD/M ² | I _{LED} =48mA |
| LED Life Time (For Reference only) | — | — | 10K | — | Hr. | I _{LED} =48mA 25°C,50-60%RH, (Note 1) |
| Color | White | | | | | |

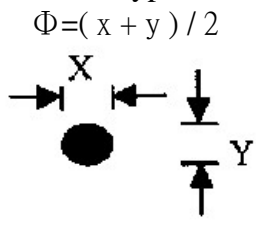
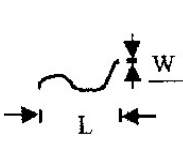
Note: The LED of B/L is drive by current only, drive voltage is for reference only.
drive voltage can make driving current under safety area (current between minimum and maximum).

Note1 : 10K hours is only an estimate for reference.

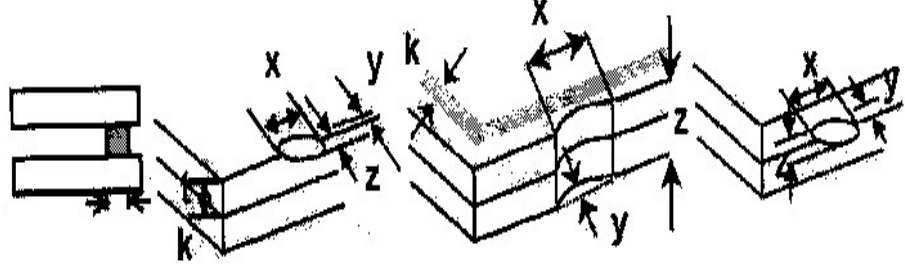
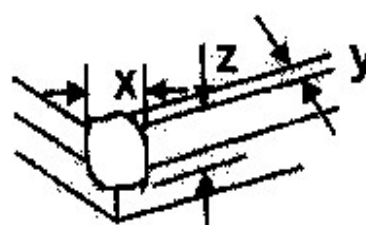


PRELIMINARY

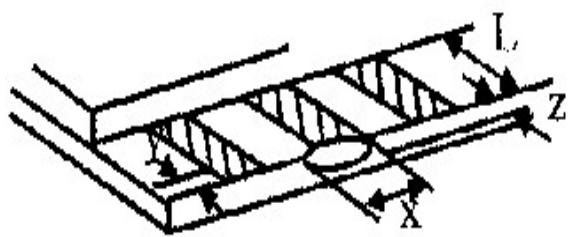
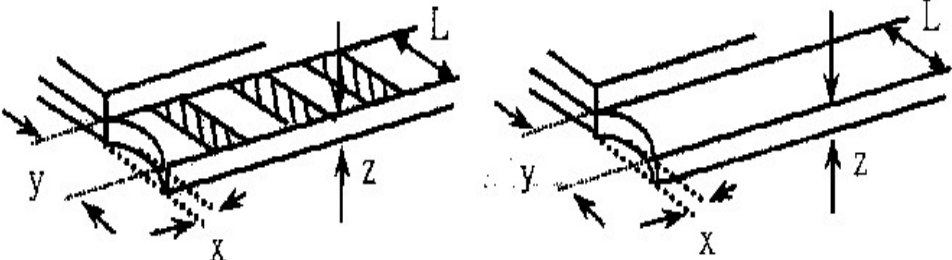
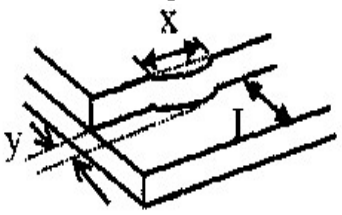
12. Inspection specification

| NO | Item | Criterion | AQL | | | | | | | | | | | | | | |
|-------------------------|---|--|-----------------|-----------------|------------------|-----------------|-------------------------|-----------------|-------------------------|----------------------|---------------|--------------|----------------------|-----|------------|---------------|-----|
| 01 | Electrical Testing | 1.1 Missing vertical, horizontal segment, segment contrast defect. 1.2 Missing character , dot or icon. 1.3 Display malfunction. 1.4 No function or no display. 1.5 Current consumption exceeds product specifications. 1.6 LCD viewing angle defect. 1.7 Mixed product types. 1.8 Contrast defect. | 0.65 | | | | | | | | | | | | | | |
| 02 | Black or white spots on LCD (display only) | 2.1 White and black spots on display $\leq 0.25\text{mm}$, no more than three white or black spots present. 2.2 Densely spaced: No more than two spots or lines within 3mm | 2.5 | | | | | | | | | | | | | | |
| 03 | LCD black spots, white spots, contamination (non-display) | 3.1 Round type : As following drawing $\Phi = (x + y) / 2$  <table border="1" style="margin-left: auto; margin-right: auto;"> <thead> <tr> <th>SIZE</th> <th>Acceptable Q TY</th> </tr> </thead> <tbody> <tr> <td>$\Phi \leq 0.10$</td> <td>Accept no dense</td> </tr> <tr> <td>$0.10 < \Phi \leq 0.20$</td> <td>2</td> </tr> <tr> <td>$0.20 < \Phi \leq 0.25$</td> <td>1</td> </tr> <tr> <td>$0.25 < \Phi$</td> <td>0</td> </tr> </tbody> </table> | SIZE | Acceptable Q TY | $\Phi \leq 0.10$ | Accept no dense | $0.10 < \Phi \leq 0.20$ | 2 | $0.20 < \Phi \leq 0.25$ | 1 | $0.25 < \Phi$ | 0 | 2.5 | | | | |
| | | SIZE | Acceptable Q TY | | | | | | | | | | | | | | |
| $\Phi \leq 0.10$ | Accept no dense | | | | | | | | | | | | | | | | |
| $0.10 < \Phi \leq 0.20$ | 2 | | | | | | | | | | | | | | | | |
| $0.20 < \Phi \leq 0.25$ | 1 | | | | | | | | | | | | | | | | |
| $0.25 < \Phi$ | 0 | | | | | | | | | | | | | | | | |
| | | 3.2 Line type : (As following drawing)  <table border="1" style="margin-left: auto; margin-right: auto;"> <thead> <tr> <th>Length</th> <th>Width</th> <th>Acceptable Q TY</th> </tr> </thead> <tbody> <tr> <td>---</td> <td>$W \leq 0.02$</td> <td>Accept no dense</td> </tr> <tr> <td>$L \leq 3.0$</td> <td>$0.02 < W \leq 0.03$</td> <td rowspan="2">2</td> </tr> <tr> <td>$L \leq 2.5$</td> <td>$0.03 < W \leq 0.05$</td> </tr> <tr> <td>---</td> <td>$0.05 < W$</td> <td>As round type</td> </tr> </tbody> </table> | Length | Width | Acceptable Q TY | --- | $W \leq 0.02$ | Accept no dense | $L \leq 3.0$ | $0.02 < W \leq 0.03$ | 2 | $L \leq 2.5$ | $0.03 < W \leq 0.05$ | --- | $0.05 < W$ | As round type | 2.5 |
| Length | Width | Acceptable Q TY | | | | | | | | | | | | | | | |
| --- | $W \leq 0.02$ | Accept no dense | | | | | | | | | | | | | | | |
| $L \leq 3.0$ | $0.02 < W \leq 0.03$ | 2 | | | | | | | | | | | | | | | |
| $L \leq 2.5$ | $0.03 < W \leq 0.05$ | | | | | | | | | | | | | | | | |
| --- | $0.05 < W$ | As round type | | | | | | | | | | | | | | | |
| 04 | Polarizer bubbles | If bubbles are visible, judge using black spot specifications, not easy to find, must check in specify direction. <table border="1" style="margin-left: auto; margin-right: auto;"> <thead> <tr> <th>Size Φ</th> <th>Acceptable Q TY</th> </tr> </thead> <tbody> <tr> <td>$\Phi \leq 0.20$</td> <td>Accept no dense</td> </tr> <tr> <td>$0.20 < \Phi \leq 0.50$</td> <td>3</td> </tr> <tr> <td>$0.50 < \Phi \leq 1.00$</td> <td>2</td> </tr> <tr> <td>$1.00 < \Phi$</td> <td>0</td> </tr> <tr> <td>Total Q TY</td> <td>3</td> </tr> </tbody> </table> | Size Φ | Acceptable Q TY | $\Phi \leq 0.20$ | Accept no dense | $0.20 < \Phi \leq 0.50$ | 3 | $0.50 < \Phi \leq 1.00$ | 2 | $1.00 < \Phi$ | 0 | Total Q TY | 3 | 2.5 | | |
| Size Φ | Acceptable Q TY | | | | | | | | | | | | | | | | |
| $\Phi \leq 0.20$ | Accept no dense | | | | | | | | | | | | | | | | |
| $0.20 < \Phi \leq 0.50$ | 3 | | | | | | | | | | | | | | | | |
| $0.50 < \Phi \leq 1.00$ | 2 | | | | | | | | | | | | | | | | |
| $1.00 < \Phi$ | 0 | | | | | | | | | | | | | | | | |
| Total Q TY | 3 | | | | | | | | | | | | | | | | |

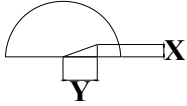
PRELIMINARY

| NO | Item | Criterion | AQL | | | | | | | | | | | | | | | | | | |
|--------------------|-----------------------|--|-------------------|---------------|----------------|---------------|-----------------------|---------------|--------------------|-----------------|---------------|-------------------|---------------|----------------|---------------|-----------------------|---------------|--------------------|-----------------|---------------|-----|
| 05 | Scratches | Follow NO.3 LCD black spots, white spots, contamination | | | | | | | | | | | | | | | | | | | |
| 06 | Chipped glass | <p>Symbols Define: x: Chip length y: Chip width z: Chip thickness k: Seal width t: Glass thickness a: LCD side length L: Electrode pad length:</p> <p>6.1 General glass chip : 6.1.1 Chip on panel surface and crack between panels:</p>  <table border="1" style="width: 100%; margin-top: 10px;"> <tr> <td style="width: 33%;">z: Chip thickness</td> <td style="width: 33%;">y: Chip width</td> <td style="width: 33%;">x: Chip length</td> </tr> <tr> <td>$Z \leq 1/2t$</td> <td>Not over viewing area</td> <td>$x \leq 1/8a$</td> </tr> <tr> <td>$1/2t < z \leq 2t$</td> <td>Not exceed 1/3k</td> <td>$x \leq 1/8a$</td> </tr> </table> <p>⊙ If there are 2 or more chips, x is total length of each chip.</p> <p>6.1.2 Corner crack:</p>  <table border="1" style="width: 100%; margin-top: 10px;"> <tr> <td style="width: 33%;">z: Chip thickness</td> <td style="width: 33%;">y: Chip width</td> <td style="width: 33%;">x: Chip length</td> </tr> <tr> <td>$Z \leq 1/2t$</td> <td>Not over viewing area</td> <td>$x \leq 1/8a$</td> </tr> <tr> <td>$1/2t < z \leq 2t$</td> <td>Not exceed 1/3k</td> <td>$x \leq 1/8a$</td> </tr> </table> <p>⊙ If there are 2 or more chips, x is the total length of each chip.</p> | z: Chip thickness | y: Chip width | x: Chip length | $Z \leq 1/2t$ | Not over viewing area | $x \leq 1/8a$ | $1/2t < z \leq 2t$ | Not exceed 1/3k | $x \leq 1/8a$ | z: Chip thickness | y: Chip width | x: Chip length | $Z \leq 1/2t$ | Not over viewing area | $x \leq 1/8a$ | $1/2t < z \leq 2t$ | Not exceed 1/3k | $x \leq 1/8a$ | 2.5 |
| z: Chip thickness | y: Chip width | x: Chip length | | | | | | | | | | | | | | | | | | | |
| $Z \leq 1/2t$ | Not over viewing area | $x \leq 1/8a$ | | | | | | | | | | | | | | | | | | | |
| $1/2t < z \leq 2t$ | Not exceed 1/3k | $x \leq 1/8a$ | | | | | | | | | | | | | | | | | | | |
| z: Chip thickness | y: Chip width | x: Chip length | | | | | | | | | | | | | | | | | | | |
| $Z \leq 1/2t$ | Not over viewing area | $x \leq 1/8a$ | | | | | | | | | | | | | | | | | | | |
| $1/2t < z \leq 2t$ | Not exceed 1/3k | $x \leq 1/8a$ | | | | | | | | | | | | | | | | | | | |

PRELIMINARY

| NO | Item | Criterion | AQL | | | | | | |
|--------------------------------------|----------------|--|----------------|-------------------|-------------------|-----------------------|---------------|----------------|--|
| 06 | Glass crack | <p>Symbols :</p> <p>x: Chip length y: Chip width z: Chip thickness k: Seal width t: Glass thickness a: LCD side length L: Electrode pad length</p> <p>6.2 Protrusion over terminal :</p> <p>6.2.1 Chip on electrode pad :</p> | | | | | | | |
| | |  | | | | | | | |
| | | <table border="1" style="margin-left: auto; margin-right: auto;"> <tr> <td style="padding: 5px;">y: Chip width</td> <td style="padding: 5px;">x: Chip length</td> <td style="padding: 5px;">z: Chip thickness</td> </tr> <tr> <td style="padding: 5px;">$y \leq 0.5\text{mm}$</td> <td style="padding: 5px;">$x \leq 1/8a$</td> <td style="padding: 5px;">$0 < z \leq t$</td> </tr> </table> | y: Chip width | x: Chip length | z: Chip thickness | $y \leq 0.5\text{mm}$ | $x \leq 1/8a$ | $0 < z \leq t$ | |
| | | y: Chip width | x: Chip length | z: Chip thickness | | | | | |
| $y \leq 0.5\text{mm}$ | $x \leq 1/8a$ | $0 < z \leq t$ | | | | | | | |
| <p>6.2.2 Non-conductive portion:</p> | | | | | | | | | |
| | |  | 2.5 | | | | | | |
| | | <table border="1" style="margin-left: auto; margin-right: auto;"> <tr> <td style="padding: 5px;">y: Chip width</td> <td style="padding: 5px;">x: Chip length</td> <td style="padding: 5px;">z: Chip thickness</td> </tr> <tr> <td style="padding: 5px;">$y \leq L$</td> <td style="padding: 5px;">$x \leq 1/8a$</td> <td style="padding: 5px;">$0 < z \leq t$</td> </tr> </table> | y: Chip width | x: Chip length | z: Chip thickness | $y \leq L$ | $x \leq 1/8a$ | $0 < z \leq t$ | |
| y: Chip width | x: Chip length | z: Chip thickness | | | | | | | |
| $y \leq L$ | $x \leq 1/8a$ | $0 < z \leq t$ | | | | | | | |
| | | <p>⊙If the chipped area touches the ITO terminal, over 2/3 of the ITO must remain and be inspected according to electrode terminal specifications.</p> <p>⊙If the product will be heat sealed by the customer, the alignment mark not be damaged.</p> <p>6.2.3 Substrate protuberance and internal crack.</p> | | | | | | | |
| | |  <table border="1" style="margin-left: auto; margin-right: auto; margin-top: 10px;"> <tr> <td style="padding: 5px;">y: width</td> <td style="padding: 5px;">x: length</td> </tr> <tr> <td style="padding: 5px;">$y \leq 1/3L$</td> <td style="padding: 5px;">$x \leq a$</td> </tr> </table> | y: width | x: length | $y \leq 1/3L$ | $x \leq a$ | | | |
| y: width | x: length | | | | | | | | |
| $y \leq 1/3L$ | $x \leq a$ | | | | | | | | |

PRELIMINARY

| NO | Item | Criterion | AQL |
|----|--------------------|--|--|
| 07 | Cracked glass | The LCD with extensive crack is not acceptable. | 2.5 |
| 08 | Backlight elements | 8.1 Illumination source flickers when lit. 8.2 Spots or scratched that appear when lit must be judged. Using LCD spot, lines and contamination standards. 8.3 Backlight doesn't light or color wrong. | 0.65 2.5 0.65 |
| 09 | Bezel | 9.1 Bezel may not have rust, be deformed or have fingerprints, stains or other contamination. 9.2 Bezel must comply with job specifications. | 2.5 0.65 |
| 10 | PCB、COB | 10.1 COB seal may not have pinholes larger than 0.2mm or contamination. 10.2 COB seal surface may not have pinholes through to the IC. 10.3 The height of the COB should not exceed the height indicated in the assembly diagram. 10.4 There may not be more than 2mm of sealant outside the seal area on the PCB. And there should be no more than three places. 10.5 No oxidation or contamination PCB terminals. 10.6 Parts on PCB must be the same as on the production characteristic chart. There should be no wrong parts, missing parts or excess parts. 10.7 The jumper on the PCB should conform to the product characteristic chart. 10.8 If solder gets on bezel tab pads, LED pad, zebra pad or screw hold pad, make sure it is smoothed down. 10.9 The Scraping testing standard for Copper Coating of PCB  $X * Y \leq 2\text{mm}^2$ | 2.5 2.5 0.65 2.5 2.5 0.65 0.65 2.5 2.5 |
| 11 | Soldering | 11.1 No un-melted solder paste may be present on the PCB. 11.2 No cold solder joints, missing solder connections, oxidation or icicle. 11.3 No residue or solder balls on PCB. 11.4 No short circuits in components on PCB. | 2.5 2.5 2.5 0.65 |

PRELIMINARY

| NO | Item | Criterion | AQL |
|----|--------------------|--|------|
| 12 | General appearance | 12.1 No oxidation, contamination, curves or, bends on interface Pin (OLB) of TCP. | 2.5 |
| | | 12.2 No cracks on interface pin (OLB) of TCP. | 0.65 |
| | | 12.3 No contamination, solder residue or solder balls on product. | 2.5 |
| | | 12.4 The IC on the TCP may not be damaged, circuits. | 2.5 |
| | | 12.5 The uppermost edge of the protective strip on the interface pin must be present or look as if it causes the interface pin to sever. | 2.5 |
| | | 12.6 The residual rosin or tin oil of soldering (component or chip component) is not burned into brown or black color. | 2.5 |
| | | 12.7 Sealant on top of the ITO circuit has not hardened. | 0.65 |
| | | 12.8 Pin type must match type in specification sheet. | 0.65 |
| | | 12.9 LCD pin loose or missing pins. | 0.65 |
| | | 12.10 Product packaging must the same as specified on packaging specification sheet. | 0.65 |
| | | 12.11 Product dimension and structure must conform to product specification sheet. | |

PRELIMINARY

13. Material List of Components for RoHS

1. Crystalfontz America, Inc. hereby declares that all of or part of products, including, but not limited to, the LCM, accessories or packages, manufactured and/or delivered to your company (including your subsidiaries and affiliated company) directly or indirectly by our company (including our subsidiaries or affiliated companies) do not intentionally contain any of the substances listed in all applicable EU directives and regulations, including the following substances.

Exhibit A : The Harmful Material List

| Material | (Cd) | (Pb) | (Hg) | (Cr6+) | PBBs | PBDEs |
|--|---------|----------|----------|----------|----------|----------|
| Limited Value | 100 ppm | 1000 ppm | 1000 ppm | 1000 ppm | 1000 ppm | 1000 ppm |
| Above limited value is set up according to RoHS. | | | | | | |

2.Process for RoHS requirement :

- (1) Use the Sn/Ag/Cu soldering surface ; the surface of Pb-free solder is rougher than we used before.
- (2) Heat-resistance temp. :
Reflow : 250°C,30 seconds Max. ;
Connector soldering wave or hand soldering : 320°C, 10 seconds max.
- (3) Temp. curve of reflow, max. Temp. : 235±5°C ;
Recommended customer's soldering temp. of connector : 280°C, 3 seconds.