

# ***Crystalfontz America, Inc.***

## **LCD MODULE SPECIFICATIONS**

|                           |   |
|---------------------------|---|
| Crystalfontz Model Number | <b>CFAG12864E-WGH-TN</b>                      |
| Hardware Version          |   |
| Data Sheet Version:       | <b><i>Preliminary Draft</i></b> November 2006 |
| Product Pages             |   |
| Customer Name             |   |

### **Crystalfontz America, Inc.**

12412 East Saltese Avenue  
Spokane Valley, WA 99216-0357

Phone: (888) 206-9720

Fax: (509) 892-1203

Email: [techinfo@crystalfontz.com](mailto:techinfo@crystalfontz.com)

URL: [www.crystalfontz.com](http://www.crystalfontz.com)

# **Contents**

1. Module Classification Information
2. Precautions
3. General Specifications
4. Absolute Maximum Ratings
5. Electrical Characteristics
6. Optical Characteristics
7. Interface Pin Function
8. Contour Drawing & Block Diagram
9. Function Description
10. Instruction Table
11. Timing Characteristics
12. Reliability
13. Backlight Information
14. Inspection Specifications

# 1. Module Classification Information

□□ **CFA G 1 2 8 6 4 E** □ **W G H** □ **T\***

□ □□ □ □ □ □ □ □ □

|   |   |   |  |
|---|---|---|--|
| ① | Brand: CRYSTALFONTZ AMERICA, INCORPORATED                           |   |  |
| ② | Display Type: H→Character Type, <b>G→Graphic Type</b> , X→TAB       |   |  |
| ③ | Display's Logical Dimensions: <b>128</b> pixels by <b>64</b> pixels |   |  |
| ④ | Model Serial No. <b>E</b>   |   |  |
| ⑤ | Backlight Type:   | N→Without backlight<br>B→EL, Blue green<br>D→EL, Green<br><b>W→EL, White</b><br>F→CCFL, White<br>Y→LED, Yellow Green  | A→LED, Amber<br>R→LED, Red<br>O→LED, Orange<br>G→LED, Green  |
| ⑥ | LCD Mode:   | B→TN Positive, Gray<br>N→TN Negative,<br><b>G→STN Positive, Gray</b><br>Y→STN Positive, Yellow Green<br>M→STN Negative, Blue<br>F→FSTN Positive                         | T→FSTN Negative  |
| ⑦ | LCD Polarizer Type/<br>Temperature range/<br>View direction         | A→Reflective, N.T, 6:00<br>D→Reflective, N.T, 12:00<br>G→Reflective, W. T, 6:00<br>J→Reflective, W. T, 12:00<br>B→Transflective, N.T,6:00<br>E→Transflective, N.T.12:00 | <b>H→Transflective, W.T,6:00</b><br>K→Transflective, W.T,12:00<br>C→Transmissive, N.T,6:00<br>F→Transmissive, N.T,12:00<br>I→Transmissive, W. T, 6:00<br>L→Transmissive, W.T,12:00 |
| ⑧ | Special Code:   | <b>T→Temperature compensation on board</b><br><b>*→ May have additional manufacturer's codes at this location</b>   |  |

## **2. Precautions**

1. Avoid applying excessive shocks to the module or making any alterations or modifications to it.
2. Don't make extra holes on the printed circuit board, modify its shape or change the components of LCD Module.
3. Don't disassemble the LCM.
4. Don't operate it above the absolute maximum rating.
5. Don't drop, bend or twist LCM.
6. Solder only to the I/O terminals.
7. Please store in anti-static electricity container and clean environment.

## **3. General Specifications**

| <b>ITEM</b>      | <b>SPECIFICATION</b>             | <b>UNIT</b> |
|------------------|----------------------------------|-------------|
| Number of dots   | 128 ×64 + 4 Icon                 | dots        |
| Module dimension | 54.0(W) ×50.0(H) ×7.5 max(T)     | mm          |
| View area        | 43.5(W) ×29.0(H)                 | mm          |
| Active area      | 40.92(W) ×26.92(H)               | mm          |
| Dot size         | 0.28(W) ×0.35(H)                 | mm          |
| Dot pitch        | 0.32(W) ×0.39(H)                 | mm          |
| LCD type         | STN Positive, Gray Transflective |             |
| View direction   | 6 o'clock                        |             |
| Backlight        | EL (white)                       |             |

## 4. Absolute Maximum Ratings

| ITEM                     | SYMBOL   | MINIMUM | TYP. | MAXIMUM | UNIT |
|--------------------------|----------|---------|------|---------|------|
| Operating Temperature    | TOP      | -20°C   |      | +70°C   | °C   |
| Storage Temperature      | TST      | -30°C   |      | +80°C   | °C   |
| Input Voltage            | VI       | 0       |      | VDD     | V    |
| Supply Voltage For Logic | VDD      | 0       |      | 6.7     | V    |
| Supply Voltage For LCD   | VDD-VLCD | 0       |      | 17      | V    |

## 5. Electrical Characteristics

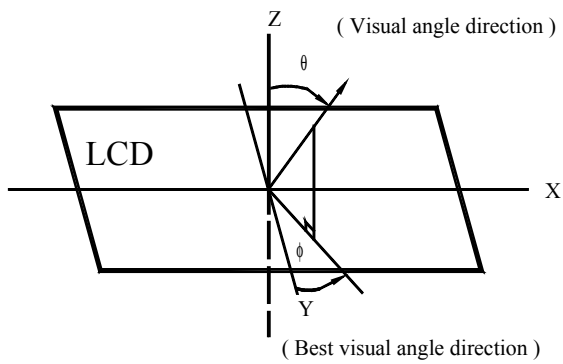
| ITEM                     | SYMBOL          | CONDITION | MIN. | TYP. | MAX. | UNIT |
|--------------------------|-----------------|-----------|------|------|------|------|
| Supply Voltage For Logic | VDD-VSS         | □         | 4.5  | 5.0  | 5.5  | V    |
| Supply Voltage For LCD   | VDD-V0          | Ta=-20°C  |      |      | 9.9  | V    |
|                          |                 | Ta=25°C   |      | 8.4  |      | V    |
|                          |                 | Ta=+70°C  | 6.8  |      |      | V    |
| Input High Vol           | VIH             |           | 2.0  |      | VDD  | V    |
| Input Low Vol            | VIL             |           | 0    |      | 0.8  | V    |
| Output High Vol          | VOH             |           | 2.4  |      | VDD  | V    |
| Output Low Vol.          | VOL             |           | 0    |      | 0.4  | V    |
| Power Supply Current     | IDD<br>(EL OFF) |           |      | 10.0 |      | mA   |
| Power Supply Current     | IDD<br>(EL ON ) |           |      | 40.0 |      | mA   |

# 6. Optical Characteristics

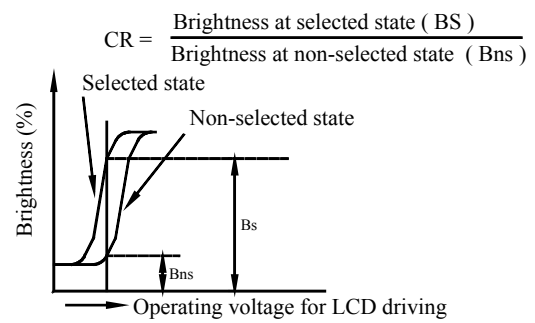
| ITEM           | SYMBOL     | CONDITION   | MINIMUM | TYP | MAXIMUM | UNIT      |
|----------------|------------|-------------|---------|-----|---------|-----------|
| View Angle     | (H) $\phi$ | CR $\geq$ 2 | -30     |     | 30      | deg.      |
| Contrast Ratio | CR         | $\square$   |         | 3   |         | $\square$ |
| Response Time  | T fall     | $\square$   |         | 265 | 400     | ms        |

## Optical Definitions

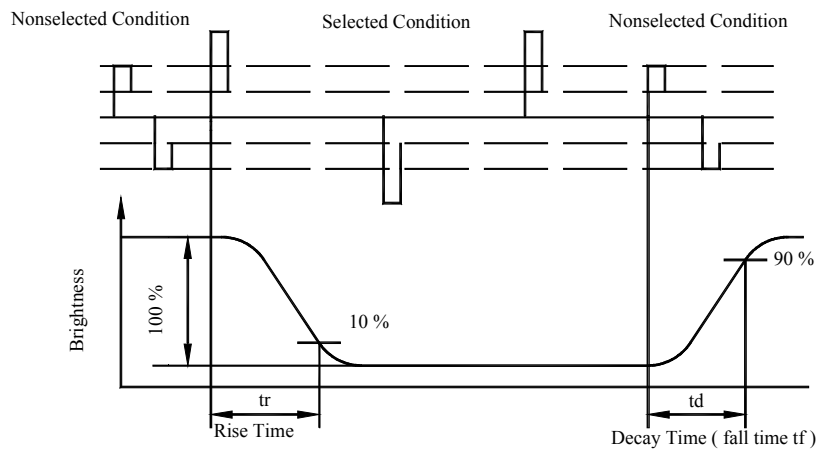
### View Angles



### Contrast Ratio



### Response Time



## 7. Interface Pin Function

| Pin | Symbol | Level                    | Description                                 |
|-----|--------|--------------------------|---|
| 1   | GND    | 0V                       | Ground                                      |
| 2   | VDD    | 2.8~5.5V                 | Supply voltage for logic                    |
| 3   | VO     | (Variable)               | Operating voltage for LCD                   |
| 4   | D/I    | H/L                      | H: Data , L: Instruction                    |
| 5   | R/W    | H/L                      | H: Read(MPU←Module) , L :Write(MPU→Module)  |
| 6   | E      | H                        | Enable signal                               |
| 7   | DB0    | H/L                      | Data bus line                               |
| 8   | DB1    | H/L                      | Data bus line                               |
| 9   | DB2    | H/L                      | Data bus line                               |
| 10  | DB3    | H/L                      | Data bus line                               |
| 11  | DB4    | H/L                      | Data bus line                               |
| 12  | DB5    | H/L                      | Data bus line                               |
| 13  | DB6    | H/L                      | Data bus line                               |
| 14  | DB7    | H/L                      | Data bus line                               |
| 15  | CS1    | H                        | Chip Enable (Select Column 1 ~ Column 64)   |
| 16  | CS2    | H                        | Chip Enable (Select Column 65 ~ Column 128) |
| 17  | RST    | L                        | Reset signal                                |
| 18  | VEE    |                          | Negative Voltage                            |
| 19  | BL+    | <input type="checkbox"/> | Enable ( on/off ) for EL B/L                |
| 20  | BL-    | <input type="checkbox"/> | No connection                               |



## 9. Function Description

| RS | R/W | DB7 | DB6 | DB5 | DB4 | DB3 | DB2 | DB1 | DB0 |
|----|-----|-----|-----|-----|-----|-----|-----|-----|-----|
| 0  | 0   | 0   | 0   | 1   | 1   | 1   | 1   | 1   | D   |

The display data appears when D is 1 and disappears when D is 0. Though the data is not on the screen with D=0, it remains in the display data RAM. Therefore, you can make it appear by changing D=0 into D=1.

### SET ADDRESS (Y ADDRESS)

| RS | R/W | DB7 | DB6 | DB5 | DB4 | DB3 | DB2 | DB1 | DB0 |
|----|-----|-----|-----|-----|-----|-----|-----|-----|-----|
| 0  | 0   | 0   | 1   | AC5 | AC4 | AC3 | AC2 | AC1 | AC0 |

Y address (AC0-AC5) of the display data RAM is set in the Y address counter. An address is set by instruction and increased by 1 automatically by read or write operations of display data.

### SET PAGE (X ADDRESS)

| RS | R/W | DB7 | DB6 | DB5 | DB4 | DB3 | DB2 | DB1 | DB0 |
|----|-----|-----|-----|-----|-----|-----|-----|-----|-----|
| 0  | 0   | 1   | 0   | 1   | 1   | 1   | AC2 | AC1 | AC0 |

X address (AC0-AC2) of the display data RAM is set in the X address register. Writing or reading to or from MPU is executed in this specified page until the next page is set.

### DISPLAY START LINE (Z ADDRESS)

| RS | R/W | DB7 | DB6 | DB5 | DB4 | DB3 | DB2 | DB1 | DB0 |
|----|-----|-----|-----|-----|-----|-----|-----|-----|-----|
| 0  | 0   | 1   | 1   | AC5 | AC4 | AC3 | AC2 | AC1 | AC0 |

Z address (AC0-AC5) of the display data RAM is set in the display start line register and displayed at the top of the screen. When the display duty cycle is 1/64 or others (1/32-1/64), the data of total line number of LCD screen, from the line specified by display start line instruction, is displayed.

### STATUS READ

| RS | R/W | DB7  | DB6 | DB5    | DB4   | DB3 | DB2 | DB1 | DB0 |
|----|-----|------|-----|--------|-------|-----|-----|-----|-----|
| 0  | 1   | BUSY | 0   | ON/OFF | RESET | 0   | 0   | 0   | 0   |

## **BUSY**

When BUSY is 1, the Chip is executing internal operation and no instructions are accepted.

When BUSY is 0, the Chip is ready to accept any instructions.

## **ON/OFF**

When ON/OFF is 1, the display is OFF.

When ON/OFF is 0, the display is ON.

## **RESET**

When RESET is 1, the system is being initialized.

In this condition, no instructions except status read can be accepted.

When RESET is 0, initializing has finished and the system is in usual operation condition.

## **WRITE DISPLAY DATA**

| <b>RS</b> | <b>R/W</b> | <b>DB7</b> | <b>DB6</b> | <b>DB5</b> | <b>DB4</b> | <b>DB3</b> | <b>DB2</b> | <b>DB1</b> | <b>DB0</b> |
|-----------|------------|------------|------------|------------|------------|------------|------------|------------|------------|
| 1         | 0          | D7         | D6         | D5         | D4         | D3         | D2         | D1         | D0         |

Writes data (D0-D7) into the display data RAM. After writing instruction, Y address is increased by 1 automatically.

## **READ DISPLAY DATA**

| <b>RS</b> | <b>R/W</b> | <b>DB7</b> | <b>DB6</b> | <b>DB5</b> | <b>DB4</b> | <b>DB3</b> | <b>DB2</b> | <b>DB1</b> | <b>DB0</b> |
|-----------|------------|------------|------------|------------|------------|------------|------------|------------|------------|
| 1         | 1          | D7         | D6         | D5         | D4         | D3         | D2         | D1         | D0         |

Reads data (D0-D7) from the display data RAM. After reading instruction, Y address is increased by 1 automatically.

# 10. Display Control Instruction

The display control instructions control the internal state of the NT7108. Instruction is received from MPU to NT7108 for the display control. The following table shows various instructions.

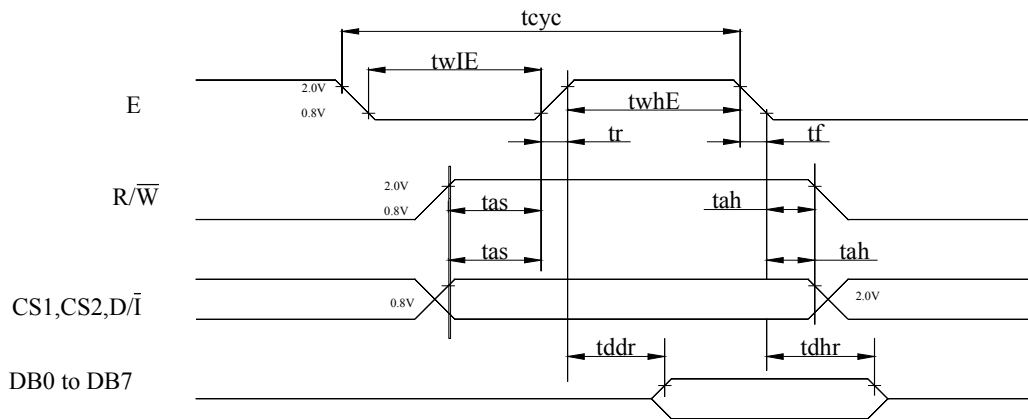
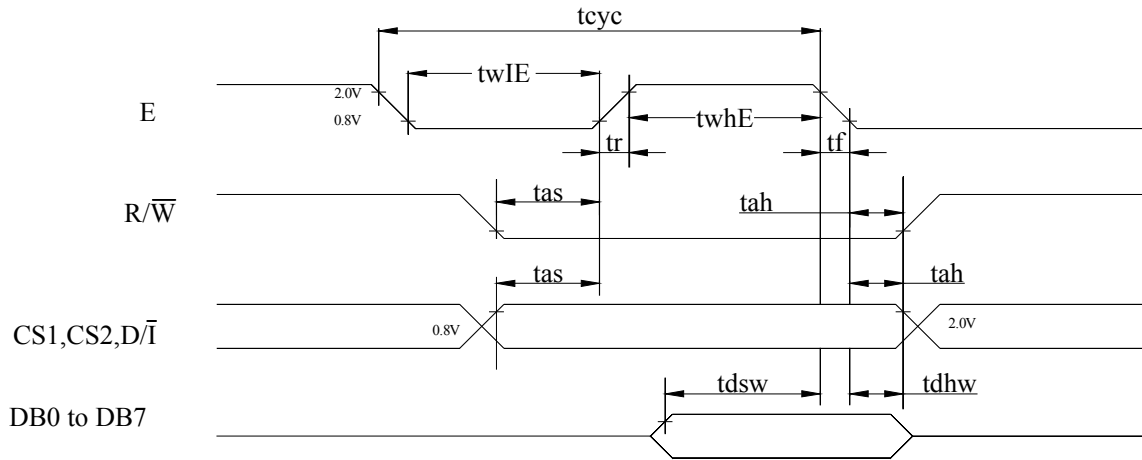
| Instruction                    | RS | R/W | DB7        | DB6 | DB5                       | DB4   | DB3 | DB2        | DB1 | DB0 | Function  |   |
|--------------------------------|----|-----|------------|-----|---------------------------|-------|-----|------------|-----|-----|---|---|
| Display on/off                 | L  | L   | L          | L   | H                         | H     | H   | H          | H   | L/H | Controls the display on or off. Internal status and display RAM data is not affected.<br>L:OFF, H:ON                      |   |
| Set address (Y address)        | L  | L   | L          | H   | Y address (0-63)          |       |     |            |     |     | Sets the Y address in the Y address counter.  |   |
| Set page (X address)           | L  | L   | H          | L   | H                         | H     | H   | Page (0-7) |     |     | Sets the X address at the X address register.   |   |
| Display Start line (Z address) | L  | L   | H          | H   | Display start line (0-63) |       |     |            |     |     | Indicates the display data RAM displayed at the top of the screen.  |   |
| Status read                    | L  | H   | Busy       | L   | On/Off                    | Reset | L   | L          | L   | L   | Read status.<br>BUSY L: Ready<br>H: In operation<br>ON/OFF L: Display ON<br>H: Display OFF<br>RESET L: Normal<br>H: Reset |   |
| Write display data             | H  | L   | Write data |     |                           |       |     |            |     |     |   | Writes data (DB0: 7) into display data RAM. After writing instruction, Y address is increased by 1 automatically. |
| Read display data              | H  | H   | Read data  |     |                           |       |     |            |     |     |   | Reads data (DB0: 7) from display data RAM to the data bus.  |

# 11. Timing Characteristics

## MPU Interface

| Characteristic         | Symbol | Min  | Typ | Max | Unit |
|------------------------|--------|------|-----|-----|------|
| E cycle                | tcyc   | 1000 |     |     | ns   |
| E high level width     | twhE   | 450  |     |     | ns   |
| E low level width      | twlE   | 450  |     |     | ns   |
| E rise time            | tr     |      |     | 25  | ns   |
| E fall time            | tf     |      |     | 25  | ns   |
| Address set-up time    | tas    | 140  |     |     | ns   |
| Address hold time      | tah    | 10   |     |     | ns   |
| Data set-up time       | tdsw   | 200  |     |     | ns   |
| Data delay time        | tddr   |      |     | 320 | ns   |
| Data hold time (write) | tdhw   | 10   |     |     | ns   |
| Data hold time (read)  | tdhr   | 20   |     |     | ns   |

### MPU Write Timing



### MPU Read Timing

# 12. RELIABILITY

## Content of Reliability Test (wide temperature, -20~70℃)

| Environmental Test                      |   |  |      |
|---|---|--|------|
| Test Item                               | Content of Test   | Test Condition   | Note |
| High Temperature storage                | Endurance test applying the high storage temperature for a long time.   | 80°C<br>200hrs   | 2    |
| Low Temperature storage                 | Endurance test applying the high storage temperature for a long time.   | -30°C<br>200hrs  | 1,2  |
| High Temperature Operation              | Endurance test applying the electric stress (Voltage & Current) and the thermal stress to the element for a long time.  | 70°C<br>200hrs   | —    |
| Low Temperature Operation               | Endurance test applying the electric stress under low temperature for a long time.  | -20°C<br>200hrs  | 1    |
| High Temperature/<br>Humidity Operation | The module should be allowed to stand at 60℃,90%RH max<br>For 96hrs under no-load condition excluding the polarizer,<br>Then taking it out and drying it at normal temperature. | 60°C,90%RH<br>96hrs  | 1,2  |
| Thermal shock resistance                | The sample should be allowed stand the following 10 cycles of operation<br>-20℃ 25℃ 70℃<br>30min 5min 30min<br>1 cycle  | -20°C/70°C<br>10 cycles  | —    |
| Vibration test                          | Endurance test applying the vibration during transportation and using.  | Total fixed amplitude :<br>1.5mm<br>Vibration Frequency :<br>10~55Hz<br>One cycle 60 seconds<br>to 3 directions of X,Y,Z<br>for Each 15<br>minutes | 3    |
| Static electricity test                 | Endurance test applying the electric stress to the terminal.  | VS=800V,RS=1.5kΩ<br>CS=100pF<br>1 time   | —    |

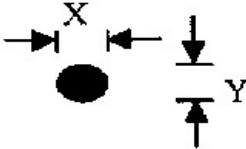
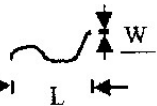
### Reliability Test Notes

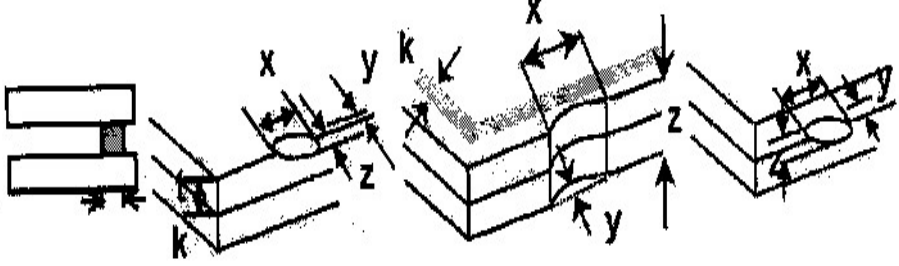
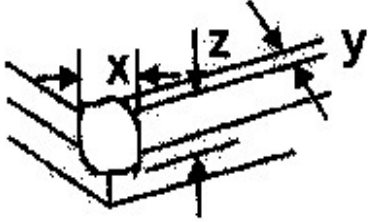
1. No dew condensation to be observed.
2. The function test shall be conducted after 4 hours storage at the normal
3. Temperature and humidity after remove from the test chamber.
4. Vibration test will be conducted to the product itself without putting it in a container.

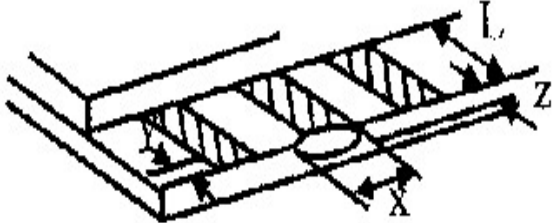
## 13. Backlight Information

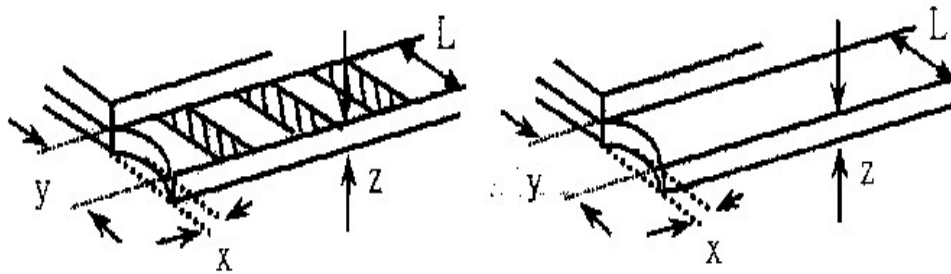
| PARAMETER         | SYMBOL | MIN   | TYP   | MAX  | UNIT  | TEST CONDITION      |
|-------------------|--------|-------|-------|------|-------|---------------------|
| Drive Voltage     | Vmax   | 75    | —     | 85   | Vrms  | 25°C                |
| Drive Wave        | Fmax   | 300   | —     | 1000 | Hz    | 25°C                |
| Brightness        |        | 25    | □     | □    | cd/m2 | 75~85Vrms/300~400Hz |
| Power Consumption |        | □     | 31.5  | □    | mW    | 75~85Vrms/300~400Hz |
| Chromatism        | X      | □     | 0.330 | □    | □     | 75~85Vrms/300~400Hz |
|                   | Y      | □     | 0.365 | □    | □     | 75~85Vrms/300~400Hz |
| Life time         |        | 5000  |       |      | hour  | 75~85Vrms/300~400Hz |
| Color             |        | White |       |      | □     | □                   |

# 14. Inspection Specifications

| NO   | Item  | Criterion  | AQL             |                 |                     |                 |                                  |                               |                                  |                 |                               |     |                  |               |     |
|--|---|--|-----------------|-----------------|---------------------|-----------------|----------------------------------|-------------------------------|----------------------------------|-----------------|-------------------------------|-----|------------------|---------------|-----|
| 01   | Electrical Testing  | Missing vertical, horizontal segment, segment contrast defect.<br>Missing character , dot or icon.<br>Display malfunction.<br>No function or no display.<br>Current consumption exceeds product specifications.<br>LCD viewing angle defect.<br>Mixed product types.<br>Contrast defect.   | 0.65            |                 |                     |                 |                                  |                               |                                  |                 |                               |     |                  |               |     |
| 02   | Black or white spots on LCD (display only)                | 2.1 White and black spots on display $\square 0.25\text{mm}$ , no more than three white or black spots present.<br>2.2 Densely spaced: No more than two spots or lines within 3mm  | 2.5             |                 |                     |                 |                                  |                               |                                  |                 |                               |     |                  |               |     |
| 03   | LCD black spots, white spots, contamination (non-display) | <table border="1"> <thead> <tr> <th>SIZE</th> <th>Acceptable Q TY</th> </tr> </thead> <tbody> <tr> <td><math>\Phi \square 0.10</math></td> <td>Accept no dense</td> </tr> <tr> <td><math>0.10 \square \Phi \square 0.20</math></td> <td>2</td> </tr> <tr> <td><math>0.20 \square \Phi \square 0.25</math></td> <td>1</td> </tr> <tr> <td><math>0.25 \square \Phi</math></td> <td>0</td> </tr> </tbody> </table> <p>3.1 Round type : As following drawing<br/> <math>\Phi = (x + y) / 2</math></p>                  | SIZE            | Acceptable Q TY | $\Phi \square 0.10$ | Accept no dense | $0.10 \square \Phi \square 0.20$ | 2                             | $0.20 \square \Phi \square 0.25$ | 1               | $0.25 \square \Phi$           | 0   | 2.5              |               |     |
|  |   | SIZE   | Acceptable Q TY |                 |                     |                 |                                  |                               |                                  |                 |                               |     |                  |               |     |
| $\Phi \square 0.10$  | Accept no dense   |  |                 |                 |                     |                 |                                  |                               |                                  |                 |                               |     |                  |               |     |
| $0.10 \square \Phi \square 0.20$   | 2   |  |                 |                 |                     |                 |                                  |                               |                                  |                 |                               |     |                  |               |     |
| $0.20 \square \Phi \square 0.25$   | 1   |  |                 |                 |                     |                 |                                  |                               |                                  |                 |                               |     |                  |               |     |
| $0.25 \square \Phi$  | 0   |  |                 |                 |                     |                 |                                  |                               |                                  |                 |                               |     |                  |               |     |
| <p>3.2 Line type : (As following drawing)</p> <table border="1"> <thead> <tr> <th>Length</th> <th>Width</th> <th>Acceptable Q TY</th> </tr> </thead> <tbody> <tr> <td>---</td> <td><math>W \square 0.02</math></td> <td>Accept no dense</td> </tr> <tr> <td><math>L \square 3.0</math></td> <td><math>0.02 \square W \square 0.03</math></td> <td rowspan="2">2</td> </tr> <tr> <td><math>L \square 2.5</math></td> <td><math>0.03 \square W \square 0.05</math></td> </tr> <tr> <td>---</td> <td><math>0.05 \square W</math></td> <td>As round type</td> </tr> </tbody> </table>  | Length  | Width  | Acceptable Q TY | ---             | $W \square 0.02$    | Accept no dense | $L \square 3.0$                  | $0.02 \square W \square 0.03$ | 2                                | $L \square 2.5$ | $0.03 \square W \square 0.05$ | --- | $0.05 \square W$ | As round type | 2.5 |
| Length   | Width   | Acceptable Q TY  |                 |                 |                     |                 |                                  |                               |                                  |                 |                               |     |                  |               |     |
| ---  | $W \square 0.02$  | Accept no dense  |                 |                 |                     |                 |                                  |                               |                                  |                 |                               |     |                  |               |     |
| $L \square 3.0$  | $0.02 \square W \square 0.03$                             | 2  |                 |                 |                     |                 |                                  |                               |                                  |                 |                               |     |                  |               |     |
| $L \square 2.5$  | $0.03 \square W \square 0.05$                             |  |                 |                 |                     |                 |                                  |                               |                                  |                 |                               |     |                  |               |     |
| ---  | $0.05 \square W$  | As round type  |                 |                 |                     |                 |                                  |                               |                                  |                 |                               |     |                  |               |     |
| 04   | Polarizer bubbles   | <table border="1"> <thead> <tr> <th>Size <math>\Phi</math></th> <th>Acceptable Q TY</th> </tr> </thead> <tbody> <tr> <td><math>\Phi \square 0.20</math></td> <td>Accept no dense</td> </tr> <tr> <td><math>0.20 \square \Phi \square 0.50</math></td> <td>3</td> </tr> <tr> <td><math>0.50 \square \Phi \square 1.00</math></td> <td>2</td> </tr> <tr> <td><math>1.00 \square \Phi</math></td> <td>0</td> </tr> <tr> <td>Total Q TY</td> <td>3</td> </tr> </tbody> </table> <p>If bubbles are visible, judge using black spot specifications, not easy to find, must check in specify direction.</p> | Size $\Phi$     | Acceptable Q TY | $\Phi \square 0.20$ | Accept no dense | $0.20 \square \Phi \square 0.50$ | 3                             | $0.50 \square \Phi \square 1.00$ | 2               | $1.00 \square \Phi$           | 0   | Total Q TY       | 3             | 2.5 |
| Size $\Phi$  | Acceptable Q TY   |  |                 |                 |                     |                 |                                  |                               |                                  |                 |                               |     |                  |               |     |
| $\Phi \square 0.20$  | Accept no dense   |  |                 |                 |                     |                 |                                  |                               |                                  |                 |                               |     |                  |               |     |
| $0.20 \square \Phi \square 0.50$   | 3   |  |                 |                 |                     |                 |                                  |                               |                                  |                 |                               |     |                  |               |     |
| $0.50 \square \Phi \square 1.00$   | 2   |  |                 |                 |                     |                 |                                  |                               |                                  |                 |                               |     |                  |               |     |
| $1.00 \square \Phi$  | 0   |  |                 |                 |                     |                 |                                  |                               |                                  |                 |                               |     |                  |               |     |
| Total Q TY   | 3   |  |                 |                 |                     |                 |                                  |                               |                                  |                 |                               |     |                  |               |     |

| NO | Item          | Criterion   | AQL |
|----|---------------|---|-----|
| 05 | Scratches     | Follow NO.3 LCD black spots, white spots, contamination   |     |
| 06 | Chipped glass | <p>Symbols Define:<br/> x: Chip length    y: Chip width    z: Chip thickness<br/> k: Seal width    t: Glass thickness    a: LCD side length<br/> L: Electrode pad length:</p> <p>6.1 General glass chip :<br/> 6.1.1 Chip on panel surface and crack between panels:</p>  <p><input type="checkbox"/> If there are 2 or more chips, x is total length of each chip.</p> <p>6.1.2 Corner crack:</p>  <p><input type="checkbox"/> If there are 2 or more chips, x is the total length of each chip.</p> | 2.5 |

| NO | Item        | Criterion  | AQL |
|----|-------------|--|-----|
| 06 | Glass crack | <p>Symbols :<br/> x: Chip length    y: Chip width    z: Chip thickness<br/> k: Seal width    t: Glass thickness    a: LCD side length<br/> L: Electrode pad length</p> <p>6.2 Protrusion over terminal :<br/> 6.2.1 Chip on electrode pad :</p>  <p>6.2.2 Non-conductive portion:</p> | 2.5 |

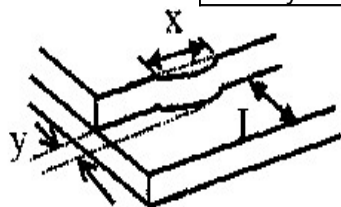


If the chipped area touches the ITO terminal, over 2/3 of the ITO must remain and be inspected according to electrode terminal specifications.

If the product will be heat sealed by the customer, the alignment mark not be damaged.

### 6.2.3 Substrate protuberance and internal crack.

|               |            |
|---------------|------------|
| y: width      | x: length  |
| $y \leq 1/3L$ | $x \leq a$ |



| NO | Item               | Criterion  | AQL  |
|----|--------------------|--|------|
| 07 | Cracked glass      | The LCD with extensive crack is not acceptable.  | 2.5  |
| 08 | Backlight elements | 8.1 Illumination source flickers when lit.   | 0.65 |
|    |                    | 8.2 Spots or scratched that appear when lit must be judged. Using LCD spot, lines and contamination standards.                               | 2.5  |
|    |                    | 8.3 Backlight doesn't light or color wrong.  | 0.65 |
| 09 | Bezel              | 9.1 Bezel may not have rust, be deformed or have fingerprints, stains or other contamination.  | 2.5  |
|    |                    | 9.2 Bezel must comply with job specifications.   | 0.65 |
| 10 | PCB□COB            | 10.1 COB seal may not have pinholes larger than 0.2mm or contamination.  | 2.5  |
|    |                    | 10.2 COB seal surface may not have pinholes through to the IC.   | 2.5  |
|    |                    | 10.3 The height of the COB should not exceed the height indicated in the assembly diagram.   | 0.65 |
|    |                    | 10.4 There may not be more than 2mm of sealant outside the seal area on the PCB. And there should be no more than three places.              | 2.5  |
|    |                    | 10.5 No oxidation or contamination PCB terminals.  | 2.5  |
|    |                    | 10.6 Parts on PCB must be the same as on the production characteristic chart. There should be no wrong parts, missing parts or excess parts. | 0.65 |

|    |           |  |  |
|----|-----------|--|--|
|    |           | <p>10.7 The jumper on the PCB should conform to the product characteristic chart.</p> <p>10.8 If solder gets on bezel tab pads, LED pad, zebra pad or screw hold pad, make sure it is smoothed down.</p> <p>10.9 The Scraping testing standard for Copper Coating of PCB<br/> <math>X * Y \leq 2\text{mm}^2</math></p> | <p>0.65</p> <p>2.5</p> <p>2.5</p>            |
| 11 | Soldering | <p>11.1 No un-melted solder paste may be present on the PCB.</p> <p>11.2 No cold solder joints, missing solder connections, oxidation or icicle.</p> <p>11.3 No residue or solder balls on PCB.</p> <p>11.4 No short circuits in components on PCB.</p>  | <p>2.5</p> <p>2.5</p> <p>2.5</p> <p>0.65</p> |

| NO | Item               | Criterion   | AQL  |
|----|--------------------|---|------|
| 12 | General appearance | 12.1 No oxidation, contamination, curves or, bends on interface Pin (OLB) of TCP.   | 2.5  |
|    |                    | 12.2 No cracks on interface pin (OLB) of TCP.   | 0.65 |
|    |                    | 12.3 No contamination, solder residue or solder balls on product.   | 2.5  |
|    |                    | 12.4 The IC on the TCP may not be damaged, circuits.  | 2.5  |
|    |                    | 12.5 The uppermost edge of the protective strip on the interface pin must be present or look as if it cause the interface pin to sever. | 2.5  |
|    |                    | 12.6 The residual rosin or tin oil of soldering (component or chip component) is not burned into brown or black color.                  | 2.5  |
|    |                    | 12.7 Sealant on top of the ITO circuit has not hardened.  | 2.5  |
|    |                    | 12.8 Pin type must match type in specification sheet.   | 0.65 |
|    |                    | 12.9 LCD pin loose or missing pins.   | 0.65 |
|    |                    | 12.10 Product packaging must the same as specified on packaging specification sheet.  | 0.65 |
|    |                    | 12.11 Product dimension and structure must conform to product specification sheet.  | 0.65 |