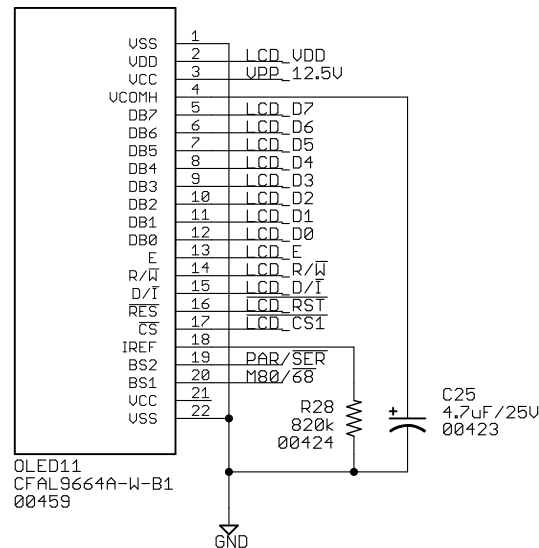
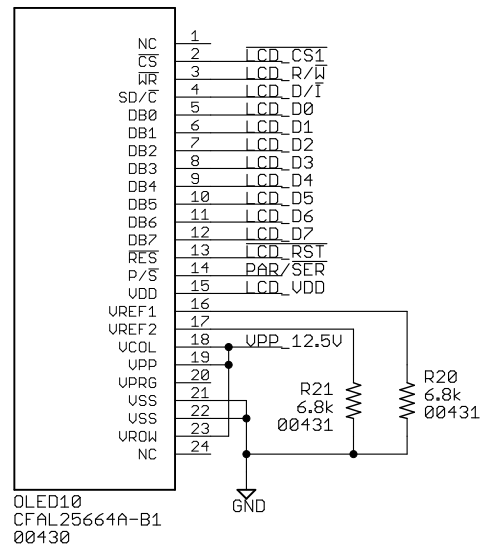
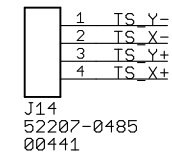
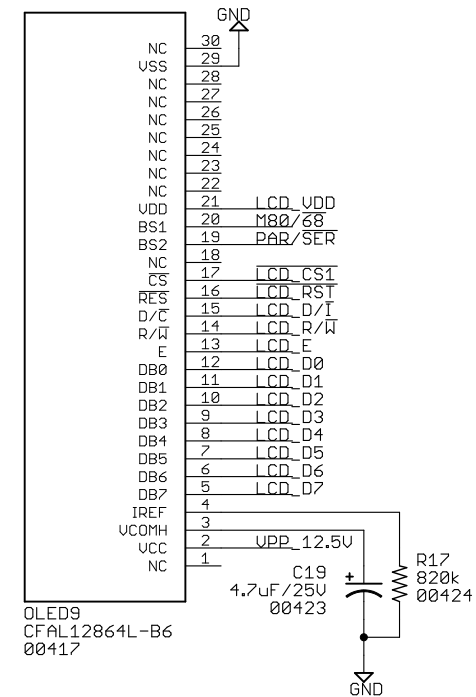
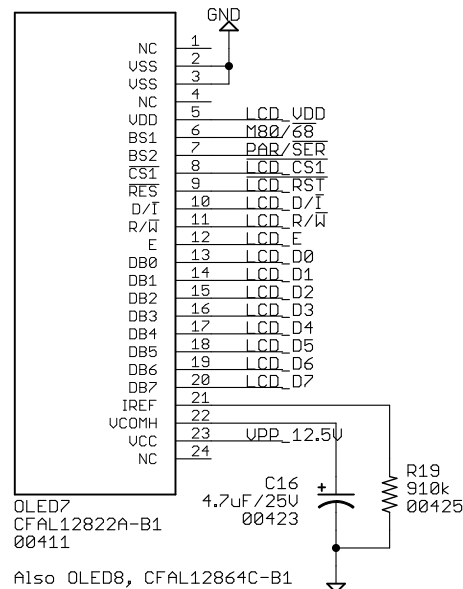
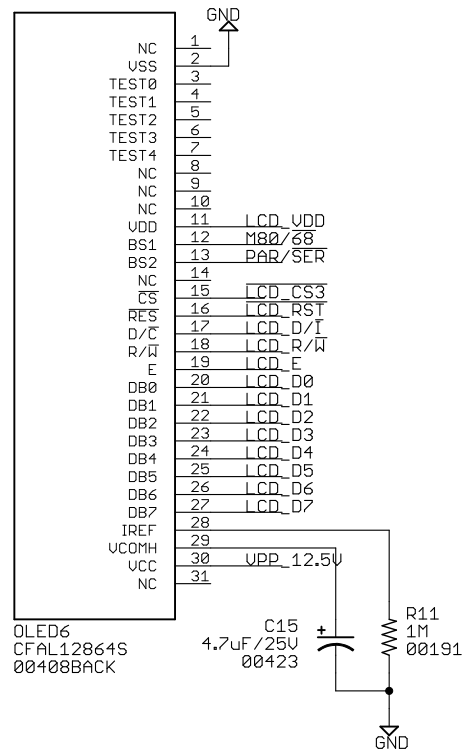

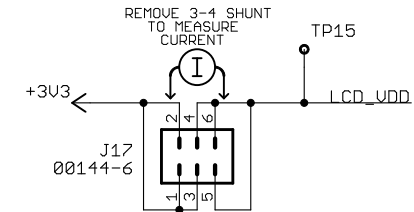
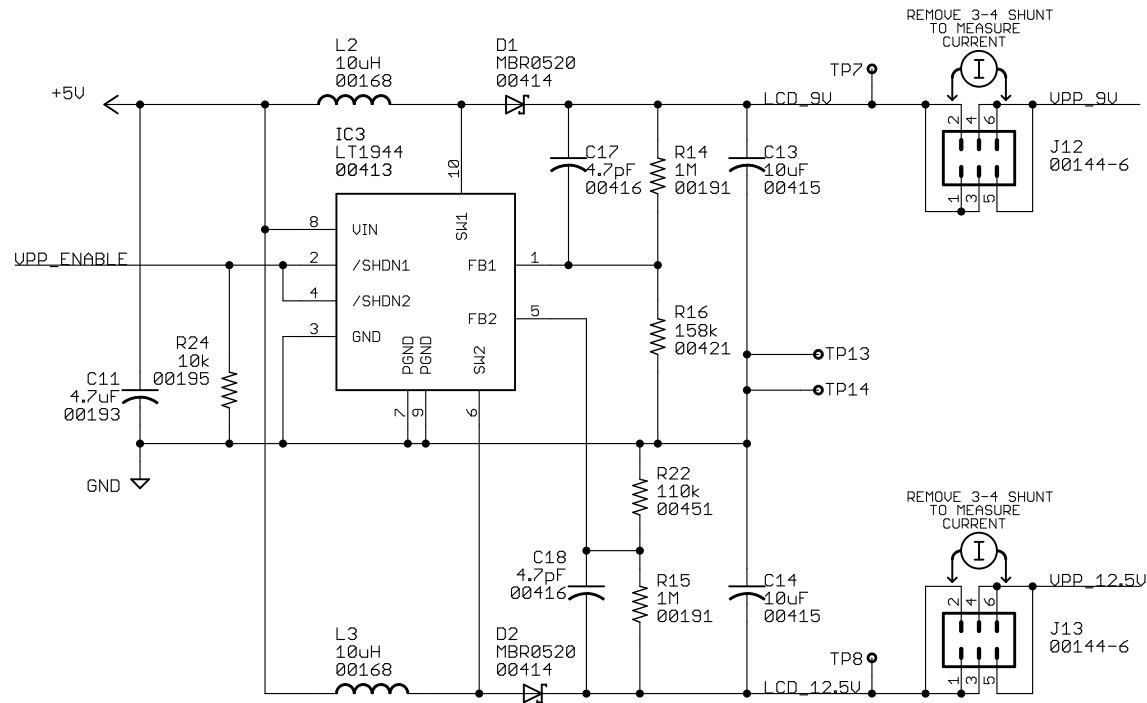
 CrystalFontz America Inc. 12412 E. Saltese Ave. Spokane Valley WA 99216 (888) 206-9720 www.crystalfontz.com	
TITLE: cfa_10009	BY: Jesper Hansen
Description: OLED Module Demo Board SSD1305 Compatible controllers	REV: 1.1
Date: 2009-03-10 00:59:22	Sheet: 2/5



 CrystalFontz America Inc. 12412 E. Saltese Ave. Spokane Valley WA 99216 (888) 206-9720 www.crystalfontz.com	
TITLE: cfa_10009	BY: Jesper Hansen
Description: OLED Module Demo Board SSD1305 Compatible controllers	REV: 1.1
Date: 2009-03-10 00:59:22	Sheet: 3/5



LT1944 Feedback circuit

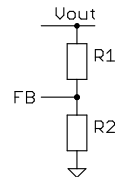
$$V_{out} = (R1/R2 + 1) * 1.23$$

$$R1 = R2 * (V_{out}/1.23 - 1)$$

$$R2 = 1M / (V_{out}/1.23 - 1)$$

$$(9V) \quad R2 = 1M / (9/1.23 - 1) = 158.3k \quad (158k)$$

$$(12.5V) \quad R2 = 1M / (12.5/1.23 - 1) = 109.1k \quad (110k)$$



Crystalfontz America Inc.

12412 E. Saltese Ave. Spokane Valley WA 99216
(888) 206-9720 www.crystalfontz.com

TITLE: cfa_10009

BY: Jesper Hansen

Description: OLED Module Demo Board
SSD1305 Compatible controllers

REV:
1.1

Date: 2009-03-10 00:59:22

Sheet: 4/5

Rev	Date	By	Release Notes
1.0	Sep 12, 2008	Jesper Hansen	Initial Release
1.1	Dec 19, 2008	Jesper Hansen	OLED8 pinout change, mounting hole and milling slot adjustments, partslist update 13V UPP changed to 12.5V, OLED10, 11 and 12 added. TS added for OLED2 and 9.

TEST POINTS

TP1 - PG2
TP2 - PG1
TP3 - PG0
TP4 - PG5
TP5 - PG3
TP6 - PG4
TP7 - LCD 9V
TP8 - LCD 12.5V
TP9 - AVCC
TP10 - RESET\
TP11 - +3V3
TP12 - +5V
TP13 - GND
TP14 - GND
TP15 - LCD VDD
TP16 - GND
TP17 - GND
TP18 - GND
TP19 - GND

JUMPERS

SJ1 - Ground Isolation
Close to connect GND and FGND

SJ2 - Interface select
Open = Parallel, Closed = Serial

SJ3 - 8080 / 6800 mode
Open = 6800, Closed = 8080

SJ4 - Bit select for SCK
1-2 = LCD_D0, 2-3 = LCD_D6

SJ5 - Bit select for MOSI
1-2 = LCD_D1, 2-3 = LCD_D7

SJ6 - TS pen-down interrupt on INT0
Open = Disabled, Closed = Enabled

SJ8 - LCD_UPP select
1-2 = 'Internal' DC/DC, 2-3 = 12.5V supply



CrystalFontz America Inc.
12412 E. Saltese Ave. Spokane Valley WA 99216
(888) 206-9720 www.crystalfontz.com

TITLE: cfa_10009		BY: Jesper Hansen	
Description: OLED Module Demo Board SSD1305 Compatible controllers		REV: 1.1	
Date: 2009-03-10 00:59:22			Sheet: 5/5