

GND

CFA012864D3

128x64 COG LCD with SPI or Parallel Interface



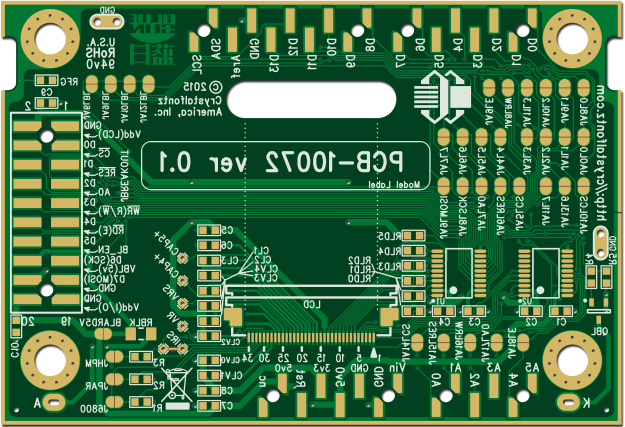
Crystalfontz

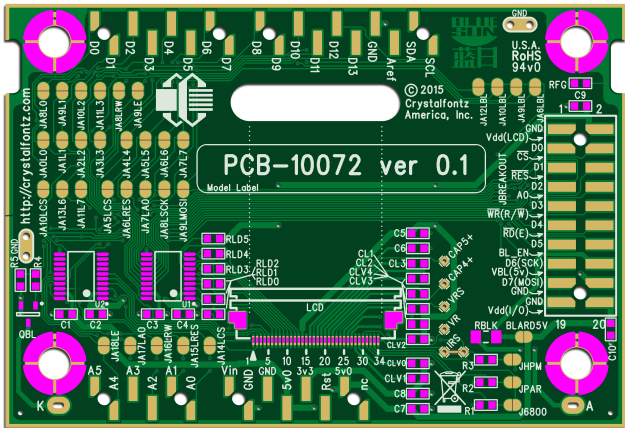
10072 v0.1

GND

94v0
U.S.A.
RoHS



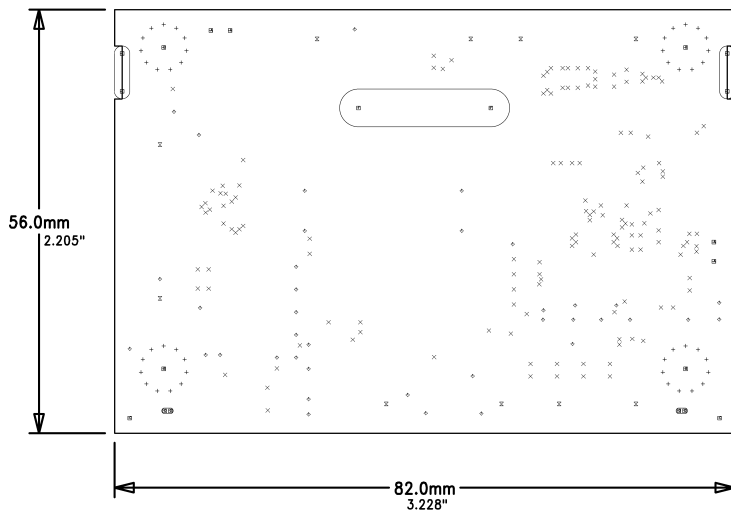




LAYERS: 2
 MATERIAL: FR4, RoHS, 94v0
 THICKNESS: 1.6mm (62.99 mils)
 MINIMUM SPACING: 0.1524 mm (6 mils)
 MINIMUM TRACE: 0.1524 mm (6 mils)
 SMALLEST VIA: 0.254 mm drill in 0.508 mm pad
 (10 mil drill in 20 mil pad)
 FINISH: Gold (ENIG)
 SILK SCREEN: White
 SOLDER MASK: Green


>> IMPORTANT FABRICATION NOTES <<

- 1) Many pads have intentional undersize solder mask openings/oversize pads for physical strength.
- 2) Make top and bottom solder masks exactly as shown. Do NOT "open-up" the solder mask layers. This design uses "solder-mask-defined-pads".



SIZE	QTY	SYM	PLATED	TOL
10	147	⊗	YES	+/-0.0
15.75	44	+	YES	+/-0.0
20	38	◇	YES	+/-0.0
70	10	⊗	NO	+/-0.0
39.37	4	⊗	YES	+/-0.0
163.39	4	⊗	YES	+/-0.0
29.53	2	⊗	NO	+/-0.0
29.53 x 59.06	2	⊗	YES	+/-0.0
78.74 x 275.59	2	⊗	NO	+/-0.0
196.85 x 885.83	1	⊗	NO	+/-0.0

BARE TRACE BEYOND EDGE IS INTENTIONAL
 ESD HANDLING FEATURE. ROUTING WILL
 TRIM COPPER TO EXACT BOARD OUTLINE.
 SEE PDF "BOARD PREVIEW" FOR EXAMPLE.

 Crystallfontz 12412 East Saltese Avenue Spokane Valley, WA 99216 USA Tel: (509) 892-1200 http://www.crystallfontz.com Copyright © 2015 Crystallfontz America, Inc.	PROJECT		CFA-10072
	REVISION	DATE	
	0.1	2015 - 09 - 25	
LAYER	FILE NAME		
DRILL DRAWING	C-10072_v0p1_DD.pho		

