

3v3 BL nRD XL XR YD YU D01 D03 D05 D07

21 J1 22

GND SCK MISO MOSI nCS nRST D/C D00 D02 D04 D06

IM2 IM1 IM0
HIGH HIGH
MOT MOT



CrystalFontz

CFAF240320(V/W)-0201(TS)

GND

VCCIO=VCC

v0.2

RA1 CFA 10081

C4

RK1

RK2

RK3

RK4

1 15 110 115 120 125 130 135 140 145

USA/China

J1LCD

<http://crystalfontz.com>

© 2017 CrystalFontz America, Inc.

RA2

94v0
RoHS

3v3 HSN VSN GND D09 D11 D13 D15 D17 GND

19 J2 20

GND DCL ENA GND D08 D10 D12 D14 D16 GND

3v3 BL nRD XL XR YD YU D01 D03 D05 D07

21 J1 22

GND SCK MISO MOSI nCS nRST D/C D00 D02 D04 D06

IM2 IM1 IM0
HIGH HIGH
MOT MOT



CrystalFontz

CFAF240320(V/W)-0201(TS)

VCCIO=VCC

v0.2

CFA 10081

C4

RA1 RA2 RA3 RA4

1 15 10 15 20 25 30 35 40 45

USA/China

J1LCD

<http://crystalfontz.com>

© 2017 CrystalFontz America, Inc.

3v3 HSN VSN GND D09 D11 D13 D15 D17 GND

94v0
RoHS

GND DCL ENA GND D08 D10 D12 D14 D16 GND

19 J2 20

CFE540350VW-050T-TS
5" 240x320 Color TFT

GND

CFE
10081
v0.5



© 2017

Crystalontz
America, Inc.



U.S.A.
RoHS
04v0

<http://crystalontz.com>

GND



CFAF240320V/W-020T-TS
2" 240x320 Color TFT

GND



© 2017

CrystalFontz
America, Inc.

CFA
10081
v0.2



GND

<http://crystalfontz.com>

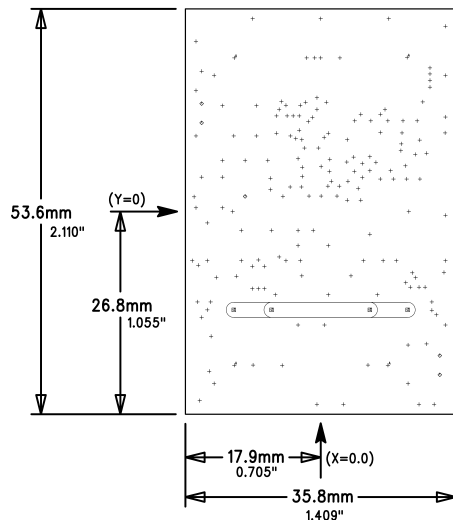
U.S.A.
RoHS
94v0



LAYERS: 2
 MATERIAL: FR4, RoHS, 94v0
 THICKNESS: 0.794mm (31.25 mils)
 MINIMUM SPACING: 0.1778 mm (7 mils)
 MINIMUM TRACE: 0.1778 mm (7 mils)
 SMALLEST VIA: 0.3 mm drill in 0.6 mm pad
 (11.81 mil drill in 23.62 mil pad)
 FINISH: Gold (ENIG) RoHS
 SILK SCREEN: White
 SOLDER MASK: Green


>> IMPORTANT FABRICATION NOTES <<

- 1) Many pads have intentional undersize solder mask openings/oversize pads for physical strength.
- 2) Make top and bottom solder masks exactly as shown. Do NOT "open-up" the solder mask layers. This design uses "solder-mask-defined-pads".
- 3) Silkscreened Legend (white) must be clean and clear. Silkscreen legend must have good registration.
- 4) Edges of board must be smooth. Use router. Do not use "score and break". Mouse bites OK for panel. Check: Crystalfontz_PCB_Board_Edge.pdf



BARE TRACE BEYOND EDGE IS INTENTIONAL
 ESD HANDLING FEATURE. ROUTING WILL
 TRIM COPPER TO EXACT BOARD OUTLINE.
 SEE "Crystalfontz_PCB_Board_Edge.pdf"

SIZE	QTY	SYM	PLATED	TOL
0.3	173	+	YES	+/-0.0
0.9	5	◇	YES	+/-0.0
1.8	4	⊕	NO	+/-0.0
2 x 20	2	⊞	NO	+/-0.0

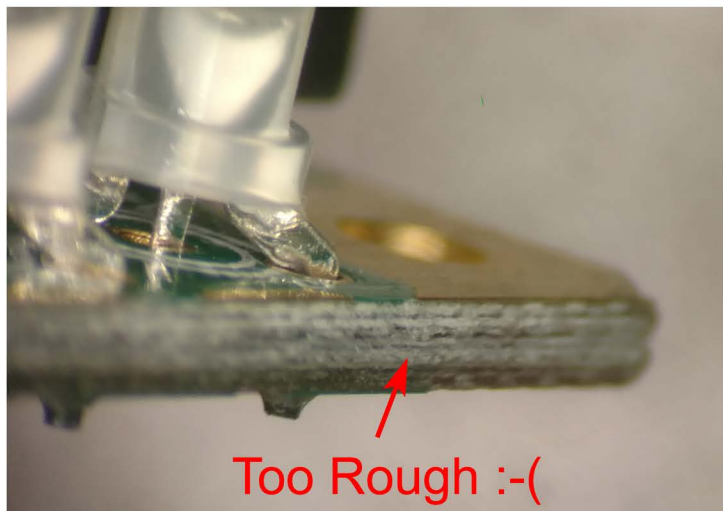
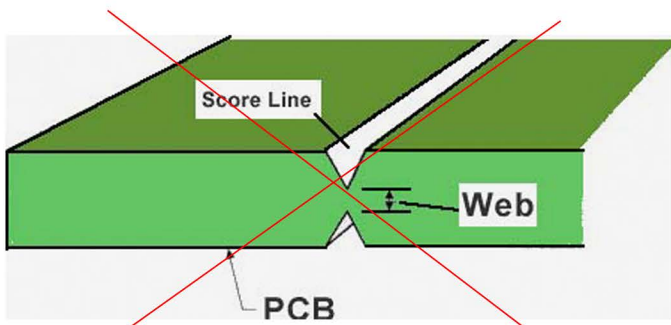
 Crystalfontz 12412 East Saltese Avenue Spokane Valley, WA 99216 USA Tel: (509) 892-1200 http://www.crystalfontz.com Copyright © 2017 Crystalfontz America, Inc.	PROJECT	CFA-10081		VERSION	0v2
	PCB	REVISION	DATE		
	PCB10081	0v2	2017-03-20		
LAYER	Drill Drawing/Notes		FILE NAME	C-CFA10081_0v2_DD.pho	



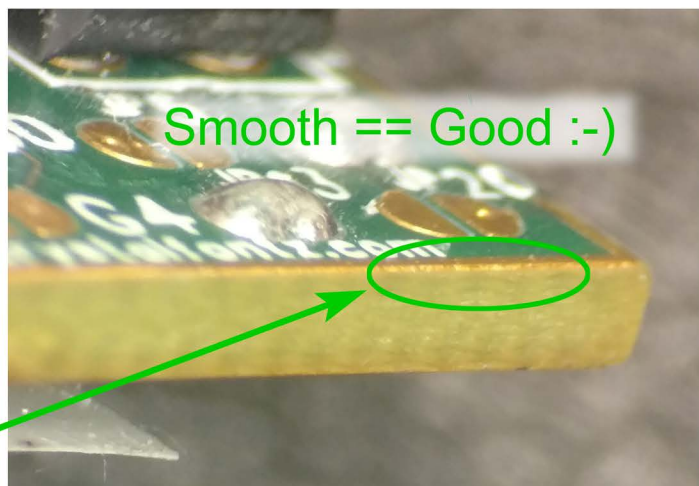
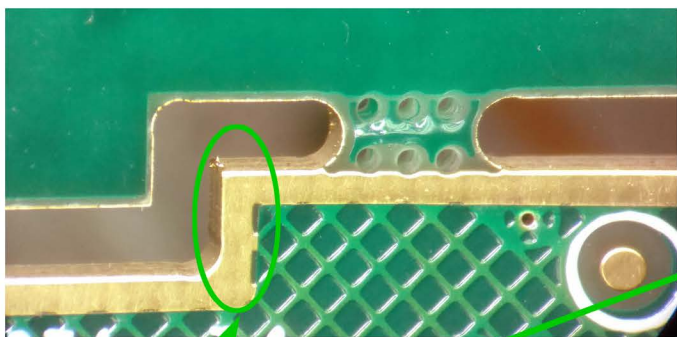
Crystallfontz America, Incorporated

Crystallfontz PCB Edge Notes

Do Not Use :-)

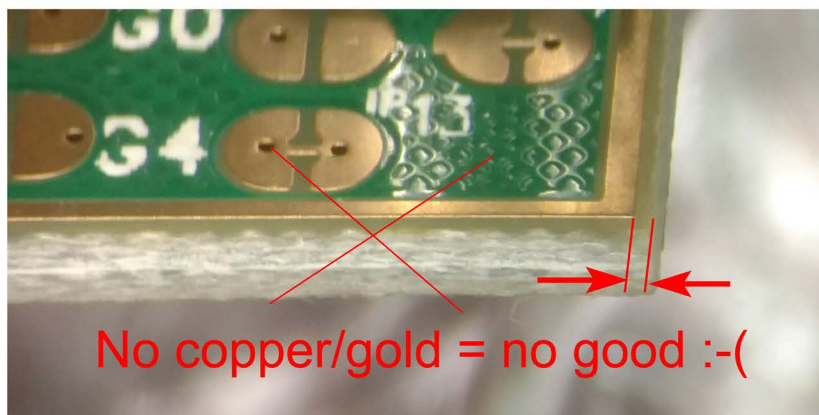


Use "router" :-)



Smooth == Good :-)

Bare copper/gold all the way to the edge of the board :-)



No copper/gold = no good :-)

Crystallfontz America, Incorporated

12412 East Saltese Avenue
Spokane Valley, WA 99216-0357
Telephone: (509) 892-1200

<http://www.crystallfontz.com>

Toll Free: (888) 206-9720

Fax: (509) 892-1203

e-mail: brent@crystallfontz.com