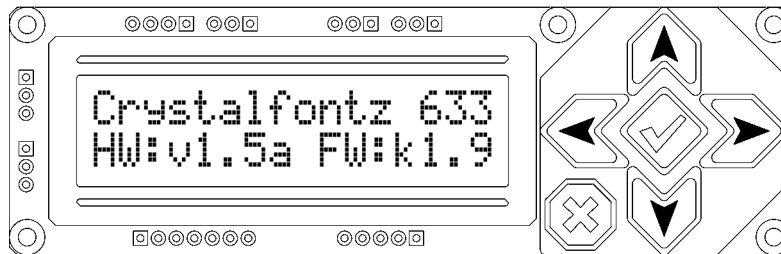


Crystalfontz America, Incorporated

SERIAL LCD MODULE SPECIFICATIONS



Crystalfontz Model Number	CFA633-YYB-KS
Hardware Version	v1.5a August 2005
Firmware Version	k1.9 August 2005
Data Sheet Version	k1.9c December 2005
Product Pages	www.crystalfontz.com/products/633

Customer Name	
Customer Part Number	

Crystalfontz America, Incorporated

12412 East Saltese Avenue
Spokane Valley, WA 99216-0357

Phone: (888) 206-9720

Fax: (509) 892-1203

Email: techinfo@crystalfontz.com

URL: www.crystalfontz.com



REVISION HISTORY

HARDWARE	
2005/08/01	Start Public Version Tracking. Current hardware version: v1.5a

FIRMWARE	
2005/08/01	Start Public Version Tracking. Current firmware version: k1.9

DATA SHEET	
2005/08/01	Start Public Version Tracking. Data Sheet version: k1.9b Changes since last released version (k1.9a): Added note on length of command 30 reply (Pg. 35) .
2005/12/20	Current Data Sheet version: k1.9c Changes since last released version (k1.9b): Added "Character Pitch" dimension (Pg. 6) . Corrected return packet "type" for command 26: Set Fan Tachometer Glitch Filter (Pg. 31) . Corrected return packet "type" for command 27: Query Fan Power & Fail-Safe Mask (Pg. 32) . Corrected "type" for 33: Set Baud Rate (Pg. 36) . Corrected length returned by reply for command 35: Read GPIO Pin Levels and Configuration State (Pg. 38) . Formatting, content organization, and minor rewording to improve readability. For added convenience, a separate data sheet is available for each CFA-633 module variant.





CONTENTS

FEATURES	4
ORDERING INFORMATION	5
SYSTEM BLOCK DIAGRAM	5
PHYSICAL CHARACTERISTICS	6
TEMPERATURE RANGE	6
OPTICAL CHARACTERISTICS	6
ELECTRICAL SPECIFICATIONS	7
RELIABILITY	8
STANDARD (NON-ATX) POWER CONNECTION	8
POWER CONNECTION THROUGH J1 (RS-232)	9
ATX POWER SUPPLY	
POWER AND CONTROL CONNECTIONS	10
RS-232 CONNECTIONS	13
FAN CONNECTIONS	14
DALLAS SEMICONDUCTOR 1-WIRE DEVICE CONNECTIONS	16
HOST COMMUNICATIONS	17
Packet Structure	17
About Handshaking	18
Report Codes	18
0x80: Key Activity	18
0x81: Fan Speed Report	18
0x82: Temperature Sensor Report	19
Command Codes	20
0: Ping Command	20
1: Get Hardware & Firmware Version	20
2: Write User Flash Area	20
3: Read User Flash Area	21
4: Store Current State As Boot State	21
5: Reboot CFA-633, Reset Host, or Power Off Host	22
6: Clear LCD Screen	22
7: Set LCD Contents, Line 1	23
8: Set LCD Contents, Line 2	23
9: Set LCD Special Character Data	23
10: Read 8 Bytes of LCD Memory	24
11: Set LCD Cursor Position	24
12: Set LCD Cursor Style	24
13: Set LCD Contrast	25
14: Set LCD & Keypad Backlight	25
16: Set Up Fan Reporting	25
17: Set Fan Power	26
18: Read DOW Device Information	26
19: Set Up Temperature Reporting	27
20: Arbitrary DOW Transaction	28
21: Set Up Live Fan or Temperature Display	29
22: Send Command Directly to the LCD Controller	29



CONTENTS, CONTINUED

23: Configure Key Reporting	30
24: Read Keypad, Polled Mode	30
25: Set Fan Power Fail-Safe	31
26: Set Fan Tachometer Glitch Filter	31
27: Query Fan Power & Fail-Safe Mask	32
28: Set ATX Power Switch Functionality	33
29: Enable/Disable and Reset the Watchdog	34
30: Read Reporting & Status	35
31: Send Data to LCD	36
32: Reserved for CFA-631 Key Legends	36
33: Set Baud Rate	36
34: Set or Set and Configure GPIO Pin	36
35: Read GPIO Pin Levels and Configuration State	38
CHARACTER GENERATOR ROM (CGROM)	40
CFA-633 MODULE OUTLINE DRAWING	41
CFA-633 KEYPAD OUTLINE DRAWING	42
JUMPER LOCATIONS AND FUNCTIONS	43
CARE AND HANDLING PRECAUTIONS	44
APPENDIX A:	
CONNECTING A DS2450 1-WIRE QUAD A/D CONVERTER	46
APPENDIX B:	
CONNECTING A DS1963S SHA IBUTTON	48
APPENDIX C:	
CALCULATING THE CRC	51
Algorithm 1: "C" Table Implementation	51
Algorithm 2: "C" Bit Shift Implementation	52
Algorithm 3: "PIC Assembly" Bit Shift Implementation	53
Algorithm 4: "Visual Basic" Table Implementation	55
Algorithm 5: "Java" Table Implementation	56
Algorithm 6: "Perl" Table Implementation	57
APPENDIX D:	
QUALITY ASSURANCE STANDARDS	59



LIST OF FIGURES

Figure 1. CFA633-YYB-KS System Block Diagram - - - - -	5
Figure 2. CFA633-YYB-KS connection for standard "3 ½ inch floppy" power supply cable - - - - -	9
Figure 3. CFA633-YYB-KS RS-232 power connection - - - - -	10
Figure 4. CFA633-YYB-KS ATX power supply and control connections - - - - -	12
Figure 5. CFA633-YYB-KS default and alternate pin assignments - - - - -	13
Figure 6. CFA633-YYB-KS's four fan connections - - - - -	14
Figure 7. Graph showing fan PWM power (% on time) for various fan RPM - - - - -	15
Figure 8. CFA633-YYB-KS connection for Dallas Semiconductor 1-wire (DOW) devices - - - - -	16
Figure 9. Character Generator ROM (CGROM) - - - - -	40
Figure 10. CFA-633 Module Outline Drawing (HW v1.5a identical to v1.0) - - - - -	41
Figure 11. CFA-633 Keypad Outline Drawing (v1.5a identical to v1.0) - - - - -	42
Figure 12. CFA-633 Jumper Locations and Functions - - - - -	43
Appendix A Figure 1. CFA-633 Test Circuit Schematic - - - - -	46
Appendix B Figure 1. Connect CFA-633 to Maxim/Dallas DS19632 SHA iButton using DS9094 iButton Clip	48



FEATURES

- ☐ 16x2 LCD is compact: fits in a 1U rack mount case (35 mm overall height).
- ☐ Bidirectional 19200 / 115200 baud ESD protected RS-232 interface.
- ☐ Integrated LED backlit 6-button translucent silicon keypad.
- ☐ Yellow-green edge LED backlit with STN-yellow-green positive mode LCD (displays dark characters on yellow-green background).
- ☐ Yellow-green LED backlit keypad.
- ☐ 5.25" half-height drive-bay [CFA-633 Serial / USB LCD Mounting Bracket](#) available (optional).
- ☐ Fully decoded keypad: any key combination is valid and unique.
- ☐ Robust packet-based communications protocol with 16-bit CRC.
- ☐ Built-in reprogrammable microcontroller (factory operation).
- ☐ Nonvolatile memory capability (EEPROM):
 - Customize the "power-on" display settings.
 - 16-byte "scratch" register for storing IP address, netmask, system serial number . . .
- ☐ Expandable firmware and configurable hardware can be customized to add specific features for your system needs (tooling fee and minimum order may apply):
 - Other additional analog or digital I/O devices.
 - Provide "dongle" functionality for software copy protection.
 - Autonomous hardware monitoring.
- ☐ Firmware support for CFA633-YYB-KS allows:
 - ATX power supply control functionality allows the buttons on the CFA633-YYB-KS to replace the "power" and "reset" switches on your system, simplifying front panel design.
 - Four fan connectors with RPM monitoring and variable PWM fan power control.
 - Fail-safe fan power settings allows safe host fan control based on temperature.
 - Temperature monitoring: up to 32 channels at up to 0.5 degrees C absolute accuracy (using optional Crystalfontz [WRDOWY17](#) cable with Dallas 1-Wire sensor).
 - Hardware watchdog can reset host on host software failure.
 - "Live Display" shows up to eight temperature or fan readings without host intervention, allowing fans and temperatures to be shown immediately at boot, even before the host operating system is loaded.
 - RS-232 to Dallas Semiconductor 1-Wire bridge functionality allows control of other 1-Wire compatible devices (ADC, voltage monitoring, current monitoring, RTC, GPIO, counters, identification/encryption). (Additional hardware required).



ORDERING INFORMATION

PART NUMBER	FLUID	LCD GLASS COLOR	IMAGE	POLARIZER FILM	BACKLIGHTS
CFA633-YYB-KS	STN	yellow-green	positive	transflective	LCD: yellow-green edge LEDs Keypad: yellow-green LEDs

SYSTEM BLOCK DIAGRAM

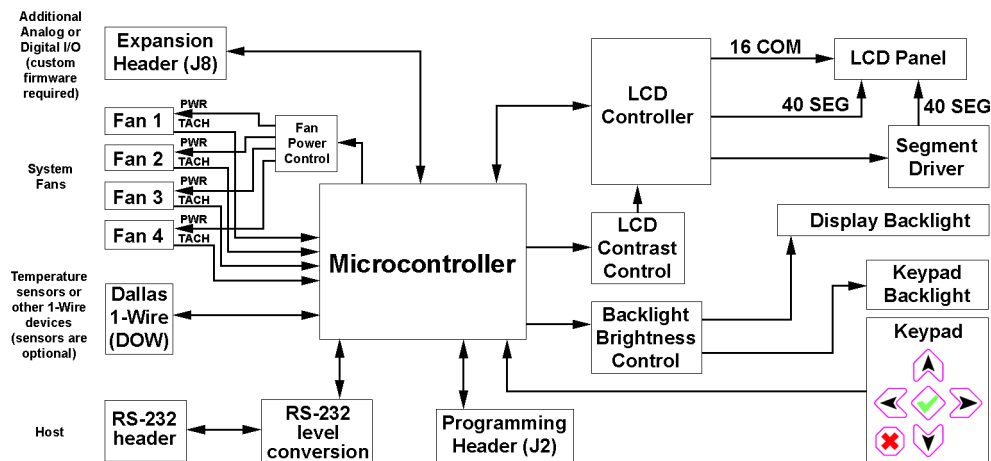


Figure 1. CFA633-YYB-KS System Block Diagram



PHYSICAL CHARACTERISTICS

ITEM	SIZE (mm)
Module Dimensions	110.5 (W) x 35.0 (H)
Viewing Area	61.0 (W) x 15.8 (H)
Active Area	56.2 (W) x 11.2 (H)
Character Size	2.95 (W) x 5.55 (H)
Character Pitch	3.55 (W) x 5.95 (H)
Dot Size	0.55 (W) x 0.65 (H)
Dot Pitch	0.60 (W) x 0.70 (H)
Depth:	
Without Keypad or Connectors	10.7
With Keypad, without Connectors	12.1
Without Keypad, with Connectors	20.1
With Keypad, with Connectors	24.1
Keystroke Travel (approximate)	2.4
Weight	45 grams (typical)

TEMPERATURE RANGE

CRITERIA	SPECIFICATION
Operating Temperature Range	0°C minimum to +50°C maximum
Storage Temperature Range	-10°C minimum to +60°C maximum

OPTICAL CHARACTERISTICS

Viewing Direction	6 o'clock
-------------------	-----------



ELECTRICAL SPECIFICATIONS

DRIVING METHOD	SPECIFICATION
Duty	1/16
Bias	1.5

SUPPLY VOLTAGE	MINIMUM	NOMINAL	MAXIMUM
Supply voltage for driving the LCD module (logic)	+4.75v	+5.0v	+5.25v
Supply voltage for backlights*	+1v	+12v	+13v
Supply voltage to run fans*	+4.75v	+12v	+13v
*JP7 must be opened for the operating range of +12v fans to be different from +12v backlights (listed in this table). If JP7 is closed (which is the factory default), then the voltage specification range for backlights must be observed for both backlights AND fans. Please see Figure 4. on Pg. 12.			

ITEM	TYPICAL CURRENT CONSUMPTION
+5v for logic (LCD + microcontroller)	13 mA
+12v for backlight (at 100%)	45 mA
+12v for fans Draw on +12v for fans will vary, depending on user equipment connected to FAN1 through FAN4. <ul style="list-style-type: none">● Maximum <i>continuous</i> current draw must be <1.5 A per fan connector, no more than 4 A total.● Maximum <i>pulsed</i> current draw may be up to 5 A per connector. The pulse width must be less than 50 mS. (This pulse specification allows for the fan's start-up current spike.)	

GPIO CURRENT LIMITS	SPECIFICATION
Sink	25 mA
Source	10 mA



CRITERIA	SPECIFICATION
Backlight PWM Frequency	320 Hz nominal
Fan Tachometer Speed Range (assuming 2 PPR*)	600 RPM to 3,000,000 RPM
Fan Power Control PWM Frequency	18 Hz nominal
* PPR is pulses per revolution, also written as p/r.	

ESD (Electro-Static Discharge) Specifications:

Tx and Rx pins of connector "RS-232" only:

- +15 kV Human Body Model
- +15 kV IEC1000-4-2 Air Discharge
- +8 kV IEC1000-4-2 Contact Discharge

The remainder of the circuitry is industry standard CMOS logic and susceptible to ESD damage. Please use industry standard antistatic precautions as you would for any other PCB such as expansion cards or motherboards. For more information, read [CARE AND HANDLING PRECAUTIONS \(Pg. 44\)](#).

RELIABILITY

ITEM	SPECIFICATION
LCD portion (excluding Keypad and Backlights)	50,000 to 100,000 hours (typical)
Keypad	1,000,000 keystrokes
LED Backlights	50,000 to 100,000 hours (typical)

STANDARD (NON-ATX) POWER CONNECTION

JP7 and JP8 are closed at the factory, allowing a single standard "3 ½ inch floppy" power supply cable to provide power to the CFA633-YYB-KS. JP7 can be opened in order to supply power to the fans separate from the power to the backlight. See [JUMPER LOCATIONS AND FUNCTIONS \(Pg. 43\)](#) for jumper positions.

NOTE

Do not connect high power fans to the module when +12v is supplied through J8, Pin 3 and JP7 is closed. Total fan current must be less than 500 mA if +12v is supplied through J8, Pin 3 and JP7 is closed. When using high power fans, supply the +12v through the "PWR" connector.

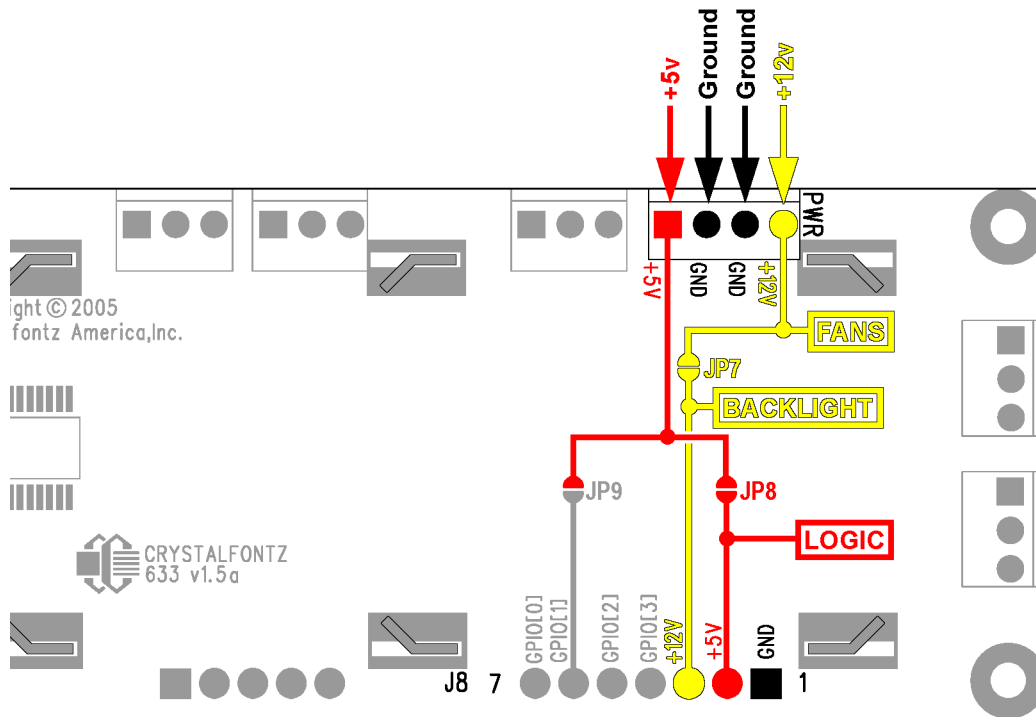


Figure 2. CFA633-YYB-KS connection for standard "3 1/2 inch floppy" power supply cable

POWER CONNECTION THROUGH J1 (RS-232)

The +5v and +12v power can be supplied through connector J1, allowing a single cable to contain both power and data connections. If the "Default RS-232 Pin Assignments" are selected, the five connections needed to operate the module are all on a single column of pins on J1, which allows a single 0.1" spacing 5-conductor cable to connect between the CFA633-YYB-KS and your embedded system.

To enable +5v to be supplied through J1, close JP13. To allow +12v to be supplied through J1, close JP10. JP10 and JP13 are open by default from the factory. See [JUMPER LOCATIONS AND FUNCTIONS \(Pg. 43\)](#) for jumper positions and functions.

NOTE

Do not connect high power fans to the module when +12v is supplied through J1/JP10. Total fan current must be less than 500 mA if +12v is supplied through J1/JP10. When using high power fans, supply the +12v through the "PWR" connector.

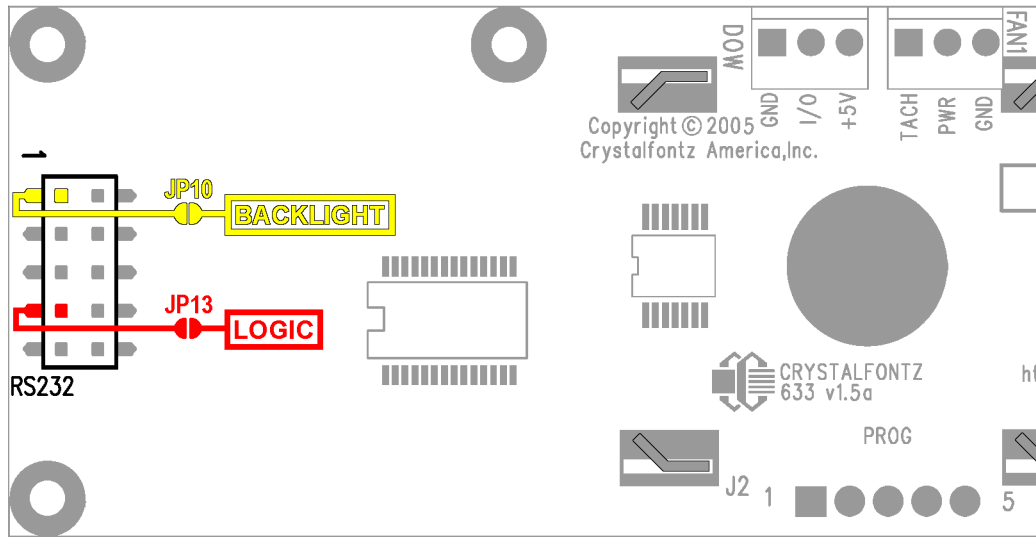


Figure 3. CFA633-YYB-KS RS-232 power connection

ATX POWER SUPPLY POWER AND CONTROL CONNECTIONS

The CFA-633 has the ability to control power on/off and reset functions of a standard ATX PC.

NOTE

The GPIO pins used for ATX control must not be configured as user GPIO, and must be configured to their default drive mode in order for the ATX functions to work correctly. These settings are factory default but may be changed by the user. Please see command [34: Set or Set and Configure GPIO Pin \(Pg. 36\)](#).

The CrystalFontz [WRPWRY14](#) cable simplifies ATX power control connections. When using this cable, please open jumper JP8 and close jumper JP9 in order to ensure correct operation. See [JUMPER LOCATIONS AND FUNCTIONS \(Pg. 43\)](#) for jumper positions and locations.

NOTE

If the WRPWRY14 cable is ordered at the same time as the CFA633-YYB-KS, CrystalFontz will install the WRPWRY14, open jumper JP8, and close jumper JP9 (unless otherwise instructed).

For this functionality, the combination of the CFA633-YYB-KS is powered from the PC's V_{SB} signal (the "stand-by" or "always-on" +5v ATX power supply output).

By default, the pin labeled "+5v" on the CFA633-YYB-KS's connector J8 is electrically connected to the "+5v" pin on the CFA633-YYB-KS's J3 power connector. If you are using CFA633-YYB-KS to do ATX power control, you will want to open jumper JP8, which will disconnect the "+5v" of the "PWR" connector from the "+5v" of connector J8.



Since the CFA633-YYB-KS must act differently depending on if the host's power supply is "on" or "off", you must also connect the host's "switched +5v" to GPIO[1] (Pin 6 of the CFA633-YYB-KS's connector J8). This pin functions as POWER-ON SENSE. The POWER-ON SENSE pin is configured as an input with a pull-down (5 K Ω nominal). To simplify this connection, JP9 is closed to make a connection between the "+5v" pin on the CFA633-YYB-KS's "PWR" connector and the POWER-ON SENSE pin.

The motherboard's "power switch" input is connected to Pin 5 of the CFA633-YYB-KS's connector J8 (labeled as "GPIO[2]"). This pin functions as POWER CONTROL. The POWER CONTROL pin is configured as a high-impedance input until the LCD module wants to turn the host on or off, then it will change momentarily to low impedance output, driving either low or high depending on the setting of POWER_INVERT. (See command [28: Set ATX Power Switch Functionality \(Pg. 33\)](#).)

The motherboard's "reset switch" input is connected to Pin 4 of the CFA633-YYB-KS connector J8 (labeled as "GPIO[3]"). This pin functions as RESET. The RESET pin is configured as a high-impedance input until the LCD module wants to reset the host. Then it will change momentarily to low impedance output, driving either low or high depending on the setting of RESET_INVERT. (See command [28: Set ATX Power Switch Functionality \(Pg. 33\)](#).) This connection is also used for the hardware watchdog.

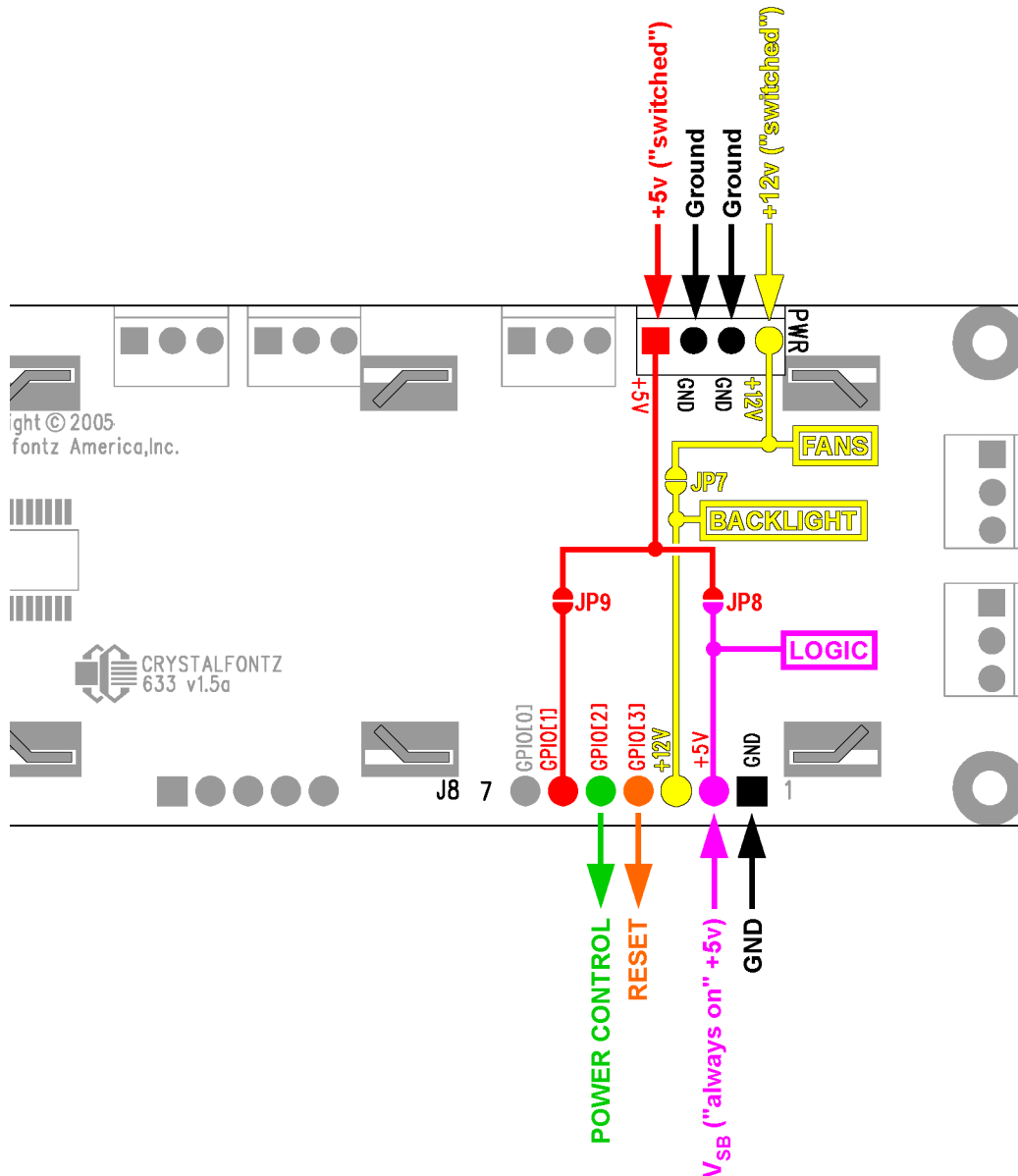


Figure 4. CFA633-YYB-KS ATX power supply and control connections

Once configured by the host software (see command [28: Set ATX Power Switch Functionality \(Pg. 33\)](#)), the following functions may be individually enabled:

- System power on. If POWER-ON SENSE is low (0v), pressing the green check key for 0.25 seconds will turn the unit on by driving POWER CONTROL line for the pulse width set by command 28: Set ATX Power Switch Functionality (1.0 seconds default).
- System hard power off. If POWER-ON SENSE is high (+5v) pressing the red "X" key for 4 seconds will turn the system off by driving the POWER CONTROL line. The line will be driven for a minimum of the pulse width set by command [28: Set ATX Power Switch Functionality \(Pg. 33\)](#) (1.0 seconds default). If the user continues to press the key, the CFA633-YYB-KS will continue to drive the line for up to an additional 5 seconds.
- If POWER-ON SENSE is high (+5v) pressing the green check key for 4 seconds will reset the system off by driving the RESET line for 1 second. The CFA633-YYB-KS will reboot itself immediately after resetting the host.



Since the computer and LCD module must look “off” if the computer’s power is “off”, the CFA633-YYB-KS can be configured to monitor the POWER-ON SENSE line and blank its display any time the POWER-ON SENSE line is low. If +12v remains active (which would not be expected, since the host is “off”), the fans will remain on at their previous settings.

RS-232 CONNECTIONS

JP2, JP4, and JP6 are closed at the factory, selecting the “Default RS-232 Pin Assignments”. This connection allows a low-cost ribbon cable (CrystalFontz [WR232Y08](#)) to connect the CFA633-YYB-KS to a PC’s DB-9 COM port. By opening JP2, JP4 and JP6 and closing JP1, JP3 and JP5 you can select the “Alternate RS-232 Pin Assignments”. See [JUMPER LOCATIONS AND FUNCTIONS \(Pg. 43\)](#) for jumper positions.

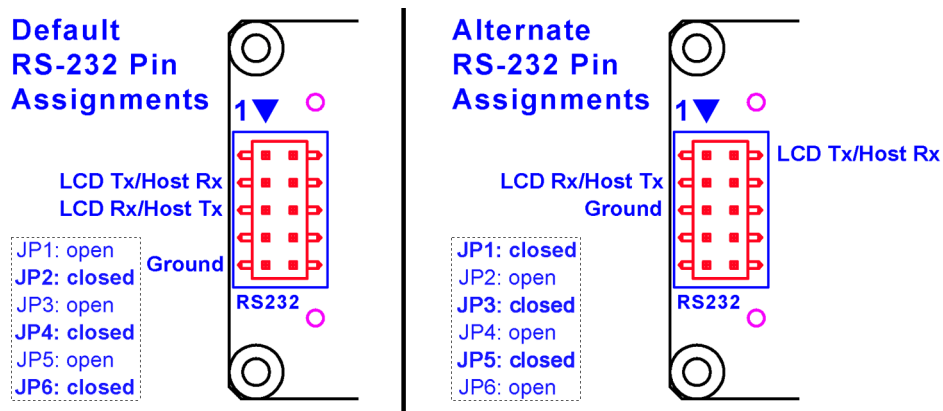


Figure 5. CFA633-YYB-KS default and alternate pin assignments

If there is a matching 0.1" center, 10-pin RS-232 connector on your system's motherboard, then in most cases a simple straight-through ribbon cable (such as CW Industries' [C3AAG-1018G-ND](#) cable available from Digi-Key) can be used to connect from the CFA633-YYB-KS to the motherboard's header. The pin order of your motherboard's header will determine if the CFA633-YYB-KS's pin assignments need to be “Default” or “Alternate”.

Please note that the CFA-633 can be powered through this header. Please refer to [POWER CONNECTION THROUGH J1 \(RS-232\) \(Pg. 9\)](#) above for details.



FAN CONNECTIONS

The CFA633-YYB-KS supports up to 4 standard “3-pin” cooling fans. The fan connectors are compatible with industry standard “3-pin” fans.

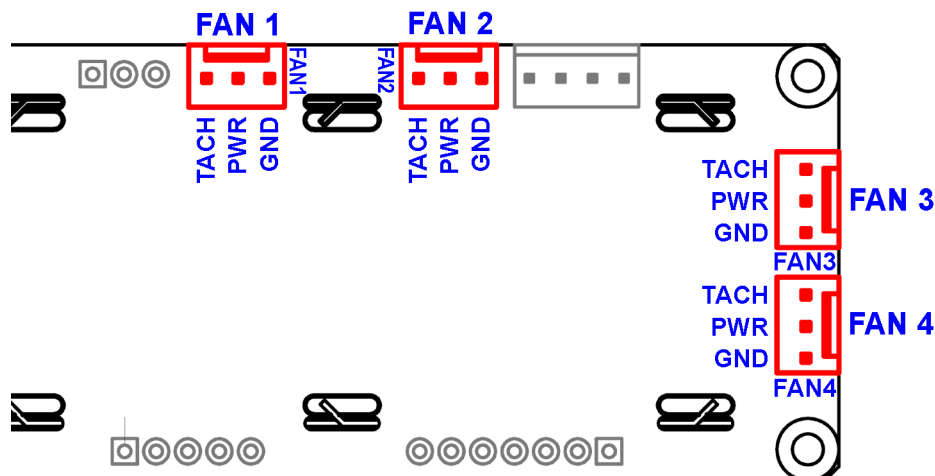


Figure 6. CFA633-YYB-KS's four fan connections

The average power delivered to each fan may be set to any level between 0% and 100% through command [17: Set Fan Power \(Pg. 26\)](#). The power setting controls the PWM duty cycle of a high-performance open-drain FET connected between the system ground and the GND pin of each fan connector. The PWM frequency is nominally 18 Hz.

The CFA633-YYB-KS can measure the frequency of the fan's tachometer signal, and given the pulses-per-revolution, calculate the RPM and display it on the LCD or report the information needed to calculate the RPM to the host. If a fan's power is set to 100%, then the average frequency of each fan's tachometer signal is measured over a 1/8 second (125 mS) period of time. Each fan is measured in sequence, so updated fan speed information is available every 1/2 second (500 mS) for each fan.

The power to a fan must be on in order for the fan's tachometer signal to be valid. If a fan is configured to report its speed to the host, the power of the fan will be unconditionally set to 100% at the start of the 1/8 second period of time when the CFA633-YYB-KS is measuring the frequency of the tachometer signal—overriding the PWM. The CFA633-YYB-KS will leave the power to the fan on until the glitch delay (see command [26: Set Fan Tachometer Glitch Filter \(Pg. 31\)](#) has expired and two tachometer edges have been detected. The normal PWM cycle will then resume.

This technique allows the fan speed to be measured with a very minimal effect on the speed of the fan. If the fan power is set to 100% or if the speed of the fan and length of the PWM on time are such that the speed can be measured without stretching the PWM, then this override will not change the speed of the fan at all. If the fan power is set to some level other than 100% and the PWM on time is short compared to the tachometer signal frequency, then the fan speed will “pulse” slightly every 1/2 second due to the stretching of the PWM on time. During tachometer measuring, the maximum width of a stretched on pulse is 1/8 second. For some fans, the result is not very noticeable, and this technique will allow you to monitor the average speed of the fan while controlling the average power of the fan. For other fans (particularly high torque, high RPM models) the pulsing effect may be undesirable.

Since the on-time is dynamically stretched by the CFA633-YYB-KS to force the fan to produce two tachometer edges, the result is that the fan will resist stalling as power is reduced towards 0% and the RPM is being measured.



Here is a graph of fan RPM vs. the fan power setting for a typical high-performance 80 mm fan (Delta FFB0812SHE):

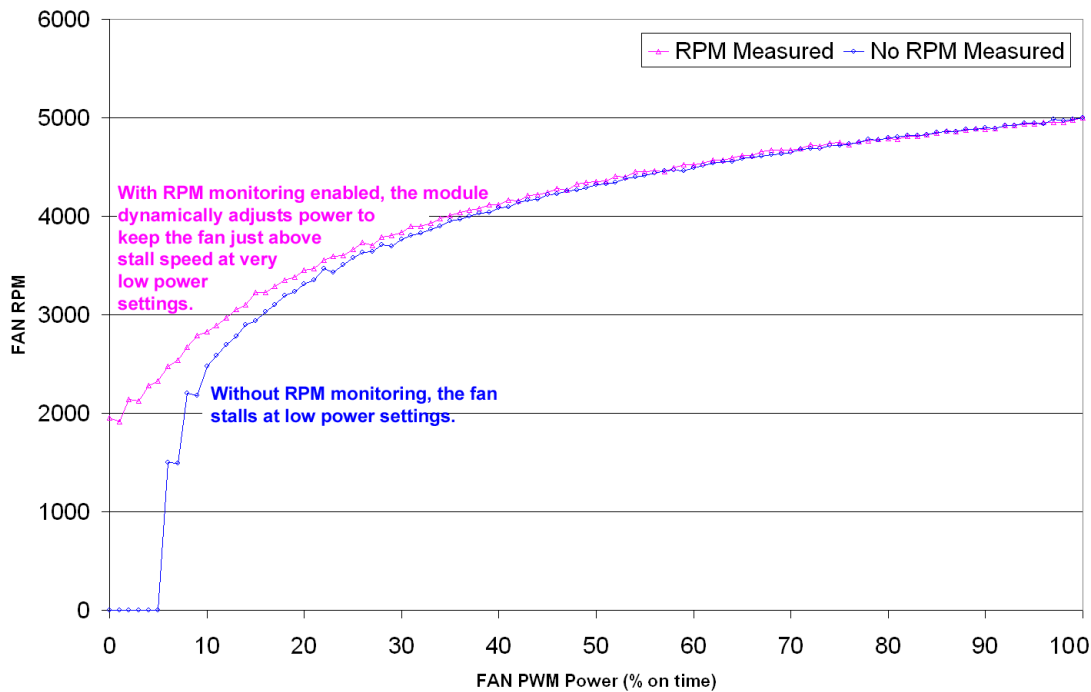


Figure 7. Graph showing fan PWM power (% on time) for various fan RPM

Typically if the fan speed is not at 100% then it is being controlled by the host software to drive a temperature sensor to a given reading in a closed-loop arrangement. In this case, the temperature, rather than the fan speed would be monitored for out-of-range conditions. If the temperature is within specification, you really do not care how fast the fan is turning. In an unattended system, it may be a good idea to set each fan to 100% for a few seconds during a test cycle—perhaps once a day or once a week—and log the steady-state RPM attained by the fan. If that steady state RPM were higher (this can be caused by a blocked airflow) or lower than expected (perhaps the fan's bearings are failing), a maintenance warning would be generated by the host software.

NOTE

For safety, enable the fan power fail-safe (see command [25: Set Fan Power Fail-Safe \(Pg. 31\)](#)) on any fans involved in host-based speed control. By enabling the fail-safe on a fan that is being used in closed-loop control through host software, the CFA633-YYB-KS will turn that fan to 100% if the host fails to update the power of the fans within a given time interval. For instance, if the communications cable is dislodged, the host operating system hangs, or cooling control process is terminated, the CFA633-YYB-KS will automatically force those fans to 100%, preventing potential equipment damage due to lack of cooling.

We tested the CFA633-YYB-KS with a large range of fans and had good results. However, you are responsible for determining if the control and monitoring methods employed by the LCD module are acceptable for your application. In particular, if a fan's power is set too low, it may stall or fail to start, providing no cooling. Using a PWM to control fan speed is generally accepted; however we make no claims that it is compatible with any particular fan or that it does not affect the lifetime of the fans. Some higher torque fans (especially the ball-bearing models) may click, buzz, or growl at low power settings due to the torque in the fan going from positive to negative in each PWM cycle. If you limit the power setting to 0% or 100% there should be no compatibility issues. We do not recommend operating a fan below 20% PWM duty cycle for an extended period of time. Limiting the minimum PWM duty cycle to 30% or 40% should reduce the mechanical and electrical stresses in the fan, avoiding premature failure.



When power is applied to the CFA633-YYB-KS, it will set each fan's power to the factory default value of 100% or to the value that is stored in the boot state. To minimize peak current loading on the +12v supply during start-up, the fans are started in sequence with a 0.5 second delay between any fans that are on.

DALLAS SEMICONDUCTOR 1-WIRE DEVICE CONNECTIONS

TEMPERATURE SENSORS

The CFA633-YYB-KS supports Dallas Semiconductor 1-Wire (DOW) temperature sensors. Any combination of up to 32 [DS1822](#) Econo 1-Wire Digital Thermometer (2°C absolute accuracy) or [DS18B20](#) High Precision 1-Wire Digital Thermometer (0.5°C absolute accuracy) temperature sensors or other DOW compatible devices are directly supported. (See [Figure 8. on Pg. 16.](#))

CrystalFontz supplies the [WRDOWY17](#) cable, which contains a DS18B20 attached to a "daisy chain" cable. If a WRDOWY17 is ordered at the same time as a CFA633-YYB-KS, CrystalFontz can load the WRDOWY17's mating connector into the CFA-633's "DOW" position. For reference, the mating connector for the WRDOWY17 is [Molex 70543-0002](#) available from Digi-Key.

Any temperature sensor can be configured to be automatically read and displayed to the CFA633-YYB-KS's LCD in °C or °F (see command [21: Set Up Live Fan or Temperature Display \(Pg. 29\)](#)). Independently, any temperature sensor can be configured to report to the host (see [19: Set Up Temperature Reporting \(Pg. 27\)](#)). Any sensors configured to be reported are updated once each second.

OTHER 1-WIRE DEVICES

Any other [Dallas Semiconductor 1-Wire devices](#) may be connected to the 1-Wire bus, with the CFA633-YYB-KS acting as a bridge between USB and the 1-Wire bus (see command [21: Set Up Live Fan or Temperature Display \(Pg. 29\)](#)). The total number of 1-Wire devices supported is 32, including directly supported temperature sensors and any other user-provided 1-Wire devices. (See CFA633-YYB-KS's DOW connection location in [Figure 8. on Pg. 16.](#))

The CFA633-YYB-KS has a 1 KΩ hardware pull-up on the DOW connector's I/O line.

Connect the 1-Wire sensors as detailed in the sensor's data sheet.

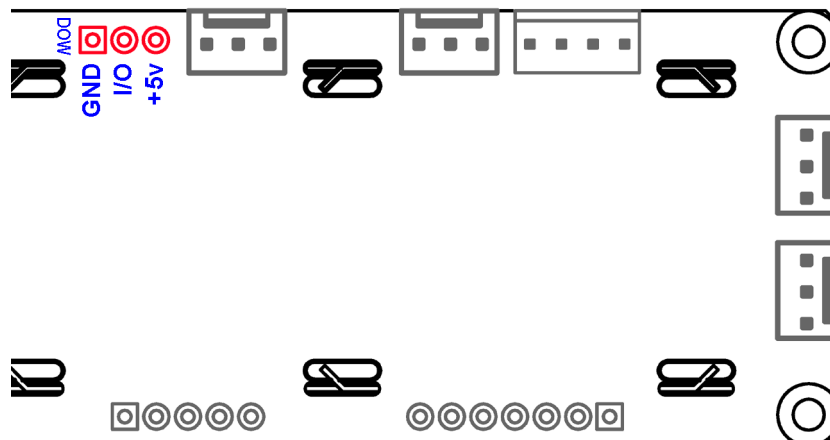


Figure 8. CFA633-YYB-KS connection for Dallas Semiconductor 1-wire (DOW) devices



HOST COMMUNICATIONS

CFA-633 communicates with its host using an RS-232 interface. The port settings are 19200 baud, 8 data bits, no parity, 1 stop bit by factory default. The speed can be set to 115200 baud under software control (see command [33: Set Baud Rate \(Pg. 36\)](#)).

PACKET STRUCTURE

All communication between the CFA-633 and the host takes place in the form of a simple and robust CRC checked packet. The packet format allows for very reliable communications between the CFA-633 and the host without the traditional problems that occur in a stream-based serial communication (such as having to send data in inefficient ASCII format, to “escape” certain “control characters”, or losing sync if a character is corrupted, missing, or inserted).

All packets have the following structure:

`<type><data_length><data><CRC>`

`type` is one byte, and identifies the type and function of the packet:

```
TTcc cccc
|||| |---Command, response, error or report code 0-63
|-----Type:
00 = normal command from host to CFA-633
01 = normal response from CFA-633 to host
10 = normal report from CFA-633 to host (not in
    direct response to a command from the host)
11 = error response from CFA-633 to host (a packet
    with valid structure but illegal content
    was received by the CFA-633)
```

`data_length` specifies the number of bytes that will follow in the data field. The valid range of `data_length` is 0 to 18.

`data` is the payload of the packet. Each `type` of packet will have a specified `data_length` and format for `data` as well as algorithms for decoding `data` detailed below.

`crc` is a standard 16-bit CRC of all the bytes in the packet except the CRC itself. The CRC is sent LSB first. At the port, the CRC immediately follows the last used element of data []. See [APPENDIX C: CALCULATING THE CRC \(Pg. 51\)](#) for details.

The following C definition may be useful for understanding the packet structure.

```
typedef struct
{
    unsigned char
        command;
    unsigned char
        data_length;
    unsigned char
        data[MAX_DATA_LENGTH];
    unsigned short
        CRC;
}COMMAND_PACKET;
```

On our website, CrystalFontz supplies a demonstration and test program, [633_WinTest](#) along with its C source code. Included in the 633_WinTest source is a CRC algorithm and an algorithm that detects packets. The algorithm will automatically re-synchronize to the next valid packet in the event of any communications errors. Please follow the algorithm in the sample code closely in order to realize the benefits of using the packet communications.



ABOUT HANDSHAKING

The nature of CFA-633's packets makes it unnecessary to implement traditional hardware or software handshaking.

The host should wait for a corresponding acknowledge packet from the CFA-633 before sending the next command packet. The CFA-633 will respond to all packets within 250 mS. The host software should stop waiting and retry the packet if the CFA-633 fails to respond within 250 mS. The host software should report an error if a packet is not acknowledged after several retries. This situation indicates a hardware problem—for example, a disconnected cable.

Please note that some operating systems may introduce delays between when the data arrives at the physical port from the CFA-633 until it is available to the user program. In this case, the host program may have to increase its timeout window to account for the additional overhead of the operating system.

The CFA-633 can be configured to send several types of report packets along with regular acknowledge packets. The host should be able to buffer several incoming packets and must guarantee that it can process and remove packets from its input buffer faster than the packets can arrive given the baud rate and the reporting configuration of the CFA-633. For any modern PC using reasonably efficient software, this requirement will not pose a challenge.

The report packets are sent asynchronously with respect to the command packets received from the host. The host should not assume that the first packet received after it sends a command is the acknowledge packet for that command. The host should inspect the `type` field of incoming packets and process them accordingly.

REPORT CODES

The CFA-633 can be configured to report three items. The CFA-633 sends reports automatically when the data becomes available. Reports are not sent in response to a particular packet received from the host. The three report types are:

0x80: Key Activity

If a key is pressed or released, the CFA-633 sends a Key Activity report packet to the host. Key event reporting may be individually enabled or disabled by command [23: Configure Key Reporting \(Pg. 30\)](#).

```
type = 0x80
data_length = 1
data[0] is the type of keyboard activity:
    KEY_UP_PRESS           1
    KEY_DOWN_PRESS        2
    KEY_LEFT_PRESS        3
    KEY_RIGHT_PRESS       4
    KEY_ENTER_PRESS       5
    KEY_EXIT_PRESS        6
    KEY_UP_RELEASE        7
    KEY_DOWN_RELEASE      8
    KEY_LEFT_RELEASE      9
    KEY_RIGHT_RELEASE     10
    KEY_ENTER_RELEASE     11
    KEY_EXIT_RELEASE      12
```

These codes are identical to the codes returned by the [CFA-635](#). Please note that the CFA-631 will return codes 13 through 20. (See the [CFA-631](#) Data Sheet on our website for more details).

0x81: Fan Speed Report

If any of up to four fans connected to CFA-633 is configured to report its speed information to the host, the CFA-633 will send Fan Speed Reports for each selected fan every 1/2 second. See command [16: Set Up Fan Reporting \(Pg. 25\)](#) below.



```

type = 0x81
data_length = 4
data[0] is the index of the fan being reported:
    0 = FAN 1
    1 = FAN 2
    2 = FAN 3
    3 = FAN 4
data[1] is number of fan tach cycles
data[2] is the MSB of Fan_Timer_Ticks
data[3] is the LSB of Fan_Timer_Ticks

```

The following C function will decode the fan speed from a Fan Speed Report packet into RPM:

```

int OnReceivedFanReport(COMMAND_PACKET *packet, char * output)
{
    int
        return_value;
    return_value=0;

    int
        number_of_fan_tach_cycles;
    number_of_fan_tach_cycles=packet->data[1];

    if(number_of_fan_tach_cycles<3)
        sprintf(output," STOP");
    else if(number_of_fan_tach_cycles<4)
        sprintf(output," SLOW");
    else if(0xFF==number_of_fan_tach_cycles)
        sprintf(output," ----");
    else
    {
        //Specific to each fan, most commonly 2
        int
            pulses_per_revolution;
        pulses_per_revolution=2;

        int
            Fan_Timer_Ticks;
        Fan_Timer_Ticks=(*(unsigned short *)(&(packet->data[2])));

        return_value=((27692308L/pulses_per_revolution)*
            (unsigned long)(number_of_fan_tach_cycles-3))/
            (Fan_Timer_Ticks);
        sprintf(output,"%5d",return_value);
    }
    return(return_value);
}

```

0x82: Temperature Sensor Report

If any of the up to 32 temperature sensors is configured to report to the host, the CFA-633 will send Temperature Sensor Reports for each selected sensor every second. See the command [19: Set Up Temperature Reporting \(Pg. 27\)](#) below.

```

type = 0x82
data_length = 4
data[0] is the index of the temperature sensor being reported:
    0 = temperature sensor 1
    1 = temperature sensor 2
    .
    .
    31 = temperature sensor 32
data[1] is the LSB of Temperature_Sensor_Counts
data[2] is the MSB of Temperature_Sensor_Counts
data[3] is DOW_crc_status

```



The following C function will decode the Temperature Sensor Report packet into °C and °F:

```
void OnReceivedTempReport(COMMAND_PACKET *packet, char *output)
{
    //First check the DOW CRC return code from the CFA-633
    if(packet->data[3]==0)
        strcpy(output, "BAD CRC");
    else
    {
        double
            degc;
        degc=(*(short *)&(packet->data[1]))/16.0;

        double
            degf;
        degf=(degc*9.0)/5.0+32.0;

        sprintf(output, "%9.4f°C =%9.4f°F",
                degc,
                degf);
    }
}
```

COMMAND CODES

Below is a list of valid commands for the CFA-633. Each command packet is answered by either a response packet or an error packet. The low 6 bits of the `type` field of the response or error packet is the same as the low 6 bits of the `type` field of the command packet being acknowledged.

0: Ping Command

The CFA-633 will return the Ping Command to the host.

```
type = 0
valid data_length is 0 to 16
data[0-(data_length-1)] can be filled with any arbitrary data
```

The return packet is identical to the packet sent, except the type will be 0x40 (normal response, Ping Command):

```
type = 0x40 | 0
data_length = (identical to received packet)
data[0-(data_length-1)] = (identical to received packet)
```

1: Get Hardware & Firmware Version

The CFA-633 will return the hardware and firmware version information to the host.

```
type = 1
valid data_length is 0
```

The return packet will be:

```
type = 0x40 | 1
data_length = 16
data[] = "CFA-633:hX.X,yY.Y"
```

X.X is the hardware revision, "1.5" for example
yY.Y is the firmware version, "v1.9" for example

2: Write User Flash Area

The CFA-633 reserves 16 bytes of nonvolatile memory for arbitrary use by the host. This memory can be used to store a serial number, IP address, gateway address, netmask, or any other data required. All 16 bytes must be supplied.



```
type = 2
valid data_length is 16
data[] = 16 bytes of arbitrary user data to be stored in
         the CFA-633's non-volatile memory
```

The return packet will be:

```
type = 0x40 | 2
data_length = 0
```

3: Read User Flash Area

This command will read the User Flash Area and return the data to the host.

```
type = 3
valid data_length is 0
```

The return packet will be:

```
type = 0x40 | 3
data_length = 16
data[] = 16 bytes user data recalled from the CFA-633's
         non-volatile memory
```

4: Store Current State As Boot State

The CFA-633 loads its power-up configuration from nonvolatile memory when power is applied. The CFA-633 is configured at the factory to display a "welcome screen" when power is applied. This command can be used to customize the welcome screen, as well as the following items:

- Characters shown on LCD, which are affected by:
 - command [6: Clear LCD Screen \(Pg. 22\)](#).
 - command [7: Set LCD Contents, Line 1 \(Pg. 23\)](#).
 - command [8: Set LCD Contents, Line 2 \(Pg. 23\)](#).
 - command [31: Send Data to LCD \(Pg. 36\)](#).
- Special character font definitions (command [9: Set LCD Special Character Data \(Pg. 23\)](#)).
- Cursor position (command [11: Set LCD Cursor Position \(Pg. 24\)](#)).
- Cursor style (command [12: Set LCD Cursor Style \(Pg. 24\)](#)).
- Contrast setting (command [13: Set LCD Contrast \(Pg. 25\)](#)).
- Backlight setting (command [14: Set LCD & Keypad Backlight \(Pg. 25\)](#)).
- Fan power settings (command [17: Set Fan Power \(Pg. 26\)](#)).
- Settings of any "live" displays (command [21: Set Up Live Fan or Temperature Display \(Pg. 29\)](#)).
- Key press and release masks (command [23: Configure Key Reporting \(Pg. 30\)](#)).
- Fan glitch delay settings (command [26: Set Fan Tachometer Glitch Filter \(Pg. 31\)](#)).
- ATX function enable and pulse length settings (command [28: Set ATX Power Switch Functionality \(Pg. 33\)](#)).
- Key legends (command [32: Reserved for CFA-631 Key Legends \(Pg. 36\)](#)).
- Baud rate (command [33: Set Baud Rate \(Pg. 36\)](#)).
- GPIO settings (command [34: Set or Set and Configure GPIO Pin \(Pg. 36\)](#)).

You cannot store the fan or temperature reporting (although the live display of fans or temperatures can be saved). You cannot store the fan fail-safe or host watchdog. The host software should enable these items once the system is initialized and it is ready to receive the data.

```
type = 4
valid data_length is 0
```



The return packet will be:

```
type = 0x40 | 4
data_length = 0
```

5: Reboot CFA-633, Reset Host, or Power Off Host

This command instructs the CFA-633 to simulate a power-on restart of itself, reset the host, or turn the host's power off. The ability to reset the host may be useful to allow certain host operating system configuration changes to complete. The ability to turn the host's power off under software control may be useful in systems that do not have ACPI compatible BIOS.

NOTE

The GPIO pins used for ATX control must not be configured as user GPIO, and must be configured to their default drive mode in order for the ATX functions to work correctly. These settings are factory default, but may be changed by the user. Please see command [34: Set or Set and Configure GPIO Pin \(Pg. 36\)](#).

Rebooting the CFA-633 may be useful when testing the boot configuration. It may also be useful to re-enumerate the devices on the 1-Wire bus. To reboot the CFA-633, send the following packet:

```
type = 5
valid data_length is 3
data[0] = 8
data[1] = 18
data[2] = 99
```

To reset the host, assuming the host's reset line is connected to GPIO[3] as described in command [28: Set ATX Power Switch Functionality \(Pg. 33\)](#), send the following packet:

```
type = 5
valid data_length is 3
data[0] = 12
data[1] = 28
data[2] = 97
```

To turn the host's power off, assuming the host's power control line is connected to GPIO[2] as described in command [28: Set ATX Power Switch Functionality \(Pg. 33\)](#), send the following packet:

```
type = 5
valid data_length is 3
data[0] = 3
data[1] = 11
data[2] = 95
```

In any of the above cases, the return packet will be:

```
type = 0x40 | 5
data_length = 0
```

6: Clear LCD Screen

Sets the contents of the LCD screen DDRAM to ' ' = 0x20 = 32 and moves the cursor to the left-most column of the top line.

```
type = 6
valid data_length is 0
```

The return packet will be:

```
type = 0x40 | 6
data_length = 0
```




Clear LCD Screen is one of the items stored by the command [4: Store Current State As Boot State \(Pg. 21\)](#).

7: Set LCD Contents, Line 1

Sets the center 16 characters displayed for the top line of LCD screen.

Please use this command only if you need backwards compatibility with older CFA-633 units. For new applications, please use the more flexible command [31: Send Data to LCD \(Pg. 36\)](#) which is also supported by the CFA-631 and CFA-635.

```
type = 7
valid data_length is 16
data[] = top line's display content (must supply 16 bytes)
```

The return packet will be:

```
type = 0x40 | 7
data_length = 0
```

Set LCD Contents, Line 1 is one of the items stored by the command [4: Store Current State As Boot State \(Pg. 21\)](#).

8: Set LCD Contents, Line 2

Sets the center 16 characters displayed for the bottom line of LCD screen.

Please use this command only if you need backwards compatibility with older CFA-633 units. For new applications, please use the more flexible command [31: Send Data to LCD \(Pg. 36\)](#) which is also supported by the CFA-631 and CFA-635.

```
type = 8
valid data_length is 16
data[] = top line's display content (must supply 16 bytes)
```

The return packet will be:

```
type = 0x40 | 8
data_length = 0
```

Set LCD Contents, Line 2 is one of the items stored by the command [4: Store Current State As Boot State \(Pg. 21\)](#).

9: Set LCD Special Character Data

Sets the font definition for one of the special characters (CGRAM).

```
type = 9
valid data_length is 9
data[0] = index of special character that you would like
         to modify, 0-7 are valid
data[1-8] = bitmap of the new font for this character
```

`data[1-8]` are the bitmap information for this character. Any value is valid between 0 and 63, the msb is at the left of the character cell of the row, and the lsb is at the right of the character cell. `data[1]` is at the top of the cell, `data[8]` is at the bottom of the cell.

The return packet will be:

```
type = 0x40 | 9
data_length = 0
```

Set LCD Special Character Data is one of the items stored by the command [4: Store Current State As Boot State \(Pg. 21\)](#).



10: Read 8 Bytes of LCD Memory

This command will return the contents of the LCD's DDRAM or CGRAM. This command is intended for debugging.

Note: firmware version prior to v1.9 did not return the address code.

```
type = 10
valid data_length is 1
data[0] = address code of desired data

data[0] is the address code native to the LCD controller:
    0x40 (\064) to 0x7F (\127) for CGRAM
    0x80 (\128) to 0x93 (\147) for DDRAM, line 1
    0xC0 (\192) to 0xD3 (\211) for DDRAM, line 2
```

The return packet will be:

```
type = 0x40 | 10
data_length = 9

data[0] of the return packet will be the address code.
data[1-8] of the return packet will be the data read from the LCD controller's memory.
```

11: Set LCD Cursor Position

This command allows the cursor to be placed at the desired location on the CFA-633's LCD screen. If you want the cursor to be visible, you may also need to send a command [12: Set LCD Cursor Style \(Pg. 24\)](#).

```
type = 11
valid data_length is 2
data[0] = column (0-19 valid)
data[1] = row (0-3 valid)
```

The return packet will be:

```
type = 0x40 | 11
data_length = 0
```

Set LCD Cursor Position is one of the items stored by the command [4: Store Current State As Boot State \(Pg. 21\)](#).

12: Set LCD Cursor Style

This command allows you to select among four hardware generated cursor options.

```
type = 12
valid data_length is 1
data[0] = cursor style (0-3 valid)
    0 = no cursor
    1 = blinking block cursor
    2 = underscore cursor
    3 = blinking block plus underscore
```

The return packet will be:

```
type = 0x40 | 12
data_length = 0
```

Set LCD Cursor Style is one of the items stored by the command [4: Store Current State As Boot State \(Pg. 21\)](#).

13: Set LCD Contrast

This command sets the contrast or vertical viewing angle of the display.

```
type = 13
valid data length is 1
data[0] = contrast setting (0-50 valid)
0 = light (Vlcd=4v)
16 = about right (Vlcd=5v)
29 = dark (Vlcd=6v)
30-50 = very dark (Vlcd=6.0 to 6.7v)
(may be useful at cold temperatures)
```

The return packet will be:

```
type = 0x40 | 13
data length = 0
```

Set LCD Contrast is one of the items stored by the command [4: Store Current State As Boot State \(Pg. 21\)](#).

14: Set LCD & Keypad Backlight

This command sets the brightness of the LCD and keypad backlights.

```
type = 14
valid data_length is 1
data[0] = backlight power setting (0-100 valid)
    0 = off
    1-99 = variable brightness
    100 = on
```

The return packet will be:

```
type = 0x40 | 14
data length = 0
```

Set LCD & Keypad Backlight is one of the items stored by the command [4: Store Current State As Boot State \(Pg. 21\)](#).

15: (Deprecated)

16: Set Up Fan Reporting

This command will configure the CFA-633 to report the fan speed information to the host every 500 mS.

```

type = 16
valid data length is 1
data[0] = bitmask indicating which fans are enabled to
report (0-15 valid)
---- 8421 Enable Reporting of this Fan's Tach Input
|||||  |||| -- Fan 1: 1 = enable, 0 = disable
|||||  |||| --- Fan 2: 1 = enable, 0 = disable
|||||  |||| ---- Fan 3: 1 = enable, 0 = disable
|||||  |||| ----- Fan 4: 1 = enable, 0 = disable

```

The return packet will be:

```
type = 0x40 | 16
data length = 0
```

If `data[0]` is not 0, then the CFA-633 will start sending 0x81: Fan Speed Report packets for each enabled fan every 500 mS. (See [0x81: Fan Speed Report \(Pg. 18\)](#).) Each of the report packets is staggered by 1/8 of a second.



Reporting a fan will override the fan power setting to 100% for up to 1/8 of a second every 1/2 second. Please see Fan Connections in [FAN CONNECTIONS \(Pg. 14\)](#) for a detailed description.

17: Set Fan Power

This command will configure the power for the fan connectors. The fan power setting is one of the items stored by the command [4: Store Current State As Boot State \(Pg. 21\)](#).

```
type = 17
valid data_length is 4
data[0] = power level for FAN 1 (0-100 valid)
data[1] = power level for FAN 2 (0-100 valid)
data[2] = power level for FAN 3 (0-100 valid)
data[3] = power level for FAN 4 (0-100 valid)
```

The return packet will be:

```
type = 0x40 | 17
data_length = 0
```

Set Fan Power is one of the items stored by the command [4: Store Current State As Boot State \(Pg. 21\)](#).

18: Read DOW Device Information

When power is applied to the CFA-633, it detects any devices connected to the Dallas Semiconductor 1-Wire (DOW) bus and stores the device's information. This command will allow the host to read the device's information.

The first byte returned is the Family Code of the Dallas 1-Wire / iButton device. There is a list of the possible Dallas 1-Wire / iButton device family codes available in [App Note 155: 1-Wire Software Resource Guide](#) on the Maxim/Dallas website.

NOTE ON COMMAND 18: READ DOW DEVICE INFORMATION

The GPIO pin used for DOW must not be configured as user GPIO. It must be configured to its default drive mode in order for the DOW functions to work correctly.

These settings are factory default but may be changed by the user. Please see command [34: Set or Set and Configure GPIO Pin \(Pg. 36\)](#).

In order for the DOW subsystem to be enabled and operate correctly, user GPIO[4] must be configured as:

```
DDD = "111: 1=Hi-Z, 0=Slow, Strong Drive Down".
F = "0: Port unused for user GPIO."
```

This state is the factory default, but it can be changed and saved by the user. To ensure that GPIO[4] is set correctly and the DOW operation is enabled, send the following command:

```
command = 34
length = 3
data[0] = 4
data[1] = 100
data[2] = 7
```

This setting must be saved as the boot state, so when the CFA-633 reboots it will detect the DOW devices.

```
type = 18
valid data_length is 1
data[0] = device index (0-31 valid)
```



The return packet will be:

```
type = 0x40 | 18
data_length = 9
data[0] = device index (0-31 valid)
data[1-8] = ROM ID of the device
```

If data[1] is 0x22 ([DS1822](#) Econo 1-Wire Digital Thermometer temperature sensor) or 0x28 ([DS18B20](#) High Precision 1-Wire Digital Thermometer temperature sensor), then that device can be set up to automatically convert and report the temperature every second. See the command [19: Set Up Temperature Reporting \(Pg. 27\)](#).

19: Set Up Temperature Reporting

This command will configure the CFA-633 to report the temperature information to the host every second.

```
type = 19
valid data_length is 4
data[0-3] = 32-bit bitmask indicating which temperature
            sensors fans are enabled to report (0-255
            valid in each location)
```

```
data[0]
08 07 06 05 04 03 02 01 Enable Reporting of sensor with
| | | | | | | | device index of:
| | | | | | | | -- 0: 1 = enable, 0 = disable
| | | | | | | | ---- 1: 1 = enable, 0 = disable
| | | | | | | | ----- 2: 1 = enable, 0 = disable
| | | | | | | | ----- 3: 1 = enable, 0 = disable
| | | | | | | | ----- 4: 1 = enable, 0 = disable
| | | | | | | | ----- 5: 1 = enable, 0 = disable
| | | | | | | | ----- 6: 1 = enable, 0 = disable
| | | | | | | | ----- 7: 1 = enable, 0 = disable
```

```
data[1]
16 15 14 13 12 11 10 09 Enable Reporting of sensor with
| | | | | | | | device index of:
| | | | | | | | -- 8: 1 = enable, 0 = disable
| | | | | | | | ---- 9: 1 = enable, 0 = disable
| | | | | | | | ----- 10: 1 = enable, 0 = disable
| | | | | | | | ----- 11: 1 = enable, 0 = disable
| | | | | | | | ----- 12: 1 = enable, 0 = disable
| | | | | | | | ----- 13: 1 = enable, 0 = disable
| | | | | | | | ----- 14: 1 = enable, 0 = disable
| | | | | | | | ----- 15: 1 = enable, 0 = disable
```

```
data[2]
24 23 22 21 20 19 18 17 Enable Reporting of sensor with
| | | | | | | | device index of:
| | | | | | | | -- 16: 1 = enable, 0 = disable
| | | | | | | | ---- 17: 1 = enable, 0 = disable
| | | | | | | | ----- 18: 1 = enable, 0 = disable
| | | | | | | | ----- 19: 1 = enable, 0 = disable
| | | | | | | | ----- 20: 1 = enable, 0 = disable
| | | | | | | | ----- 21: 1 = enable, 0 = disable
| | | | | | | | ----- 22: 1 = enable, 0 = disable
| | | | | | | | ----- 23: 1 = enable, 0 = disable
```

(Continues on the next page.)



```

data[3]
32 31 30 29 28 27 26 25 Enable Reporting of sensor with
                        device index of:
                        -- 24: 1 = enable, 0 = disable
                        ---- 25: 1 = enable, 0 = disable
                        ----- 26: 1 = enable, 0 = disable
                        ----- 27: 1 = enable, 0 = disable
                        ----- 28: 1 = enable, 0 = disable
                        ----- 29: 1 = enable, 0 = disable
                        ----- 30: 1 = enable, 0 = disable
                        ----- 31: 1 = enable, 0 = disable

```

Any sensor enabled must have been detected as a 0x22 (DS1822 temperature sensor) or 0x28 (DS18B20 temperature sensor) during DOW enumeration. This can be verified by using the command [18: Read DOW Device Information \(Pg. 26\)](#).

The return packet will be:

```

type = 0x40 | 19
data_length = 0

```

20: Arbitrary DOW Transaction

The CFA-633 can function as a RS-232 to Dallas 1-Wire bridge. This command allows you to specify arbitrary transactions on the 1-Wire bus. 1-Wire commands follow this basic layout:

```

<bus reset          //Required
<address_phase>    //Must be "Match ROM" or "Skip ROM"
<write_phase>      //optional, but at least one of write_phase or read_phase must be sent
<read_phase>       //optional, but at least one of write_phase or read_phase must be sent

```

Please see [APPENDIX A: CONNECTING A DS2450 1-WIRE QUAD A/D CONVERTER \(Pg. 46\)](#) for an example of using this command.

```

type = 20
valid data_length is 2 to 16
data[0] = device_index (0-32 valid)
data[1] = number_of_bytes_to_read (0-14 valid)
data[2-15] = data_to_be_written[data_length-2]

```

If `device_index` is 32, then no address phase will be executed. If `device_index` is in the range of 0 to 31, and a 1-Wire device was detected for that `device_index` at power on, then the write cycle will be prefixed with a "Match ROM" command and the address information for that device.

If `data_length` is two, then no specific write phase will be executed (although address information may be written independently of `data_length` depending on the value of `device_index`).

If `data_length` is greater than two, then `data_length-2` bytes of `data_to_be_written` will be written to the 1-Wire bus immediately after the address phase.

If `number_of_bytes_to_read` is zero, then no read phase will be executed. If `number_of_bytes_to_read` is not zero then `number_of_bytes_to_read` will be read from the bus and loaded into the response packet.

The return packet will be:

```

type = 0x40 | 20
data_length = 2 to 16
data[0] = device_index (0-31 valid)
data[data_length-2] = Data read from the 1-Wire bus. This is the same
                    as number_of_bytes_to_read from the command.
data[data_length-1] = 1-Wire CRC

```



21: Set Up Live Fan or Temperature Display

You can configure the CFA-633 to automatically update a portion of the LCD with a "live" RPM or temperature reading. Once the display is configured using this command, the CFA-633 will continue to display the live reading on the LCD without host intervention. The Set Up Live Fan or Temperature Display is one of the items stored by command [4: Store Current State As Boot State \(Pg. 21\)](#), so you can configure the CFA-633 to immediately display fan speeds or system temperatures as soon as power is applied.

The live display is based on a concept of display slots. There are 8 slots, and each of the 8 slots may be enabled or disabled independently.

Any slot may be requested to display any data that is available. For instance, slot 0 could display temperature sensor 3 in °C, while slot 1 could simultaneously display temperature sensor 3 in °F.

Any slot may be positioned at any location on the LCD, as long as all the digits of that slot fall fully within the display area. It is legal to have the display area of one slot overlap the display area of another slot, but senseless. This situation should be avoided in order to have meaningful information displayed.

```
type = 21
valid data_length is 7 or 2 (for turning a slot off)
data[0]: display slot (0-7)
data[1]: type of item to display in this slot
         0 = nothing (data_length then must be 2)
         1 = fan tachometer RPM (data_length then must be 7)
         2 = temperature (data_length then must be 7)
data[2]: index of the sensor to display in this slot:
         0-3 are valid for fans
         0-31 are valid for temperatures (and the temperature
         device must be attached)
data[3]: number of digits
         for a fan: 4 digits (0 to 9999) valid fan speed range
         for a fan: 5 digits (0 to 50000) valid fan speed range
         for a temperature: 3 digits ( -XX or XXX)
         for a temperature: 5 digits (-XX.X or XXX.X)
data[4]: display column
         0-13 valid for a 3-digit temperature
         0-12 valid for a 4-digit fan
         0-11 valid for a 5-digit fan or temperature
data[5]: display row (0-1 valid)
data[6]: pulses_per_revolution or temperature units
         for a fan: pulses per revolution for this fan (1 to 32)
         for a temperature: units (0 = deg C, 1 = deg F)
```

If a 1-Wire CRC error is detected, the temperature will be displayed as "ERR" or "ERROR".

If the frequency of the tachometer signal is below the detectable range, the speed will be displayed as "SLOW" or "STOP".

Displaying a fan will override the fan power setting to 100% for up to 1/8 of a second every 1/2 second. Please see [FAN CONNECTIONS \(Pg. 14\)](#) for a detailed description.

The return packet will be:

```
type = 0x40 | 21
data_length = 0
```

22: Send Command Directly to the LCD Controller

The LCD controller on the CFA-633 is S6A0073 compatible. Generally you won't need low-level access to the LCD controller but some arcane functions of the S6A0073 are not exposed by the CFA-633's command set. This command



allows you to access the CFA-633's LCD controller directly. Note: It is possible to corrupt the CFA-633 display using this command.

```
type = 22
data_length = 2
data[0]: location code
    0 = "Data" register
    1 = "Control" register
data[1]: data to write to the selected register
```

The return packet will be:

```
type = 0x40 | 22
data_length = 0
```

23: Configure Key Reporting

By default, the CFA-633 reports any key event to the host. This command allows the key events to be enabled or disabled on an individual basis. The key events set to report are one of the items stored by the command [4: Store Current State As Boot State \(Pg. 21\)](#).

```
#define KP_UP      0x01
#define KP_ENTER   0x02
#define KP_CANCEL  0x04
#define KP_LEFT    0x08
#define KP_RIGHT   0x10
#define KP_DOWN    0x20

type = 23
data_length = 2
data[0]: press mask
data[1]: release mask
```

The return packet will be:

```
type = 0x40 | 23
data_length = 0
```

Configure Key Reporting is one of the items stored by the command [4: Store Current State As Boot State \(Pg. 21\)](#).

24: Read Keypad, Polled Mode

In some situations, it may be convenient for the host to poll the CFA-633 for key activity. This command allows the host to detect which keys are currently pressed, which keys have been pressed since the last poll, and which keys have been released since the last poll.

This command is independent of the key reporting masks set by command [23: Configure Key Reporting \(Pg. 30\)](#). All keys are always visible to this command. Typically both masks of command 23 would be set to "0" if the host is reading the keypad in polled mode.

```
#define KP_UP      0x01
#define KP_ENTER   0x02
#define KP_CANCEL  0x04
#define KP_LEFT    0x08
#define KP_RIGHT   0x10
#define KP_DOWN    0x20

type = 24
data_length = 0
```




The return packet will be:

```
type = 0x40 | 24
data_length = 3
data[0] = bit mask showing the keys currently pressed
data[1] = bit mask showing the keys that have been pressed since
           the last poll
data[2] = bit mask showing the keys that have been released since
           the last poll
```

25: Set Fan Power Fail-Safe

The combination of the CFA-633 can be used as part of an active cooling system. For instance, the fans in a system can be slowed down to reduce noise when a system is idle or when the ambient temperature is low, and sped up when the system is under heavy load or the ambient temperature is high.

Since there are a very large number of ways to control the speed of the fans (thresholds, thermostat, proportional, PID, multiple temperature sensors “contributing” to the speed of several fans . . .) there was no way to foresee the particular requirements of your system and include an algorithm in the CFA-633’s firmware that would be an optimal fit for your application.

Varying fan speeds under host software control gives the ultimate flexibility in system design but would typically have a fatal flaw: a host software or hardware failure could cause the cooling system to fail. If the fans were set at a slow speed when the host software failed, system components may be damaged due to inadequate cooling.

The fan power fail-safe command allows host control of the fans without compromising safety. When the fan control software activates, it should set the fans that are under its control to fail-safe mode with an appropriate timeout value. If for any reason the host fails to update the power of the fans before the timeout expires, the fans previously set to fail-safe mode will be forced to 100% power.

```
#define FAN_1      0x01
#define FAN_2      0x02
#define FAN_3      0x04
#define FAN_4      0x08

type = 25
data_length = 2
data[0] = bit mask of fans set to fail-safe
data[1] = timeout value in 1/8 second ticks:
    1 = 1/8 second
    2 = 1/4 second
    255 = 31 7/8 seconds
```

The return packet will be:

```
type = 0x40 | 25
data_length = 0
```

26: Set Fan Tachometer Glitch Filter

The CFA-633 controls fan speed by using PWM. Using PWM turns the power to a fan on and off quickly to change the average power delivered to the fan. The CFA-633 uses approximately 18 Hz for the PWM repetition rate. The fan’s tachometer output is only valid if power is applied to the fan. Most fans produce a valid tachometer output very quickly after the fan has been turned back on but some fans take time after being turned on before their tachometer output is valid.

This command allows you to set a variable-length delay after the fan has been turned on before the CFA-633 will recognize transitions on the tachometer line. The delay is specified in counts, each count being nominally 552.5 μ S long (1/100 of one period of the 18 Hz PWM repetition rate).



In practice, most fans will not need the delay to be changed from the default length of 1 count. If a fan's tachometer output is not stable when its PWM setting is other than 100%, simply increase the delay until the reading is stable. Typically you would (1) start at a delay count of 50 or 100, (2) reduce it until the problem reappears, and then (3) slightly increase the delay count to give it some margin.

Setting the glitch delay to higher values will make the RPM monitoring slightly more intrusive at low power settings. Also, the higher values will increase the lowest speed that a fan with RPM reporting enabled will "seek" at "0%" power setting.

The Fan Glitch Delay is one of the items stored by the command [4: Store Current State As Boot State \(Pg. 21\)](#).

```
type = 26
data_length = 4
data[0] = delay count of fan 1
data[1] = delay count of fan 2
data[2] = delay count of fan 3
data[3] = delay count of fan 4
```

The return packet will be:

```
type = 0x40 | 26
data_length = 0
```

27: Query Fan Power & Fail-Safe Mask

This command can be used to verify the current fan power and verify which fans are set to fail-safe mode.

```
#define FAN_1      0x01
#define FAN_2      0x02
#define FAN_3      0x04
#define FAN_4      0x08

type = 27
data_length = 0
```

The return packet will be:

```
type = 0x40 | 27
data_length = 5
data[0] = fan 1 power
data[1] = fan 2 power
data[2] = fan 3 power
data[3] = fan 4 power
data[4] = bit mask of fans with fail-safe set
```



28: Set ATX Power Switch Functionality

The combination of the CFA-633 with the optional [WRPWRY14](#) cable can be used to replace the function of the power and reset switches in a standard ATX-compatible system. The ATX Power Switch Functionality is one of the items stored by the command [4: Store Current State As Boot State \(Pg. 21\)](#).

NOTE ON COMMAND 28: SET ATX POWER SWITCH FUNCTIONALITY

The GPIO pins used for ATX control must not be configured as user GPIO. The pins must be configured to their default drive mode in order for the ATX functions to work correctly.

These settings are factory default but may be changed by the user. Please see command [34: Set or Set and Configure GPIO Pin \(Pg. 36\)](#). These settings must be saved as the boot state.

To ensure that GPIO[1] will operate correctly as ATX SENSE, user GPIO[1] must be configured as:

```
DDD = "011: 1=Resistive Pull Up, 0=Fast, Strong Drive Down".  
F = "0: Port unused for user GPIO."
```

This configuration can be assured by sending the following command:

```
command = 34  
length = 3  
data[0] = 1  
data[1] = 0  
data[2] = 3
```

To ensure that GPIO[2] will operate correctly as ATX POWER, user GPIO[2] must be configured as:

```
DDD = "010: Hi-Z, use for input".  
F = "0: Port unused for user GPIO."
```

This configuration can be assured by sending the following command:

```
command = 34  
length = 3  
data[0] = 2  
data[1] = 0  
data[2] = 2
```

To ensure that GPIO[3] will operate correctly as ATX RESET, user GPIO[3] must be configured as:

```
DDD = "010: Hi-Z, use for input".  
F = "0: Port unused for user GPIO."
```

This configuration can be assured by sending the following command:

```
command = 34  
length = 3  
data[0] = 3  
data[1] = 0  
data[2] = 2
```

These settings must be saved as the boot state.

The RESET (GPIO[3]) and POWER CONTROL (GPIO[2]) lines on the CFA-633 are normally high-impedance—electrically, they appear to be disconnected or floating. When the CFA-633 asserts the RESET or POWER_CONTROL lines, they are momentarily driven high or low (as determined by the RESET_INVERT and POWER_INVERT bits, detailed below). To end the power or reset pulse, the CFA-633 changes the lines back to high-impedance.



FOUR FUNCTIONS ENABLED BY COMMAND 28

Function 1: KEYPAD_RESET

If POWER-ON SENSE (GPIO[1]) is high, holding the green check key for 4 seconds will pulse RESET (GPIO[3]) pin for 1 second. During the 1-second pulse, the CFA-633 will show "RESET", and then the CFA-633 will reset itself, showing its boot state as if it had just powered on. Once the pulse has finished, the CFA-633 will not respond to any commands until after it has reset the host and itself.

Function 2: KEYPAD_POWER_ON

If POWER-ON SENSE (GPIO[1]) is low, pressing the green check key for 0.25 seconds will pulse POWER CONTROL (GPIO[2]) for the duration specified by in data[1] or the default of 1 second. During this time the CFA-633 will show "POWER ON", then the CFA-633 will reset itself.

Function 3: KEYPAD_POWER_OFF

If POWER-ON SENSE (GPIO[1]) is high, holding the red "X" key for 4 seconds will pulse POWER CONTROL (GPIO[2]) for the duration specified by in data[1] or the default of 1 second. If the user continues to hold the power key down, then the CFA-633 will continue to drive the line for a maximum of 5 additional seconds. During this time the CFA-633 will show "POWER OFF".

Function 4: LCD_OFF_IF_HOST_IS_OFF

If LCD_OFF_IF_HOST_IS_OFF is set, the CFA-633 will blank its screen and turn off its backlight to simulate its power being off any time POWER-ON SENSE (GPIO[1]) is low. The CFA-633 will still be active (since it is powered by V_{SB}), monitoring the keypad for a power-on keystroke. If +12v remains active (which would not be expected, since the host is "off"), the fans will remain on at their previous settings. Once POWER-ON SENSE (GPIO[1]) goes high, the CFA-633 will reboot as if power had just been applied to it.

```
#define RESET_INVERT          0x02 //Reset pin drives high instead of low
#define POWER_INVERT         0x04 //Power pin drives high instead of low
#define LCD_OFF_IF_HOST_IS_OFF 0x10
#define KEYPAD_RESET         0x20
#define KEYPAD_POWER_ON      0x40
#define KEYPAD_POWER_OFF     0x80

type = 28
data_length = 1 or 2
data[0]: bit mask of enabled functions
data[1]: (optional) length of power on & off pulses in 1/32 second
        1 = 1/32 sec
        2 = 1/16 sec
        16 = 1/2 sec
        255 = 8 sec
```

The return packet will be:

```
type = 0x40 | 28
data_length = 0
```

29: Enable/Disable and Reset the Watchdog

Some high-availability systems use hardware watchdog timers to ensure that a software or hardware failure does not result in an extended system outage. Once the host system has booted, a system monitor program is started. The



system monitor program would enable the watchdog timer on the CFA-633. If the system monitor program fails to reset the CFA-633's watchdog timer, the CFA-633 will reset the host system.

NOTE

The GPIO pins used for ATX control must not be configured as user GPIO. They must be configured to their default drive mode in order for the ATX functions to work correctly. These settings are factory default, but may be changed by the user. Please see the note under command [28: Set ATX Power Switch Functionality \(Pg. 33\)](#) or command [34: Set or Set and Configure GPIO Pin \(Pg. 36\)](#).

```
type = 29
data_length = 1
data[0] = enable/timeout
```

If timeout is 0, the watchdog is disabled.

If timeout is 1-255, then this command must be issued again within timeout seconds to avoid a watchdog reset.

To turn the watchdog off once it has been enabled, simply set timeout to 0.

If the command is not re-issued within timeout seconds, then the CFA-633 will reset the host (see command 28 for details). Since the watchdog is off by default when the CFA-633 powers up, the CFA-633 will not issue another host reset until the host has once again enabled the watchdog.

The return packet will be:

```
type = 0x40 | 29
data_length = 0
```

30: Read Reporting & Status

This command can be used to verify the current items configured to report to the host, as well as some other miscellaneous status information.

```
type = 30
data_length = 0
```

The return packet will be:

```
type = 0x40 | 30
data_length = 15
data[0] = fan 1-4 reporting status (as set by command 16)
data[1] = temperatures 1-8 reporting status (as set by command 19)
data[2] = temperatures 9-15 reporting status (as set by command 19)
data[3] = temperatures 16-23 reporting status (as set by command 19)
data[4] = temperatures 24-32 reporting status (as set by command 19)
data[5] = key presses (as set by command 23)
data[6] = key releases (as set by command 23)
data[7] = ATX Power Switch Functionality (as set by command 28), and
        bit 0x08 will be set if the watchdog is active
data[8] = current watchdog counter (as set by command 29)
data[9] = fan RPM glitch delay[0] (as set by command 26)
data[10] = fan RPM glitch delay[1] (as set by command 26)
data[11] = fan RPM glitch delay[2] (as set by command 26)
data[12] = fan RPM glitch delay[3] (as set by command 26)
data[13] = contrast setting (as set by command 13)
data[14] = backlight setting (as set by command 14)
```

Please Note: Previous and future firmware versions may return fewer or additional bytes.



31: Send Data to LCD

This command allows data to be placed at any position on the LCD.

```
type = 31
data_length = 3 to 18
data[0]: col = x = 0 to 15
data[1]: row = y = 0 to 1
data[2-21]: text to place on the LCD, variable from 1 to 16 characters
```

The return packet will be:

```
type = 0x40 | 31
data_length = 0
```

Send Data to LCD is one of the items stored by the command [4: Store Current State As Boot State \(Pg. 21\)](#).

32: Reserved for CFA-631 Key Legends

33: Set Baud Rate

This command will change the CFA-633's baud rate. The CFA-633 will send the acknowledge packet for this command and change its baud rate to the new value. The host should send the baud rate command, wait for a positive acknowledge from the CFA-633 at the old baud rate, and then switch itself to the new baud rate. The baud rate must be saved by the command [4: Store Current State As Boot State \(Pg. 21\)](#) if you want the CFA-633 to power up at the new baud rate.

The factory default baud rate is 19200.

```
type = 33
data_length = 1
data[1]: 0 = 19200 baud
         1 = 115200 baud
```

The return packet will be:

```
type = 0x40 | 33
data_length = 0
```

34: Set or Set and Configure GPIO Pin

The CFA-633 (hardware versions v1.4 and up, firmware versions 1.9 and up) has five pins for user-definable general purpose input / output (GPIO). These pins are shared with the DOW and ATX functions. Be careful when you configure the GPIO if you want to use the ATX or DOW at the same time.

The architecture of the CFA-633 allows great flexibility in the configuration of the GPIO pins. They can be set as input or output. They can output constant high or low signals or a variable duty cycle 100 Hz PWM signal.

In output mode using the PWM (and a suitable current limiting resistor), an LED may be turned on or off and even dimmed under host software control. With suitable external circuitry, the GPIOs can also be used to drive external logic or power transistors.

The CFA-633 continuously polls the GPIOs as inputs at 32 Hz. The present level can be queried by the host software at a lower rate. The CFA-633 also keeps track of whether there were rising or falling edges since the last host query (subject to the resolution of the 32 Hz sampling). This means that the host is not forced to poll quickly in order to detect short events. The algorithm used by the CFA-633 to read the inputs is inherently "bounce-free".



The GPIOs also have “pull-up” and “pull-down” modes. These modes can be useful when using the GPIO as an input connected to a switch since no external pull-up or pull-down resistor is needed. For instance, the GPIO can be set to pull up. Then when a switch connected between the GPIO and ground is open, reading the GPIO will return a “1”. When the switch is closed, the input will return a “0”.

Pull-up/pull-down resistance values are approximately 5k Ω . Do not exceed current of 25 mA per GPIO.

NOTE ON SETTING AND CONFIGURING GPIO PINS

The GPIO pins may also be used for ATX control through header J8 and temperature sensing through the CFA-633's DOW header. By factory default, the GPIO output setting, function, and drive mode are set correctly to enable operation of the ATX and DOW functions. **The GPIO output setting, function, and drive mode must be set to the correct values in order for the ATX and DOW functions to work. Improper use of this command can disable the ATX and DOW functions.** The [633 WinTest](#) may be used to easily check and reset the GPIO configuration to the default state so the ATX and DOW functions will work.

The GPIO configuration is one of the items stored by the command [4: Store Current State As Boot State \(Pg. 21\)](#).

```
type: 34
data_length:
  2 bytes to change value only
  3 bytes to change value and configure function and drive mode

data[0]: index of GPIO to modify
  0 = GPIO[0] = J8, Pin 7
  1 = GPIO[1] = J8, Pin 6 (default is ATX Host Power Sense)
  2 = GPIO[2] = J8, Pin 5 (default is ATX Host Power Control)
  3 = GPIO[3] = J8, Pin 4 (default is ATX Host Reset Control)
  4 = GPIO[4] = J9, Pin 2 (default is DOW I/O--always has 1 K $\Omega$  hardware pull-up)

5-255: reserved

Please note: Future versions of this command on future
hardware models may accept additional values for data[0],
which would control the state of future additional GPIO
pins
```

(Continues on the next page.)



```
data[1] = Pin output state (actual behavior depends on drive mode):
    0 = Output set to low
    1-99: Output duty cycle percentage (100 Hz nominal)
    100 = Output set to high
    101-255: invalid

data[2] = Pin function select and drive mode (optional)
---- FDDD
||| -- DDD = Drive Mode (based on output state of 1 or 0)
=====
000: 1=Fast, Strong Drive Up, 0=Resistive Pull Down
001: 1=Fast, Strong Drive Up, 0=Fast, Strong Drive Down
010: Hi-Z, use for input
011: 1=Resistive Pull Up,      0=Fast, Strong Drive Down
100: 1=Slow, Strong Drive Up, 0=Hi-Z
101: 1=Slow, Strong Drive Up, 0=Slow, Strong Drive Down
110: reserved, do not use
111: 1=Hi-Z,                  0=Slow, Strong Drive Down

----- F = Function
=====
0: Port unused for GPIO. It will take on the default
   function such as ATX, DOW or unused. The user is
   responsible for setting the drive to the correct
   value in order for the default function to work
   correctly.
1: Port used for GPIO under user control. The user is
   responsible for setting the drive to the correct
   value in order for the desired GPIO mode to work
   correctly.
----- reserved, must be 0
```

The return packet will be:

```
type = 0x40 | 34
data_length = 0
```

35: Read GPIO Pin Levels and Configuration State

Please see command [34: Set or Set and Configure GPIO Pin \(Pg. 36\)](#) for details on the GPIO architecture.

```
type: 35
data_length: 4

data[0]: index of GPIO to query
    0 = GPIO[0] = J8, Pin 7
    1 = GPIO[1] = J8, Pin 6 (default is ATX Host Power Sense)
    2 = GPIO[2] = J8, Pin 5 (default is ATX Host Power Control)
    3 = GPIO[3] = J8, Pin 4 (default is ATX Host Reset Control)
    4 = GPIO[4] = J9, Pin 2 (default is DOW I/O--always has 1KΩ
                           hardware pull-up)
    5-255: reserved
```

Please note: Future versions of this command on future hardware models may accept additional values for data[0], which would return the status of future additional GPIO pins

(Continues on the next page.)


```

returns:
data[0] = index of GPIO read
data[1] = Pin state & changes since last poll
---- -RFS Enable Reporting of this Fan's Tach Input
||||| | | | -- S = state at the last reading
||||| | | | --- F = at least one falling edge has
||||| | | |         been detected since the last poll
||||| | | | ---- R = at least one rising edge has
||||| | | |         been detected since the last poll
||||| | | | ----- reserved

(This reading is the actual pin state, which may
or may not agree with the pin setting, depending
on drive mode and the load presented by external
circuitry. The pins are polled at approximately
32 Hz asynchronously with respect to this command.
Transients that happen between polls will not be
detected.)

data[2] = Requested Pin level/PWM level
0-100: Output duty cycle percentage
(This value is the requested PWM duty cycle. The
actual pin may or may not be toggling in agreement
with this value, depending on the drive mode and
the load presented by external circuitry)

data[3] = Pin function select and drive mode
---- FDDD
||||| | | | -- DDD = Drive Mode
||||| | | | =====
||||| | | | 000: 1=Fast, Strong Drive Up, 0=Resistive Pull Down
||||| | | | 001: 1=Fast, Strong Drive Up, 0=Fast, Strong Drive Down
||||| | | | 010: Hi-Z, use for input
||||| | | | 011: 1=Resistive Pull Up, 0=Fast, Strong Drive Down
||||| | | | 100: 1=Slow, Strong Drive Up, 0=Hi-Z
||||| | | | 101: 1=Slow, Strong Drive Up, 0=Slow, Strong Drive Down
||||| | | | 110: reserved
||||| | | | 111: 1=Hi-Z, 0=Slow, Strong Drive Down

---- F = Function
---- F =====
0: Port unused for GPIO. It will take on the default
function such as ATX, DOW or unused. The user is
responsible for setting the drive to the correct
value in order for the default function to work
correctly.

1: Port used for GPIO under user control. The user is
responsible for setting the drive to the correct
value in order for the desired GPIO mode to work
correctly.

----- reserved, will return 0

```



CHARACTER GENERATOR ROM (CGROM)

To find the code for a given character, add the two numbers that are shown in bold for its row and column. For example, the superscript "9" is in the column labeled "128_d" and in the row labeled "9_d". So you would add 128 + 9 to get 137. When you send a byte with the value of 137 to the display, then a superscript "9" will be shown.

<div>upper 4 bits lower 4 bits</div>	0_d 0000 ₂	16_d 0001 ₂	32_d 0010 ₂	48_d 0011 ₂	64_d 0100 ₂	80_d 0101 ₂	96_d 0110 ₂	112_d 0111 ₂	128_d 1000 ₂	144_d 1001 ₂	160_d 1010 ₂	176_d 1011 ₂	192_d 1100 ₂	208_d 1101 ₂	224_d 1110 ₂	240_d 1111 ₂
0_d 0000 ₂	CGRAM [0]															
1_d 0001 ₂	CGRAM [1]															
2_d 0010 ₂	CGRAM [2]															
3_d 0011 ₂	CGRAM [3]															
4_d 0100 ₂	CGRAM [4]															
5_d 0101 ₂	CGRAM [5]															
6_d 0110 ₂	CGRAM [6]															
7_d 0111 ₂	CGRAM [7]															
8_d 1000 ₂	CGRAM [0]															
9_d 1001 ₂	CGRAM [1]															
10_d 1010 ₂	CGRAM [2]															
11_d 1011 ₂	CGRAM [3]															
12_d 1100 ₂	CGRAM [4]															
13_d 1101 ₂	CGRAM [5]															
14_d 1110 ₂	CGRAM [6]															
15_d 1111 ₂	CGRAM [7]															

Figure 9. Character Generator ROM (CGROM)



CFA-633 MODULE OUTLINE DRAWING

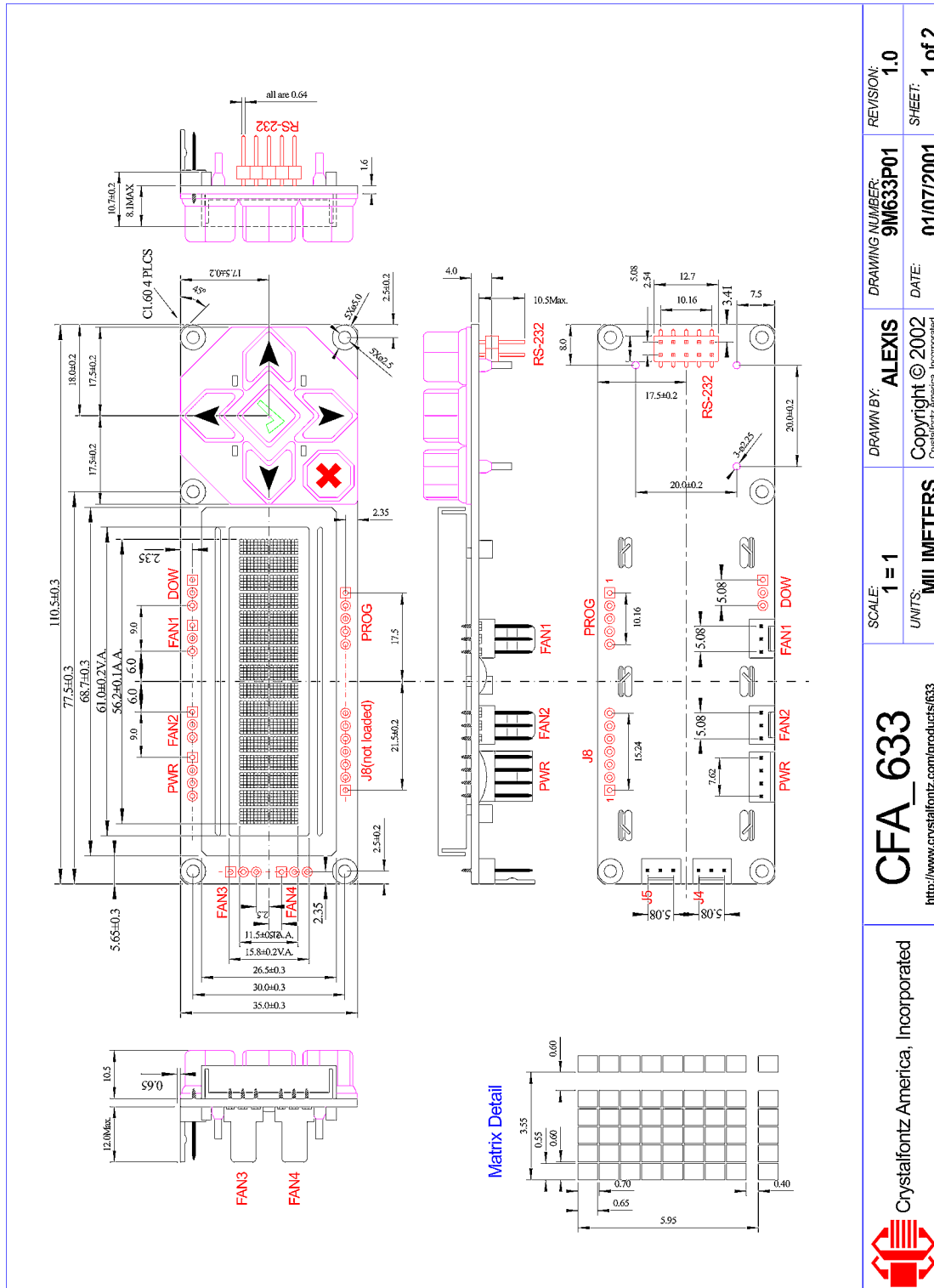


Figure 10. CFA-633 Module Outline Drawing (HW v1.5a identical to v1.0)



CFA-633 KEYPAD OUTLINE DRAWING

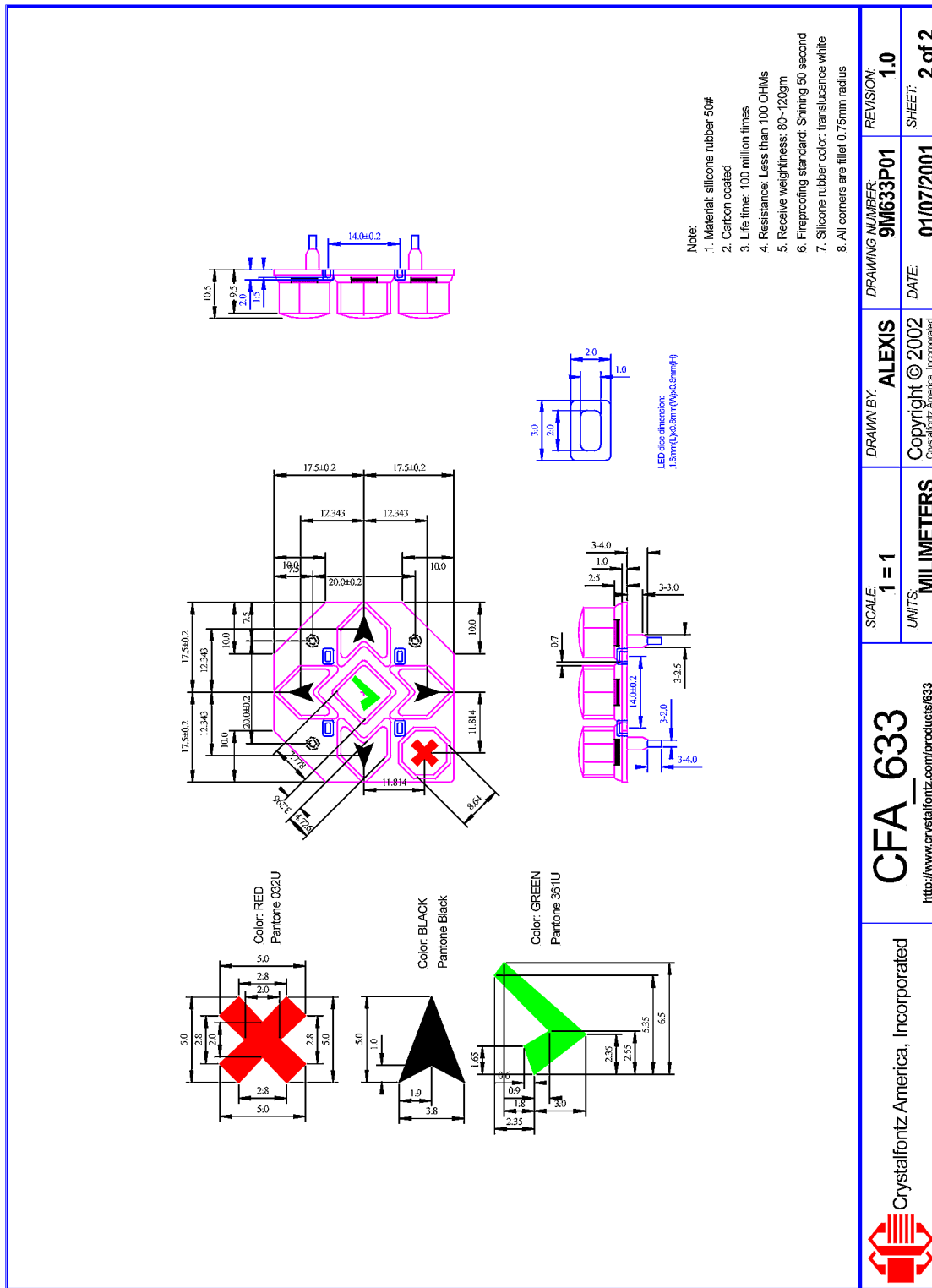


Figure 11. CFA-633 Keypad Outline Drawing (v1.5a identical to v1.0)



JUMPER LOCATIONS AND FUNCTIONS

The CFA-633 has twenty-one jumpers. JP1 through JP 13 and JP18 may be changed. The jumpers are normally open. The jumpers may be closed by melting a ball of solder across their gap. You may re-open the jumpers by removing the solder. Solder wick works well for this.

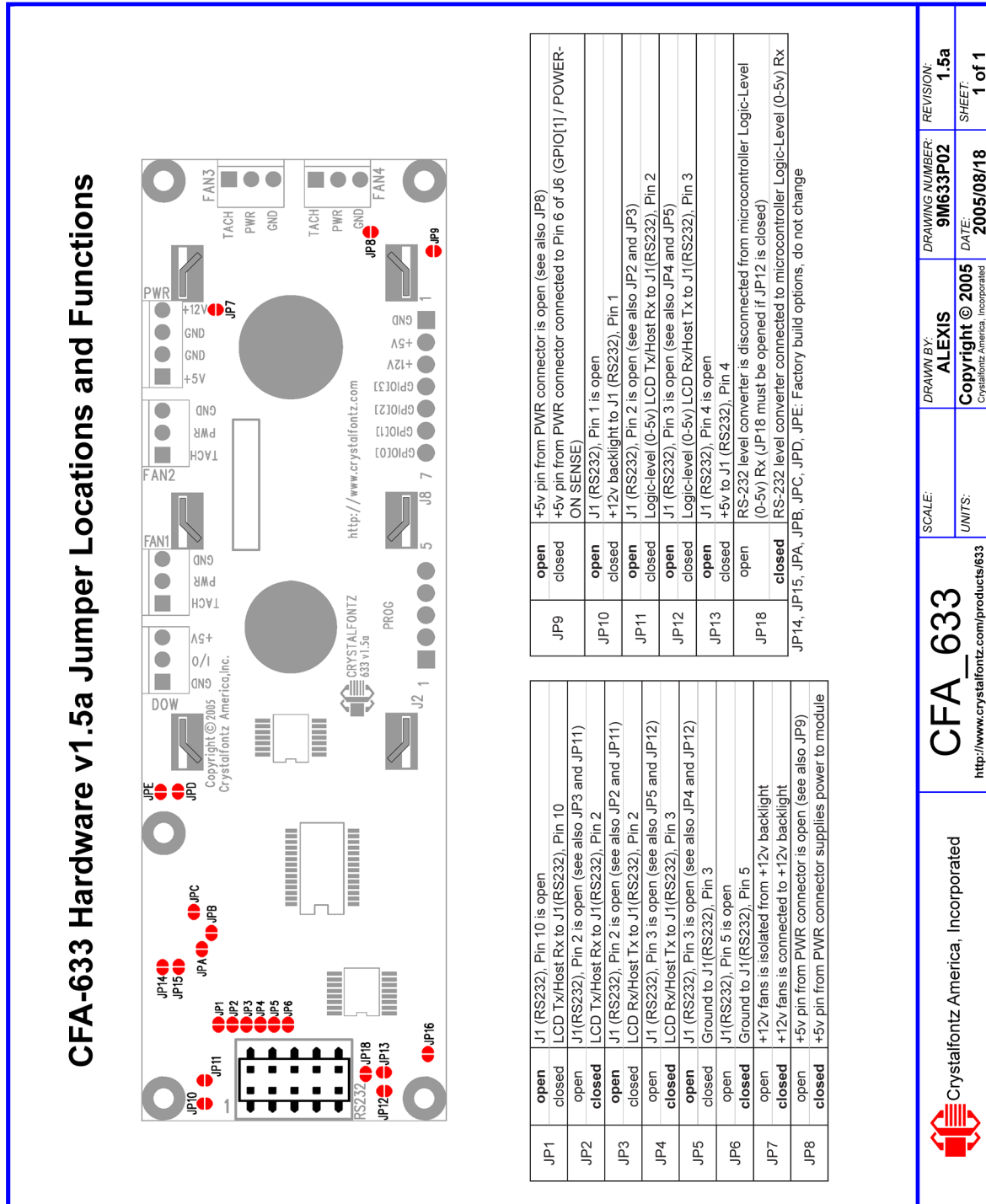


Figure 12. CFA-633 Jumper Locations and Functions



CARE AND HANDLING PRECAUTIONS

For optimum operation of the CFA633-YYB-KS and to prolong its life, please follow the precautions described below.

ELECTROSTATIC DISCHARGE (ESD)

Please use industry standard antistatic precautions as you would for any other PCB such as expansion cards or motherboards. Ground your body, work surfaces, and equipment.

DESIGN AND MOUNTING

- To protect the polarizer from damage, the CFA633-YYB-KS ships with a protective film over the LCD glass. Please peel off the protective film slowly. Peeling off the protective film abruptly may generate static electricity.
- If you are not using a Crystalfontz overlay, place a transparent plate (for example, acrylic, polycarbonate, or glass) in front of the CFA633-YYB-KS, leaving a small gap between the plate and the display surface. We use GE HP-92 Lexan, which is readily available and works well.
- Do not disassemble or modify the CFA633-YYB-KS. Solder only to the I/O terminals.
- Do not reverse polarity to the power supply connections. Reversing the polarity will immediately ruin the module.

AVOID SHOCK, IMPACT, TORQUE, AND TENSION

- Do not expose the CFA633-YYB-KS to strong mechanical shock, impact, torque, and tension.
- Do not drop, toss, bend, or twist the CFA633-YYB-KS.
- Do not place weight or pressure on the CFA633-YYB-KS.

IF LCD PANEL BREAKS

- If the LCD panel breaks, be careful to not get the liquid crystal fluid in your mouth or eyes.
- If the liquid crystal fluid touches your skin, clothes, or work surface, wash it off immediately using soap and plenty of water.
- Do not eat the LCD panel.

CLEANING

- To clean the front of the LCD, a standard household glass cleaner works well. Gently wipe with a nonabrasive soft cloth.
- *CFA633-YYB-KS without Crystalfontz overlay*: The exposed surface of the LCD “glass” is actually the front polarizer laminated to the glass. The polarizer is made out of a fairly soft plastic and is easily scratched or damaged. The polarizer will eventually become hazy if you do not take great care when cleaning it. Long contact with moisture (from condensation or cleaning) may permanently spot or stain the polarizer.



OPERATION

- Your circuit should be designed to protect the CFA633-YYB-KS from ESD and power supply transients.
- Observe the operating temperature limitations: a minimum of 0°C to a maximum of 50°C with minimal fluctuation. Operation outside of these limits may shorten life and/or harm display.
 - At lower temperatures of this range, response time is delayed.
 - At higher temperatures of this range, display becomes dark. (You may need to adjust the contrast.)
- Operate away from dust, moisture, and direct sunlight.

STORAGE

- Store in an ESD-approved container away from dust, moisture, and direct sunlight.
- -10°C minimum, 60°C maximum with minimal fluctuation. Rapid temperature changes can cause moisture to form, resulting in permanent damage.
- Do not allow weight to be placed on the CFA633-YYB-KSs while they are in storage.

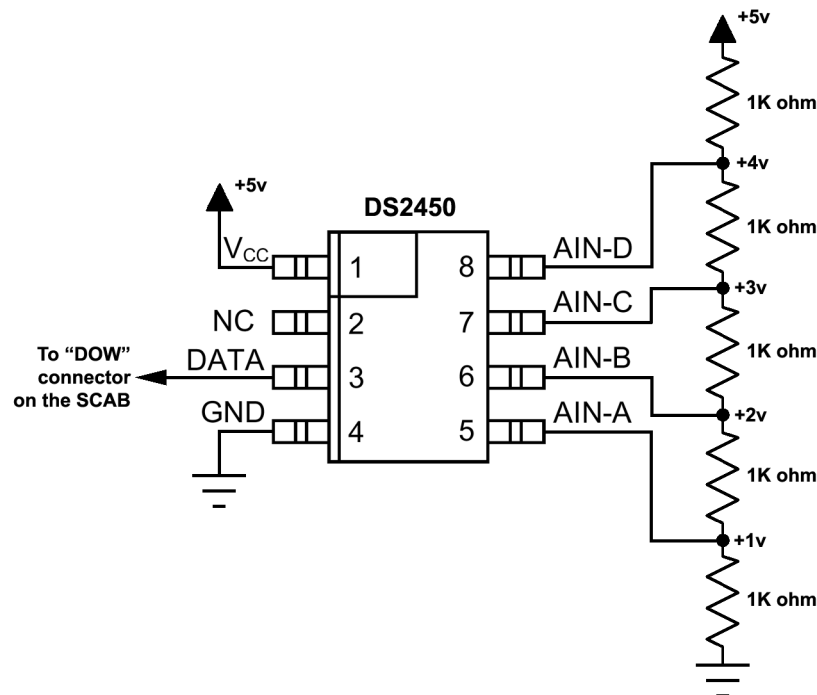


APPENDIX A: CONNECTING A DS2450 1-WIRE QUAD A/D CONVERTER

This appendix describes a simple test circuit that demonstrates how to connect a Dallas Semiconductor DS2450 4-channel ADC to the CFA-633's "DOW" (Dallas One Wire) connector. It also gives a sample command sequence to initialize and read the ADC.

Up to 32 DOW devices can be connected to the CFA-633. In this example the DS2450 appears at device index 0. Your software should query the connected devices using command [18: Read DOW Device Information \(Pg. 26\)](#) to verify the locations and types of DOW devices connected in your application.

Please refer to the [DS2450 Data Sheet](#) and the description for command [20: Arbitrary DOW Transaction \(Pg. 28\)](#) more information.



Appendix A Figure 1. CFA-633 Test Circuit Schematic

Start [633 WinTest](#) and open the Packet Debugger dialog.

Select Command 20 = Arbitrary DOW Transaction, then paste each string below into the data field and send the packet. The response should be similar to what is shown.



```
//Write 0x40 (=64) to address 0x1C (=28) to leave analog circuitry on
//(see page 6 of the data sheet)
<command 20> \000\002\085\028\000\064
<response> C=84(d=0):2E,05,22 //16 bit "i-button" CRC + 8-bit "DOW" CRC
//Consult "i-button" docs to check 16-bit CRC
//DOW CRC is probably useless for this device.

//Write all 8 channels of control/status (16 bits, 5.10v range)
<command 20> \000\002\085\008\000\000 // address = 8, channel A low
<response> C=84(d=0):6F,F1,68 // 16-bits, output off

<command 20> \000\002\085\009\000\001 // address = 9, channel A high
<response> C=84(d=0):FF,F1,AB // no alarms, 5.1v

<command 20> \000\002\085\010\000\000 // address = 10, channel B low
<response> C=84(d=0):CE,31,88 // 16-bits, output off

<command 20> \000\002\085\011\000\001 // address = 11, channel B high
<response> C=84(d=0):5E,31,4B // no alarms, 5.1v

<command 20> \000\002\085\012\000\000 // address = 12, channel C low
<response> C=84(d=0):2E,30,A3 // 16-bits, output off

<command 20> \000\002\085\013\000\001 // address = 13, channel C high
<response> C=84(d=0):BE,30,60 // no alarms, 5.1v

<command 20> \000\002\085\014\000\000 // address = 14, channel D low
<response> C=84(d=0):8F,F0,43 // 16-bits, output off

<command 20> \000\002\085\015\000\001 // address = 15, channel D high
<response> C=84(d=0):1F,F0,80 // no alarms, 5.1v

//Read all 4 channels of control/status (check only)
<command 20> \000\010\170\008\000
<response> C=84(d=0):00,01,00,01,00,01,00,01,E0,CF,01

//Repeat next two commands for each conversion (two cycles shown)

//Start conversion on all channels
<command 20> \000\002\060\015\000
<response> C=84(d=0):3A,03,28

//Read all 8 channels
<command 20> \000\010\170\000\000
<response> C=84(d=0):00,33,DF,64,84,96,6A,C8,5A,6B,BE

//Decoded response:
0x3300 = 130561.016015625 volts (channel A)
0x64DF = 258232.009541321 volts (channel B)
0x9684 = 385322.998553467 volts (channel C)
0xC86A = 513063.992623901 volts (channel D)

//Start conversion on all channels
<command 20> \000\002\060\015\000
<response> C=84(d=0):3A,03,28

//Read all 8 channels
<command 20> \000\010\170\000\000
<response> C=84(d=0):6B,33,B2,64,97,96,42,C8,0F,C9,0A

//Decoded response:
0x336B = 131631.024342346 volts (channel A)
0x64B2 = 257782.006039429 volts (channel B)
0x9697 = 385513.000032043 volts (channel C)
0xC842 = 512663.989511108 volts (channel D)
```



APPENDIX B: CONNECTING A DS1963S SHA IBUTTON

This appendix describes connecting a Dallas Semiconductor DS1963S Monetary iButton with SHA-1 Challenge Response Algorithm and 4KB of nonvolatile RAM to the CFA-633's DOW (Dallas One Wire) connector. It also gives a sample command sequence to read and write the DS1963S's scratch memory.

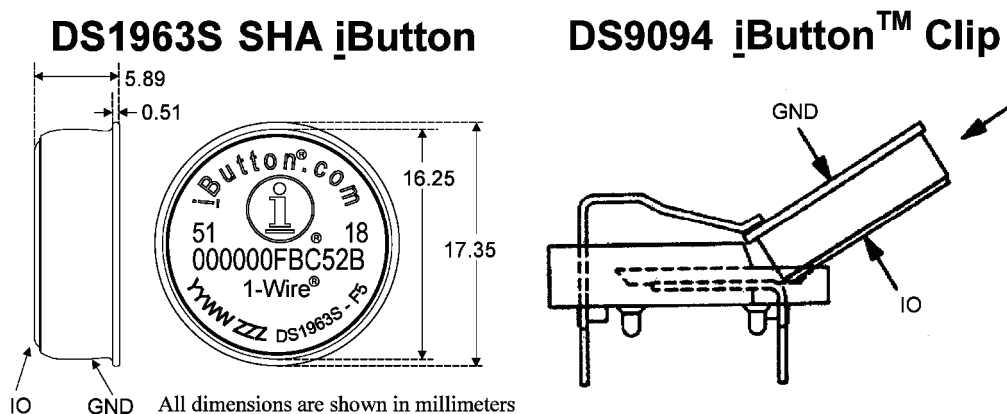
The DS1963S can be used as a secure dongle to protect your system's application software from being copied. Even if the communication channel is compromised or the host is not authentic, the SHA algorithm ensures that the data is still secure. Please see the following Maxim/Dallas white papers and application notes for more information:

- [White Paper 1: SHA Devices Used in Small Cash Systems](#)
- [White Paper 2: Using the 1-Wire Public-Domain Kit](#)
- [White Paper 3: Why are 1-Wire SHA-1 Devices Secure?](#)
- [White Paper 4: Glossary of 1-Wire SHA-1 Terms](#)
- [App Note 1201: White Paper 8: 1-Wire SHA-1 Overview](#)
- [App Note 150: Small Message Encryption using SHA Devices](#)
- [App Note 152: SHA iButton Secrets and Challenges](#)
- [App Note 154: Passwords in SHA Authentication](#)
- [App Note 156: DS1963S SHA 1-Wire API Users Guide](#)
- [App Note 157: SHA iButton API Overview](#)
- [App Note 190: Challenge and Response with 1-Wire SHA devices](#)

Up to 32 DOW devices can be connected to the CFA-633. In this example the DS1963S appears at device index 0. Your software should query the connected devices using command [19: Set Up Temperature Reporting \(Pg. 27\)](#) to verify the locations and types of DOW devices connected in your application.

Please refer to the [DS1963S Data Sheet](#) and the description for command [20: Arbitrary DOW Transaction \(Pg. 28\)](#) for more information.

To connect the DS1963S to the CFA-633, simply make one connection between the DS1963S's "GND" terminal and the CFA-633 DOW connector's GND pin, and a second connection between the DS1963S's "IO" pin and the CFA-633 DOW connector's I/O pin. By using a DS9094 iButton Clip, the connection is easy.



Appendix B Figure 1. Connect CFA-633 to Maxim/Dallas DS19632 SHA iButton using DS9094 iButton Clip



To demonstrate reading and writing the scratch memory on DS1963S, open the [633_WinTest](#) Packet Debugger dialog and use it to experiment with the following commands: Erase Scratchpad, Read Scratchpad, and Write Scratchpad.

To use the full power of the DS1963S, a program based on the Dallas/Maxim application notes listed above is needed. The challenge/response sequence would be unwieldy to demonstrate using the 633_WinTest Packet Debugger dialog.

First read the address of the DS1963S as detected by the CFA-633 at boot. Since only one device is connected, you only need to query index 0. In a production situation, query all 32 indices to get a complete picture of the devices available on the DOW bus.

```
Command:
  18 = Read DOW Device Information
Data sent:
  \000
Data received:
  C=82 (d=0):18,CC,D2,19;00,00,00,9E
```

The first byte returned is the Family Code of the Dallas One Wire / iButton device. 0x18 indicates that this device is a DS1963. A list of the possible Dallas One Wire / iButton device family codes is available in [App Note 155: 1-Wire Software Resource Guide](#) on the Maxim/Dallas website.

Erase Scratchpad Command (quote from the Maxim/Dallas [DS1963S Data Sheet](#)):

Erase Scratchpad [C3h]

The purpose of this command is to clear the HIDE flag and to wipe out data that might have been left in the scratchpad from a previous operation. After having issued the command code the bus master transmits a target address, as with the write scratchpad command, but no data. Next the whole scratchpad will be automatically filled with FFh bytes, regardless of the target address. This process takes approximately 32 μ s during which the master reads 1's. After this the master reads a pattern of alternating 0's and 1's indicating that the command has completed. The master must read at least 8 bits of this alternating pattern. Otherwise the device might not properly respond to a subsequent Reset Pulse.

```
Command:
  20 = Arbitrary DOW transaction
Data sent:
  \000\014\xC3\000\000
Data received:
  C=84 (d=0):FF,AA,AA,AA,AA,AA,AA,AA,AA,AA,AA,AA,AA,AA,AA,9F
```

The "AA" bytes read are the pattern of alternating 0's and 1's indicating that the command has completed.

Read Scratchpad Command (quote from the Maxim/Dallas [DS1963S Data Sheet](#))

Read Scratchpad Command [AAh]

HIDE = 0:

The Read Scratchpad command allows verifying the target address, ending offset and the integrity of the scratchpad data. After issuing the command code the master begins reading. The first 2 bytes will be the target address. The next byte will be the ending offset/data status byte (E/S) followed by the scratchpad data beginning at the byte offset (T4: T0). The master may read data until the end of the scratchpad after which it will receive the inverted CRC generated by the DS1963S. If the master continues reading after the CRC all data will be logic 1's.

```
Command:
  20 = Arbitrary DOW transaction
Data sent:
  \000\014\xAA
Data received:
  C=84 (d=0):00,00,1F,FF,FF,FF,FF,FF,FF,FF,FF,FF,FF,FF,07
```

Since you did an "Erase Scratchpad" as the previous command, the "Read Scratchpad" returns 0xFF bytes as expected.



Write Scratchpad Command (quote from the Maxim/Dallas [DS1963S Data Sheet](#))

Write Scratchpad Command [0Fh]

HIDE = 0, Target Address range 0000h to 01FFh only

After issuing the write scratchpad command, the master must first provide the 2-byte target address, followed by the data to be written to the scratchpad. The data will be written to the scratchpad starting at the byte offset (T4:T0). The ending offset (E4:E0) will be the byte offset at which the master stops writing data. Only full data bytes are accepted. If the last data byte is incomplete its content will be ignored and the partial byte flag PF will be set.

When executing the Write Scratchpad command the CRC generator inside the DS1963S (see Figure 12) calculates a CRC of the entire data stream, starting at the command code and ending at the last data byte sent by the master. This CRC is generated using the CRC16 polynomial by first clearing the CRC generator and then shifting in the command code (0FH) of the Write Scratchpad command, the Target Addresses TA1 and TA2 as supplied by the master and all the data bytes. The master may end the Write Scratchpad command at any time. However, if the ending offset is 11111b, the master may send 16 read time slots and will receive the CRC generated by the DS1963S.

Write 10 bytes of identifiable test data {0x11, 0x22, 0x33, 0x44, 0x55, 0x66, 0x77, 0x88, 0x99, 0xAA} to the scratch pad in location 0:0

```
Command:
  20 = Arbitrary DOW transaction
Data sent:
  \000\000\x0F\x00\x00\x11\x22\x33\x44\x55\x66\x77\x88\x99\xAA
Data received:
  C=84 (d=0):00
```

Use the Read Scratchpad Command [AAh] to read back the data.

```
Command:
  20 = Arbitrary DOW transaction
Data sent:
  \000\013\xAA
Data received:
  C=84 (d=0):00,00,09,11,22,33,44,55,66,77,88,99,AA,1E
```

Now write 10 bytes of identifiable test data {0x12, 0x23, 0x34, 0x45, 0x56, 0x67, 0x78, 0x89, 0x9A, 0xAB} to the scratch pad in location 0:0x0A

```
Command:
  20 = Arbitrary DOW transaction
Data sent:
  \000\000\x0F\x0A\x00\x12\x23\x34\x45\x56\x67\x78\x89\x9A\xAB
Data received:
  C=84 (d=0):00
```

Use the Read Scratchpad Command [AAh] to read back the data.

```
Command:
  20 = Arbitrary DOW transaction
Data sent:
  \000\013\xAA
Data received:
  C=84 (d=0):00,02,09,12,23,34,45,56,67,78,89,9A,AB,62
```

Reading and writing to the scratch pad is the first step required to communicate with the DS1863S. In order to fully use the DS1963S for a dongle application that securely protects your software from copying, become familiar with the SHA algorithm as it applies to the SHA iButton by studying the Maxim/Dallas white papers and application notes listed above. Then create a software application that implements the secure challenge/response protocol as outlined in the application notes.



APPENDIX C: CALCULATING THE CRC

Below are five sample algorithms that will calculate the CRC of a CFA-633 packet. Some of the algorithms were contributed by forum members and originally written for the CFA-631. The CRC used in the CFA-633 is the same one that is used in IrDA, which came from PPP, which to at least some extent seems to be related to a CCITT (ref: Network Working Group Request for Comments: 1171) standard. At that point, the trail was getting a bit cold and diverged into several referenced articles and papers, dating back to 1983.

The polynomial used is $X^{16} + X^{12} + X^5 + X^0$ (0x8408)
The result is bit-wise inverted before being returned.

ALGORITHM 1: "C" TABLE IMPLEMENTATION

This algorithm is typically used on the host computer, where code space is not an issue.

```
//This code is from the IRDA LAP documentation, which appears to
//have been copied from PPP:
//
// http://irda.affiniscape.com/associations/2494/files/Specifications/
IrLAP11_Plus_Errata.zip
//
//I doubt that there are any worries about the legality of this code,
//searching for the first line of the table below, it appears that
//the code is already included in the linux 2.6 kernel "Driver for
//ST5481 USB ISDN modem". This is an "industry standard" algorithm
//and I do not think there are ANY issues with it at all.
word get_crc(ubyte *bufptr, word len)
{
    //CRC lookup table to avoid bit-shifting loops.
    static const word crcLookupTable[256] =
    {
        0x00000, 0x01189, 0x02312, 0x0329B, 0x04624, 0x057AD, 0x06536, 0x074BF,
        0x08C48, 0x09DC1, 0x0AF5A, 0x0BED3, 0x0CA6C, 0x0DBE5, 0x0E97E, 0x0F8F7,
        0x01081, 0x00108, 0x03393, 0x0221A, 0x056A5, 0x0472C, 0x075B7, 0x0643E,
        0x09CC9, 0x08D40, 0x0BFDB, 0x0AE52, 0x0DAED, 0x0CB64, 0x0F9FF, 0x0E876,
        0x02102, 0x0308B, 0x00210, 0x01399, 0x06726, 0x076AF, 0x04434, 0x055BD,
        0x0AD4A, 0x0BCC3, 0x08E58, 0x09FD1, 0x0EB6E, 0x0FAE7, 0x0C87C, 0x0D9F5,
        0x03183, 0x0200A, 0x01291, 0x00318, 0x077A7, 0x0662E, 0x054B5, 0x0453C,
        0x0BDCB, 0x0AC42, 0x09ED9, 0x08F50, 0x0FBEF, 0x0EA66, 0x0D8FD, 0x0C974,
        0x04204, 0x0538D, 0x06116, 0x0709F, 0x0420, 0x015A9, 0x02732, 0x036BB,
        0x0CE4C, 0x0DFC5, 0x0ED5E, 0x0FCD7, 0x08868, 0x099E1, 0x0AB7A, 0x0BAF3,
        0x05285, 0x0430C, 0x07197, 0x0601E, 0x014A1, 0x00528, 0x037B3, 0x0263A,
        0x0DECD, 0x0CF44, 0x0FDDF, 0x0EC56, 0x098E9, 0x08960, 0x0BBFB, 0x0AA72,
        0x06306, 0x0728F, 0x04014, 0x0519D, 0x02522, 0x034AB, 0x00630, 0x017B9,
        0x0EF4E, 0x0FEC7, 0x0CC5C, 0x0DDD5, 0x0A96A, 0x0B8E3, 0x08A78, 0x09BF1,
        0x07387, 0x0620E, 0x05095, 0x0411C, 0x035A3, 0x0242A, 0x016B1, 0x00738,
        0x0FFCF, 0x0EE46, 0x0DCDD, 0x0CD54, 0x0B9EB, 0x0A862, 0x09AF9, 0x08B70,
        0x08408, 0x09581, 0x0A71A, 0x0B693, 0x0C22C, 0x0D3A5, 0x0E13E, 0x0F0B7,
        0x00840, 0x019C9, 0x02B52, 0x03ADB, 0x04E64, 0x05FED, 0x06D76, 0x07CFF,
        0x09489, 0x08500, 0x0B79B, 0x0A612, 0x0D2AD, 0x0C324, 0x0F1BF, 0x0E036,
        0x018C1, 0x00948, 0x03BD3, 0x02A5A, 0x05EE5, 0x04F6C, 0x07DF7, 0x06C7E,
        0x0A50A, 0x0B483, 0x08618, 0x09791, 0x0E32E, 0x0F2A7, 0x0C03C, 0x0D1B5,
        0x02942, 0x038CB, 0x00A50, 0x01BD9, 0x06F66, 0x07EEF, 0x04C74, 0x05DFD,
        0x0B58B, 0x0A402, 0x09699, 0x08710, 0x0F3AF, 0x0E226, 0x0D0BD, 0x0C134,
        0x039C3, 0x0284A, 0x01AD1, 0x00B58, 0x07FE7, 0x06E6E, 0x05CF5, 0x04D7C,
        0x0C60C, 0x0D785, 0x0E51E, 0x0F497, 0x08028, 0x091A1, 0x0A33A, 0x0B2B3,
        0x04A44, 0x05BCD, 0x06956, 0x078DF, 0x00C60, 0x01DE9, 0x02F72, 0x03EFB,
        0x0D68D, 0x0C704, 0x0F59F, 0x0E416, 0x090A9, 0x08120, 0x0B3BB, 0x0A232,
        0x05AC5, 0x04B4C, 0x079D7, 0x0685E, 0x01CE1, 0x00D68, 0x03FF3, 0x02E7A,
        0x0E70E, 0x0F687, 0x0C41C, 0x0D595, 0x0A12A, 0x0B0A3, 0x08238, 0x093B1,
        0x06B46, 0x07ACF, 0x04854, 0x059DD, 0x02D62, 0x03CEB, 0x00E70, 0x01FF9,
        0x0F78F, 0x0E606, 0x0D49D, 0x0C514, 0x0B1AB, 0x0A022, 0x092B9, 0x08330,
```



```
0x07BC7, 0x06A4E, 0x058D5, 0x0495C, 0x03DE3, 0x02C6A, 0x01EF1, 0x00F78};

register word
newCrc;
newCrc=0xFFFF;
//This algorithm is based on the IrDA LAP example.
while(len--)
    newCrc = (newCrc >> 8) ^ crcLookupTable[(newCrc ^ *bufptr++) & 0xff];

//Make this crc match the one's complement that is sent in the packet.
return(~newCrc);
}
```

ALGORITHM 2: "C" BIT SHIFT IMPLEMENTATION

This algorithm was mainly written to avoid any possible legal issues about the source of the routine (at the request of the LCDproc group). This routine was "clean" coded from the definition of the CRC. It is ostensibly smaller than the table driven approach but will take longer to execute. This routine is offered under the GPL.

```
word get_crc(ubyte *bufptr, word len)
{
    register unsigned int
    newCRC;
    //Put the current byte in here.
    ubyte
    data;
    int
    bit_count;
    //This seed makes the output of this shift based algorithm match
    //the table based algorithm. The center 16 bits of the 32-bit
    //"newCRC" are used for the CRC. The MSb of the lower byte is used
    //to see what bit was shifted out of the center 16 bit CRC
    //accumulator ("carry flag analog");
    newCRC=0x00F32100;
    while(len--)
    {
        //Get the next byte in the stream.
        data=*bufptr++;
        //Push this byte's bits through a software
        //implementation of a hardware shift & xor.
        for(bit_count=0; bit_count<=7; bit_count++)
        {
            //Shift the CRC accumulator
            newCRC>>=1;

            //The new MSB of the CRC accumulator comes
            //from the LSB of the current data byte.
            if(data&0x01)
                newCRC|=0x00800000;

            //If the low bit of the current CRC accumulator was set
            //before the shift, then we need to XOR the accumulator
            //with the polynomial (center 16 bits of 0x00840800)
            if(newCRC&0x00000080)
                newCRC^=0x00840800;
            //Shift the data byte to put the next bit of the stream
            //into position 0.
            data>>=1;
        }
    }

    //All the data has been done. Do 16 more bits of 0 data.
    for(bit_count=0; bit_count<=15; bit_count++)
    {
        //Shift the CRC accumulator
        newCRC>>=1;
    }
}
```



```
//If the low bit of the current CRC accumulator was set
//before the shift we need to XOR the accumulator with
//0x00840800.
if(newCRC&0x00000080)
    newCRC^=0x00840800;
}
//Return the center 16 bits, making this CRC match the one's
//complement that is sent in the packet.
return((~newCRC)>>8);
}
```

ALGORITHM 3: "PIC ASSEMBLY" BIT SHIFT IMPLEMENTATION

This routine was graciously donated by one of our customers.

```
;=====
; CrystalFontz CFA-633 PIC CRC Calculation Example
;
; This example calculates the CRC for the hard coded example provided
; in the documentation.
;
; It uses "This is a test. " as input and calculates the proper CRC
; of 0x93FA.
;=====
#include "p16f877.inc"
;=====
; CRC16 equates and storage
;-----
accuml      equ      40h      ; BYTE - CRC result register high byte
accumh      equ      41h      ; BYTE - CRC result register high low byte
datareg     equ      42h      ; BYTE - data register for shift
j           equ      43h      ; BYTE - bit counter for CRC 16 routine
Zero        equ      44h      ; BYTE - storage for string memory read
index       equ      45h      ; BYTE - index for string memory read
savchr      equ      46h      ; BYTE - temp storage for CRC routine
;
seedlo      equ      021h     ; initial seed for CRC reg lo byte
seedhi      equ      0F3h     ; initial seed for CRC reg hi byte
;
polyL       equ      008h     ; polynomial low byte
polyH       equ      084h     ; polynomial high byte
;=====
; CRC Test Program
;-----
          org          0          ; reset vector = 0000H
;
          clrf         PCLATH     ; ensure upper bits of PC are cleared
          clrf         STATUS     ; ensure page bits are cleared
          goto         main      ; jump to start of program
;
; ISR Vector
;
          org          4          ; start of ISR
          goto         $          ; jump to ISR when coded
;
          org          20         ; start of main program
main
          movlw        seedhi     ; setup intial CRC seed value.
          movwf        accumh     ; This must be done prior to
          movlw        seedlo     ; sending string to CRC routine.
          movwf        accuml     ;
          clrf         index      ; clear string read variables
;
main1
          movlw        HIGH InputStr ; point to LCD test string
          movwf        PCLATH     ; latch into PCL
```




```

        movfw      index      ; get index
        call       InputStr   ; get character
        movwf      Zero       ; setup for terminator test
        movf       Zero,f     ; see if terminator
        btfsc      STATUS,Z   ; skip if not terminator
        goto       main2      ; else terminator reached, jump out of loop
        call       CRC16      ; calculate new crc
        call       SENDUART    ; send data to LCD
        incf       index,f    ; bump index
        goto       main1      ; loop
;
main2
        movlw      00h        ; shift accumulator 16 more bits.
        call       CRC16      ; This must be done after sending
        movlw      00h        ; string to CRC routine.
        call       CRC16      ;
;
        comf       accumh,f    ; invert result
        comf       accuml,f    ;
;
        movfw      accuml      ; get CRC low byte
        call       SENDUART    ; send to LCD
        movfw      accumh      ; get CRC hi byte
        call       SENDUART    ; send to LCD
;
stop    goto       stop        ; word result of 0x93FA is in accumh/accuml
;=====
; calculate CRC of input byte
;-----
CRC16
        movwf      savchr      ; save the input character
        movwf      datareg     ; load data register
        movlw      .8          ; setup number of bits to test
        movwf      j           ; save to incrementor
_loop
        clrc                     ; clear carry for CRC register shift
        rrf          datareg,f    ; perform shift of data into CRC register
        rrf          accumh,f     ;
        rrf          accuml,f     ;
        btfss       STATUS,C      ; skip jump if if carry
        goto        _notset       ; otherwise goto next bit
        movlw       polyL         ; XOR poly mask with CRC register
        xorwf       accuml,F      ;
        movlw       polyH         ;
        xorwf       accumh,F      ;
_notset
        decfsz      j,F           ; decrement bit counter
        goto        _loop         ; loop if not complete
        movfw       savchr        ; restore the input character
        return      ; return to calling routine
;=====
; USER SUPPLIED Serial port transmit routine
;-----
SENDUART
        return      ; put serial xmit routine here
;=====
; test string storage
;-----
        org        0100h
;
InputStr
        addwf       PCL,f
        dt          7h,10h,"This is a test. ",0
;
;=====
end

```




ALGORITHM 4: “VISUAL BASIC” TABLE IMPLEMENTATION

Visual BASIC has its own challenges as a language (such as initializing static arrays), and it is also challenging to use Visual BASIC to work with “binary” (arbitrary length character data possibly containing nulls—such as the “data” portion of the CFA-633 packet) data. This routine was adapted from the C table implementation. The complete project can be found in our forums.

```
'This program is brutally blunt. Just like VB. No apologies.
'Written by CrystalFontz America, Inc. 2004 http://www.crystalfontz.com
'Free code, not copyright copyleft or anything else.
'Some visual basic concepts taken from:
'http://www.planet-source-code.com/vb/scripts/ShowCode.asp?txtCodeId=21434&lngWid=1
'most of the algorithm is from functions in 633_WinTest:
'http://www.crystalfontz.com/products/633/633_WinTest.zip
'Full zip of the project is available in our forum:
'http://www.crystalfontz.com/forum/showthread.php?postid=9921#post9921

Private Type WORD
    Lo As Byte
    Hi As Byte
End Type

Private Type PACKET_STRUCT
    command As Byte
    data_length As Byte
    data(22) As Byte
    crc As WORD
End Type

Dim crcLookupTable(256) As WORD

Private Sub MSComm_OnComm()
'Leave this here
End Sub

'My understanding of visual basic is very limited--however it appears that there is no way
'to initialize an array of structures. Nice language. Fast processors, lots of memory, big
'disks, and we fill them up with this . . this . . this . . STUFF.
Sub Initialize_CRC_Lookup_Table()
    crcLookupTable(0).Lo = &H0
    crcLookupTable(0).Hi = &H0
    . . .
'For purposes of brevity in this data sheet, I have removed 251 entries of this table, the
'full source is available in our forum:
'http://www.crystalfontz.com/forum/showthread.php?postid=9921#post9921
    . . .
    crcLookupTable(255).Lo = &H78
    crcLookupTable(255).Hi = &HF
End Sub

'This function returns the CRC of the array at data for length positions
Private Function Get_CRC(ByRef data() As Byte, ByVal length As Integer) As WORD
    Dim Index As Integer
    Dim Table_Index As Integer
    Dim newCrc As WORD
    newCrc.Lo = &HFF
    newCrc.Hi = &HFF
    For Index = 0 To length - 1
        'exclusive-or the input byte with the low-order byte of the CRC register
        'to get an index into crcLookupTable
        Table_Index = newCrc.Lo Xor data(Index)
        'shift the CRC register eight bits to the right
        newCrc.Lo = newCrc.Hi
        newCrc.Hi = 0
        ' exclusive-or the CRC register with the contents of Table at Table_Index
        newCrc.Lo = newCrc.Lo Xor crcLookupTable(Table_Index).Lo
        newCrc.Hi = newCrc.Hi Xor crcLookupTable(Table_Index).Hi
    
```



```
Next Index
'Invert & return newCrc
Get_Crc.Lo = newCrc.Lo Xor &HFF
Get_Crc.Hi = newCrc.Hi Xor &HFF
End Function

Private Sub Send_Packet(ByRef packet As PACKET_STRUCT)
Dim Index As Integer
'Need to put the whole packet into a linear array
'since you can't do type overrides. VB, gotta love it.
Dim linear_array(26) As Byte
linear_array(0) = packet.command
linear_array(1) = packet.data_length
For Index = 0 To packet.data_length - 1
    linear_array(Index + 2) = packet.data(Index)
Next Index
packet.crc = Get_Crc(linear_array, packet.data_length + 2)
'Might as well move the CRC into the linear array too
linear_array(packet.data_length + 2) = packet.crc.Lo
linear_array(packet.data_length + 3) = packet.crc.Hi
'Now a simple loop can dump it out the port.
For Index = 0 To packet.data_length + 3
    MSComm.Output = Chr(linear_array(Index))
Next Index
End Sub
```

ALGORITHM 5: “JAVA” TABLE IMPLEMENTATION

This [code was posted in our forum](#) by user “norm” as a working example of a Java CRC calculation.

```
public class CRC16 extends Object
{
    public static void main(String[] args)
    {
        byte[] data = new byte[2];
        // hw - fw
        data[0] = 0x01;
        data[1] = 0x00;
        System.out.println("hw -fw req");
        System.out.println(Integer.toHexString(compute(data)));

        // ping
        data[0] = 0x00;
        data[1] = 0x00;
        System.out.println("ping");
        System.out.println(Integer.toHexString(compute(data)));

        // reboot
        data[0] = 0x05;
        data[1] = 0x00;
        System.out.println("reboot");
        System.out.println(Integer.toHexString(compute(data)));

        // clear lcd
        data[0] = 0x06;
        data[1] = 0x00;
        System.out.println("clear lcd");
        System.out.println(Integer.toHexString(compute(data)));

        // set line 1
        data = new byte[18];
        data[0] = 0x07;
        data[1] = 0x10;
        String text = "Test Test Test ";
        byte[] textByte = text.getBytes();
        for (int i=0; i < text.length(); i++) data[i+2] = textByte[i];
        System.out.println("text 1");
    }
}
```



```

    System.out.println(Integer.toHexString(compute(data)));
}
private CRC16()
{
}
private static final int[] crcLookupTable =
{
    0x00000, 0x01189, 0x02312, 0x0329B, 0x04624, 0x057AD, 0x06536, 0x074BF,
    0x08C48, 0x09DC1, 0x0AF5A, 0x0BED3, 0x0CA6C, 0x0DBE5, 0x0E97E, 0x0F8F7,
    0x01081, 0x00108, 0x03393, 0x0221A, 0x056A5, 0x0472C, 0x075B7, 0x0643E,
    0x09CC9, 0x08D40, 0x0BFDB, 0x0AE52, 0x0DAED, 0x0CB64, 0x0F9FF, 0x0E876,
    0x02102, 0x0308B, 0x00210, 0x01399, 0x06726, 0x076AF, 0x04434, 0x055BD,
    0x0AD4A, 0x0BCC3, 0x08E58, 0x09FD1, 0x0EB6E, 0x0FAE7, 0x0C87C, 0x0D9F5,
    0x03183, 0x0200A, 0x01291, 0x00318, 0x077A7, 0x0662E, 0x054B5, 0x0453C,
    0x0BDCB, 0x0AC42, 0x09ED9, 0x08F50, 0x0FBEF, 0x0EA66, 0x0D8FD, 0x0C974,
    0x04204, 0x0538D, 0x06116, 0x0709F, 0x00420, 0x015A9, 0x02732, 0x036BB,
    0x0CE4C, 0x0DFC5, 0x0ED5E, 0x0FCD7, 0x08868, 0x099E1, 0x0AB7A, 0x0BAF3,
    0x05285, 0x0430C, 0x07197, 0x0601E, 0x014A1, 0x00528, 0x037B3, 0x0263A,
    0x0DECD, 0x0CF44, 0x0FDDF, 0x0EC56, 0x098E9, 0x08960, 0x0BBFB, 0x0AA72,
    0x06306, 0x0728F, 0x04014, 0x0519D, 0x02522, 0x034AB, 0x00630, 0x017B9,
    0x0EF4E, 0x0FEC7, 0x0CC5C, 0x0DDD5, 0x0A96A, 0x0B8E3, 0x08A78, 0x09BF1,
    0x07387, 0x0620E, 0x05095, 0x0411C, 0x035A3, 0x0242A, 0x016B1, 0x00738,
    0x0FFCF, 0x0EE46, 0x0DCDD, 0x0CD54, 0x0B9EB, 0x0A862, 0x09AF9, 0x08B70,
    0x08408, 0x09581, 0x0A71A, 0x0B693, 0x0C22C, 0x0D3A5, 0x0E13E, 0x0F0B7,
    0x00840, 0x019C9, 0x02B52, 0x03ADB, 0x04E64, 0x05FED, 0x06D76, 0x07CFF,
    0x09489, 0x08500, 0x0B79B, 0x0A612, 0x0D2AD, 0x0C324, 0x0F1BF, 0x0E036,
    0x018C1, 0x00948, 0x03BD3, 0x02A5A, 0x05EE5, 0x04F6C, 0x07DF7, 0x06C7E,
    0x0A50A, 0x0B483, 0x08618, 0x09791, 0x0E32E, 0x0F2A7, 0x0C03C, 0x0D1B5,
    0x02942, 0x038CB, 0x00A50, 0x01BD9, 0x06F66, 0x07EEF, 0x04C74, 0x05DFD,
    0x0B58B, 0x0A402, 0x09699, 0x08710, 0x0F3AF, 0x0E226, 0x0D0BD, 0x0C134,
    0x039C3, 0x0284A, 0x01AD1, 0x00B58, 0x07FE7, 0x06E6E, 0x05CF5, 0x04D7C,
    0x0C60C, 0x0D785, 0x0E51E, 0x0F497, 0x08028, 0x091A1, 0x0A33A, 0x0B2B3,
    0x04A44, 0x05BCD, 0x06956, 0x078DF, 0x00C60, 0x01DE9, 0x02F72, 0x03EFB,
    0x0D68D, 0x0C704, 0x0F59F, 0x0E416, 0x090A9, 0x08120, 0x0B3BB, 0x0A232,
    0x05AC5, 0x04B4C, 0x079D7, 0x0685E, 0x01CE1, 0x00D68, 0x03FF3, 0x02E7A,
    0x0E70E, 0x0F687, 0x0C41C, 0x0D595, 0x0A12A, 0x0B0A3, 0x08238, 0x093B1,
    0x06B46, 0x07ACF, 0x04854, 0x059DD, 0x02D62, 0x03CEB, 0x00E70, 0x01FF9,
    0x0F78F, 0x0E606, 0x0D49D, 0x0C514, 0x0B1AB, 0x0A022, 0x092B9, 0x08330,
    0x07BC7, 0x06A4E, 0x058D5, 0x0495C, 0x03DE3, 0x02C6A, 0x01EF1, 0x00F78
};
public static int compute(byte[] data)
{
    int newCrc = 0xFFFF;
    for (int i = 0; i < data.length; i++)
    {
        int lookup = crcLookupTable[(newCrc ^ data[i]) & 0xFF];
        newCrc = (newCrc >> 8) ^ lookup;
    }
    return(~newCrc);
}
}

```

ALGORITHM 6: “PERL” TABLE IMPLEMENTATION

This code was translated from the C version by one of our customers.

```

#!/usr/bin/perl

use strict;

my @CRC_LOOKUP =
(0x00000, 0x01189, 0x02312, 0x0329B, 0x04624, 0x057AD, 0x06536, 0x074BF,
0x08C48, 0x09DC1, 0x0AF5A, 0x0BED3, 0x0CA6C, 0x0DBE5, 0x0E97E, 0x0F8F7,
0x01081, 0x00108, 0x03393, 0x0221A, 0x056A5, 0x0472C, 0x075B7, 0x0643E,
0x09CC9, 0x08D40, 0x0BFDB, 0x0AE52, 0x0DAED, 0x0CB64, 0x0F9FF, 0x0E876,
0x02102, 0x0308B, 0x00210, 0x01399, 0x06726, 0x076AF, 0x04434, 0x055BD,
0x0AD4A, 0x0BCC3, 0x08E58, 0x09FD1, 0x0EB6E, 0x0FAE7, 0x0C87C, 0x0D9F5,

```



```
0x03183,0x0200A,0x01291,0x00318,0x077A7,0x0662E,0x054B5,0x0453C,
0x0BDCB,0x0AC42,0x09ED9,0x08F50,0x0FBEF,0x0EA66,0x0D8FD,0x0C974,
0x04204,0x0538D,0x06116,0x0709F,0x00420,0x015A9,0x02732,0x036BB,
0x0CE4C,0x0DFC5,0x0ED5E,0x0FCD7,0x08868,0x099E1,0x0AB7A,0x0BAF3,
0x05285,0x0430C,0x07197,0x0601E,0x014A1,0x00528,0x037B3,0x0263A,
0x0DECD,0x0CF44,0x0FDDF,0x0EC56,0x098E9,0x08960,0x0BBFB,0x0AA72,
0x06306,0x0728F,0x04014,0x0519D,0x02522,0x034AB,0x00630,0x017B9,
0x0EF4E,0x0FEC7,0x0CC5C,0x0DDD5,0x0A96A,0x0B8E3,0x08A78,0x09BF1,
0x07387,0x0620E,0x05095,0x0411C,0x035A3,0x0242A,0x016B1,0x00738,
0x0FFCF,0x0EE46,0x0DCDD,0x0CD54,0x0B9EB,0x0A862,0x09AF9,0x08B70,
0x08408,0x09581,0x0A71A,0x0B693,0x0C22C,0x0D3A5,0x0E13E,0x0F0B7,
0x00840,0x019C9,0x02B52,0x03ADB,0x04E64,0x05FED,0x06D76,0x07CFF,
0x09489,0x08500,0x0B79B,0x0A612,0x0D2AD,0x0C324,0x0F1BF,0x0E036,
0x018C1,0x00948,0x03BD3,0x02A5A,0x05EE5,0x04F6C,0x07DF7,0x06C7E,
0x0A50A,0x0B483,0x08618,0x09791,0x0E32E,0x0F2A7,0x0C03C,0x0D1B5,
0x02942,0x038CB,0x00A50,0x01BD9,0x06F66,0x07EEF,0x04C74,0x05DFD,
0x0B58B,0x0A402,0x09699,0x08710,0x0F3AF,0x0E226,0x0D0BD,0x0C134,
0x039C3,0x0284A,0x01AD1,0x00B58,0x07FE7,0x06E6E,0x05CF5,0x04D7C,
0x0C60C,0x0D785,0x0E51E,0x0F497,0x08028,0x091A1,0x0A33A,0x0B2B3,
0x04A44,0x05BCD,0x06956,0x078DF,0x00C60,0x01DE9,0x02F72,0x03EFB,
0x0D68D,0x0C704,0x0F59F,0x0E416,0x090A9,0x08120,0x0B3BB,0x0A232,
0x05AC5,0x04B4C,0x079D7,0x0685E,0x01CE1,0x00D68,0x03FF3,0x02E7A,
0x0E70E,0x0F687,0x0C41C,0x0D595,0x0A12A,0x0B0A3,0x08238,0x093B1,
0x06B46,0x07ACF,0x04854,0x059DD,0x02D62,0x03CEB,0x00E70,0x01FF9,
0x0F78F,0x0E606,0x0D49D,0x0C514,0x0B1AB,0x0A022,0x092B9,0x08330,
0x07BC7,0x06A4E,0x058D5,0x0495C,0x03DE3,0x02C6A,0x01EF1,0x00F78);
```

```
# our test packet read from an enter key press over the serial line:
# type = 80          (key press)
# data_length = 1    (1 byte of data)
# data = 5

my $type = '80';
my $length = '01';
my $data = '05';

my $packet = $type . $length . $data ;

my $valid_crc = '5584' ;

print "A CRC of Packet ($packet) Should Equal ($valid_crc)\n";

my $crc = 0xFFFF ;

printf("%x\n", $crc);

foreach my $char (split //, $packet)
{
    # newCrc = (newCrc >> 8) ^ crcLookupTable[(newCrc ^ *bufptr++) & 0xff];
    # & is bitwise AND
    # ^ is bitwise XOR
    # >> bitwise shift right
    $crc = ($crc >> 8) ^ $CRC_LOOKUP[($crc ^ ord($char) ) & 0xFF] ;
    # print out the running crc at each byte
    printf("%x\n", $crc);
}

# get the complement
$crc = ~$crc ;
$crc = ($crc & 0xFFFF) ;

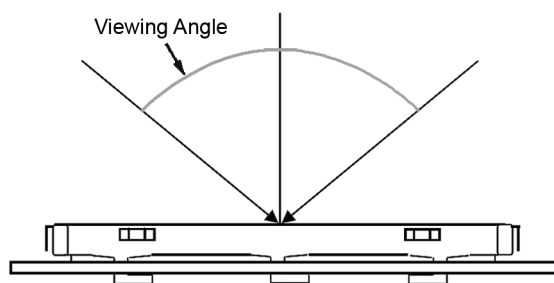
# print out the crc in hex
printf("%x\n", $crc);
```



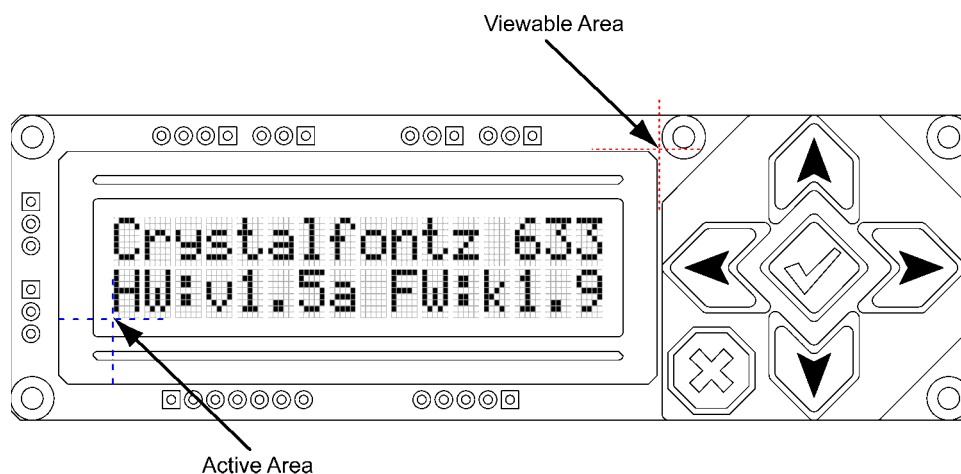
APPENDIX D: QUALITY ASSURANCE STANDARDS

INSPECTION CONDITIONS

- Environment
 - Temperature: $25 \pm 5^{\circ}\text{C}$
 - Humidity: 30~85% RH
- For visual inspection of active display area
 - Source lighting: two 20 Watt or one 40 Watt fluorescent light
 - Display adjusted for best contrast
 - Viewing distance: 30 ± 5 cm (about 12 inches)
 - Viewable angle: inspect at 45° angle of vertical line right and left, top and bottom



DEFINITION OF ACTIVE AREA AND VIEWABLE AREA





ACCEPTANCE SAMPLING


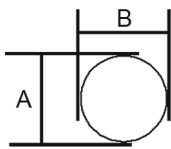
DEFECT TYPE	AQL*
Major	$\leq 0.65\%$
Minor	$\leq 1.00\%$
*Acceptable Quality Level: maximum allowable error rate or variation from standard	

DEFECTS CLASSIFICATION

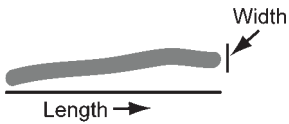
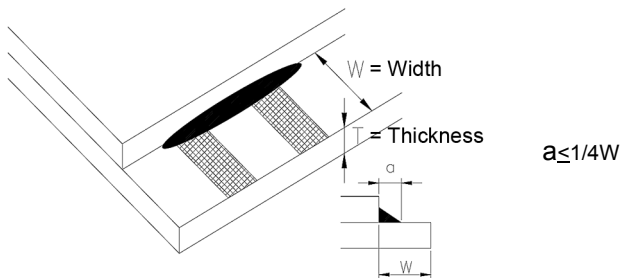
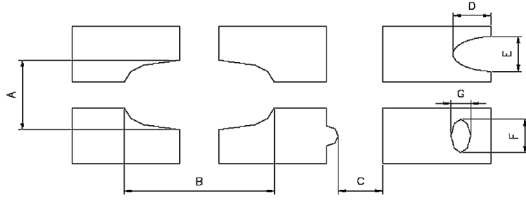
Defects are defined as:

- Major Defect: results in failure or substantially reduces usability of unit for its intended purpose
- Minor Defect: deviates from standards but is not likely to reduce usability for its intended purpose

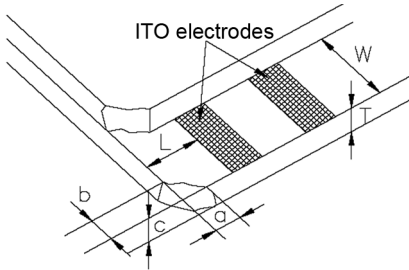
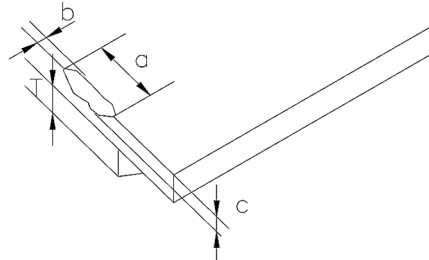
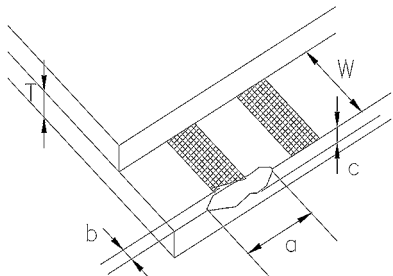
ACCEPTANCE STANDARDS

#	DEFECT TYPE	CRITERIA			MAJOR / MINOR
1	Electrical defects	1. No display, display malfunctions, or shorted segments. 2. Current consumption exceeds specifications.			Major
2	Viewing area defect	Viewing area does not meet specifications. (See Inspection Conditions (Pg. 59)).			Major
3	Contrast adjustment defect	Contrast adjustment fails or malfunctions.			Major
4	Blemishes or foreign matter on display segments	<div>Blemish </div>	<i>Defect Size (mm)</i>	<i>Acceptable Qty</i>	Minor
			≤0.3	3	
			≤2 defects within 10 mm of each other		
5	Other blemishes or foreign matter outside of display segments	<div>Defect size = (A + B)/2 </div>	<i>Defect Size (mm)</i>	<i>Acceptable Qty</i>	Minor
			≤0.15	Ignore	
			0.15 to 0.20	3	
			0.20 to 0.25	2	
			0.25 to 0.30	1	

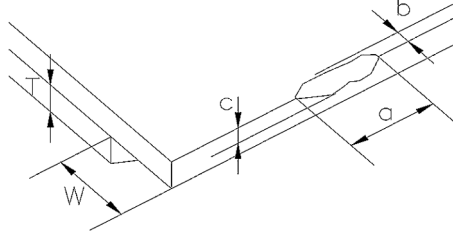
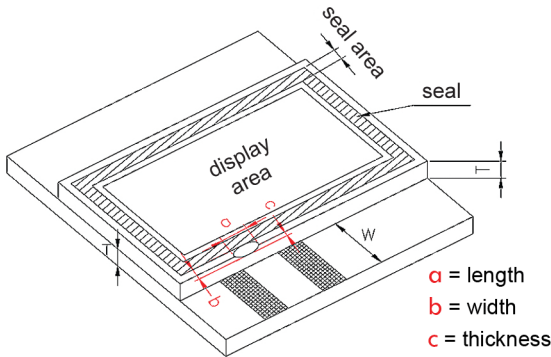


#	DEFECT TYPE	CRITERIA			MAJOR / MINOR
6	Dark lines or scratches in display area 	Defect Width (mm)	Defect Length (mm)	Acceptable Qty	Minor
		≤0.03	≤3.0	3	
		0.03 to 0.05	≤2.0	2	
		0.05 to 0.08	≤2.0	1	
		0.08 to 0.10	≤3.0	0	
		≥0.10	>3.0	0	
7	Bubbles between polarizer film and glass	Defect Size (mm)	Acceptable Qty	Minor	
		≤0.20	Ignore		
		0.20 to 0.40	3		
		0.40 to 0.60	2		
		≥0.60	0		
8	Glass rest defect				Minor
9	Display pattern defect				Minor
		Dot Size (mm)	Acceptable Qty		
		((A+B)/2)≤0.2	≤3 total defects ≤2 pinholes per digit		
		C>0			
		((D+E)/2)≤0.25			
		((F+G)/2)≤0.25			



#	DEFECT TYPE	CRITERIA				MAJOR / MINOR
10	Chip in corner					Minor
		a	b	c	Acceptable Qty	
		<4 mm	≤W	c≤T	3	
11	Chip on “non-contact” edge of LCD					Minor
		a	b	c	Acceptable Qty	
		≤3 mm	≤1 mm	≤T	Ignore	
		≤4 mm	≤1.5 mm	≤T	3	
12	Chip on “contact” edge of LCD, on the active side					Minor
		a	b	c	Acceptable Qty	
		≤2 mm	≤W/4	≤T	Ignore	
		≤3 mm	≤W/4	≤T	3	



#	DEFECT TYPE	CRITERIA				MAJOR / MINOR
13	Chip on “contact” edge of LCD, on the inactive side					Minor
		a	b	c	Acceptable Qty	
		≤3 mm	≤1 mm	≤T	Ignore	
		≤4 mm	≤1.5 mm	≤T	3	
14	Chip in seal area	 <p>a = length b = width c = thickness</p>				Minor Major
		a	b	c	Acceptable Qty	
		<3 mm	≤1.5 mm	≤1/2 T	3	
		Unacceptable if c>50% of glass thickness or if the seal area is damaged.				
15	Backlight defects	1. Light fails or flickers. (Major) 2. Color and luminance do not correspond to specifications. (Major) 3. Exceeds standards for display’s blemishes or foreign matter (see test 5, Pg. 60), and dark lines or scratches (see test 6, Pg. 61). (Minor)				See list
16	COB defects	1. Pinholes >0.2 mm. 2. Seal surface has pinholes through to the IC. 3. More than 3 locations of sealant beyond 2 mm of the sealed areas.				Minor
17	PCB defects	1. Oxidation or contamination on connectors.* 2. Wrong parts, missing parts, or parts not in specification.* 3. Jumpers set incorrectly. (Minor) 4. Solder (if any) on bezel, LED pad, zebra pad, or screw hole pad is not smooth. (Minor) *Minor if display functions correctly. Major if the display fails.				See list



#	DEFECT TYPE	CRITERIA	MAJOR / MINOR
18	Soldering defects	<ul style="list-style-type: none">1. Unmelted solder paste.2. Cold solder joints, missing solder connections, or oxidation.*3. Solder bridges causing short circuits.*4. Residue or solder balls.5. Solder flux is black or brown. <p>*Minor if display functions correctly. Major if the display fails.</p>	Minor