

Driver Installation Under Windows XP

1. **Step 1:** Plug in the USB type A receptacle of the cable to the USB connector of your computer.

Step 2: Place the enclosed CD Driver into the CD ROM.

- Step 3:** Click “next” at the Found New Hardware Wizard screen.

See Figure 1



Figure 1

2. Select the default location and click “next” to continue.

See Figure 2

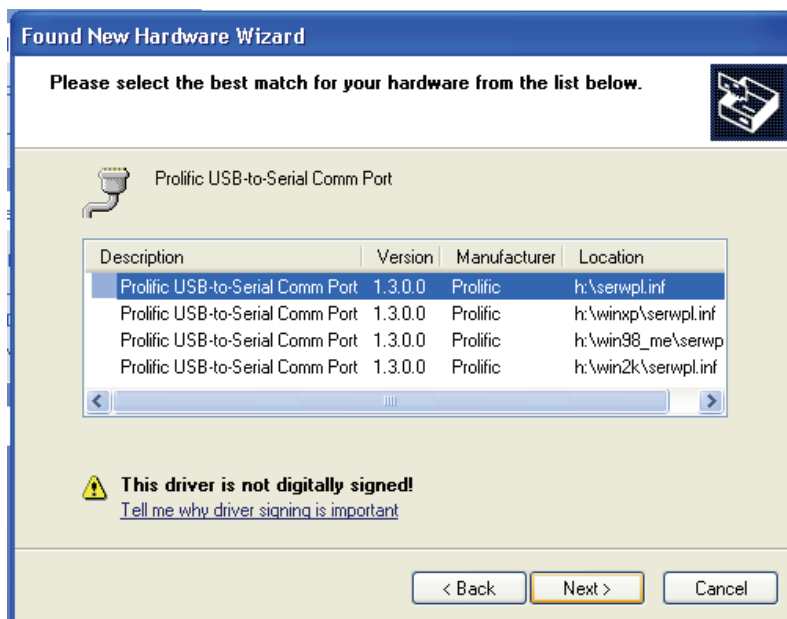


Figure 2

3. Click “**Continue Anyway**” to proceed the installation.
See Figure 3



Figure 3

4. The Wizard has finished installing the software, click “**Finish**” to close the Wizard. See Figure 4.

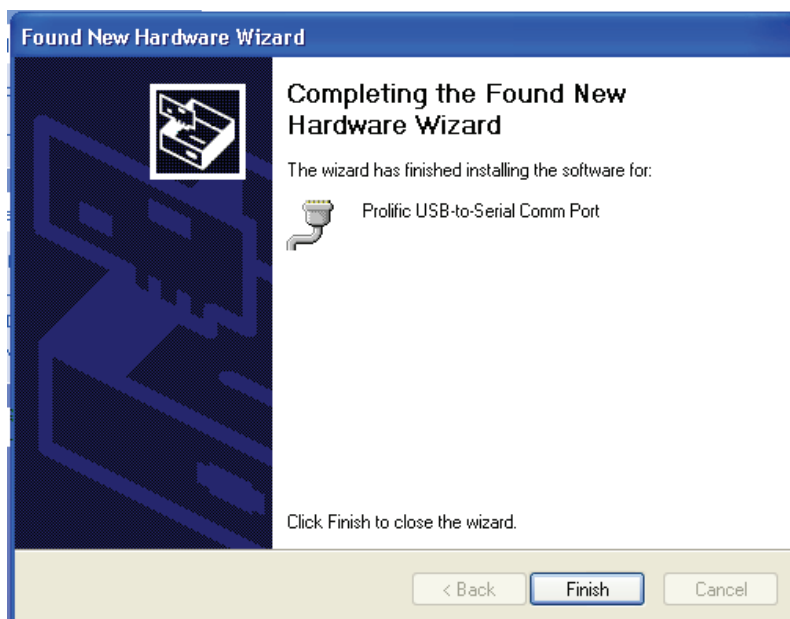
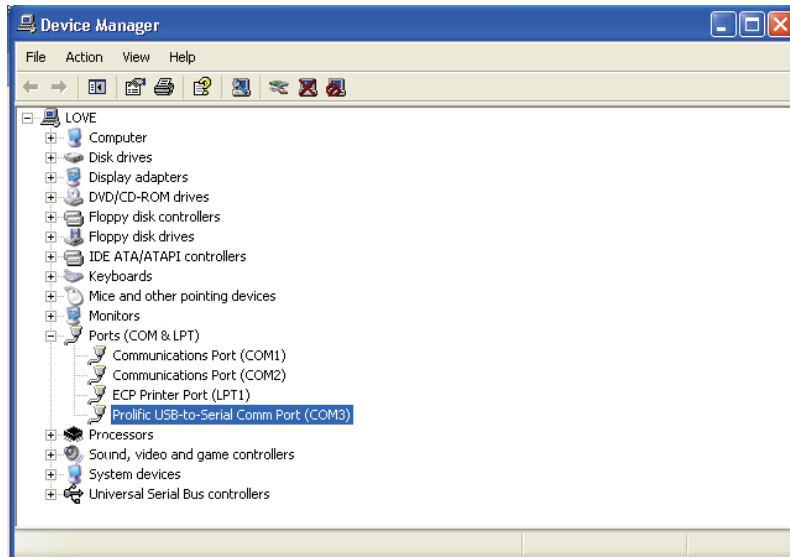


Figure 4

5. Double click “My Computer” →”System Properties”→”Device Manager” to make sure the device you install is correctly displayed. See Figure 5



Driver Installation Under Windows 2000

1. **Step 1:** Plug in the USB type A receptacle of the cable to the USB connector of your computer.
Step 2: Place the enclosed CD Driver into the CD ROM.
Step 3: Click “next” at the welcome screen. See Figure 1

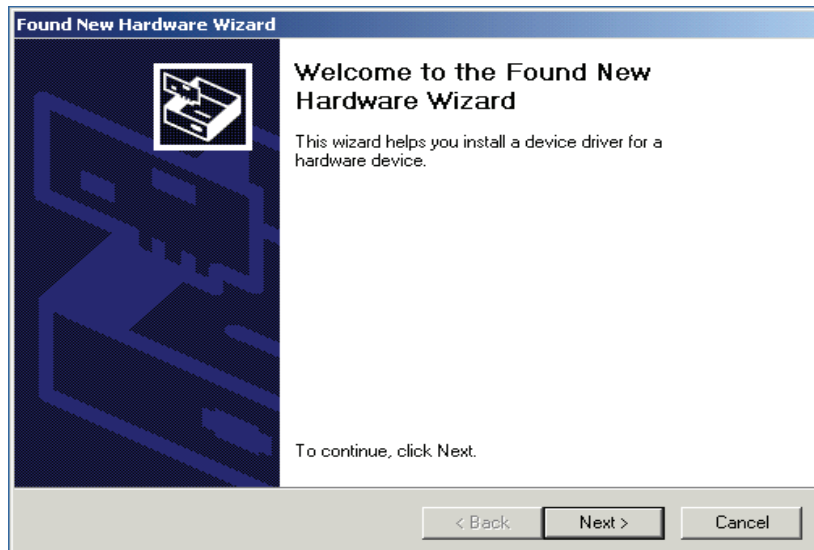


Figure 1

2. The “Found New Hardware Wizard” will install the driver automatically.
Click “next” button to search for a suitable driver (default and recommended). See Figure 2

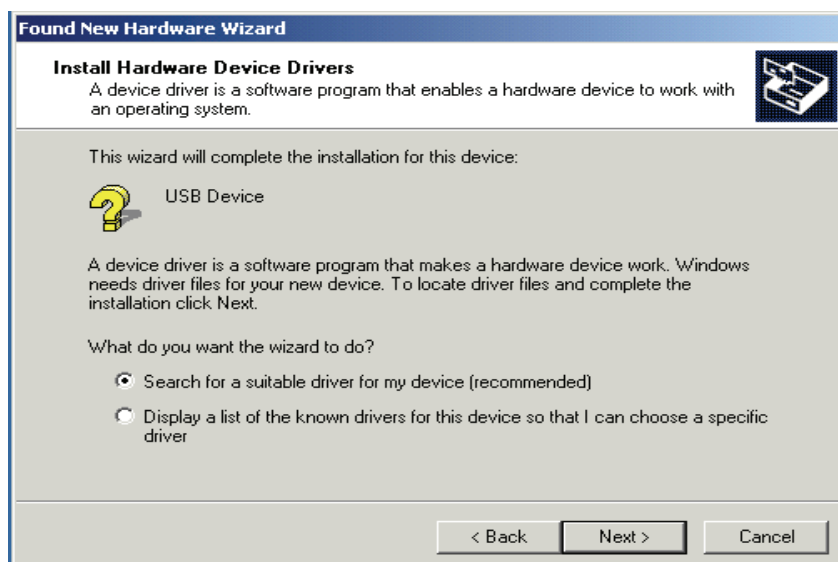


Figure 2

3. Choose “CD-ROM” drives and click “next”. See Figure 3

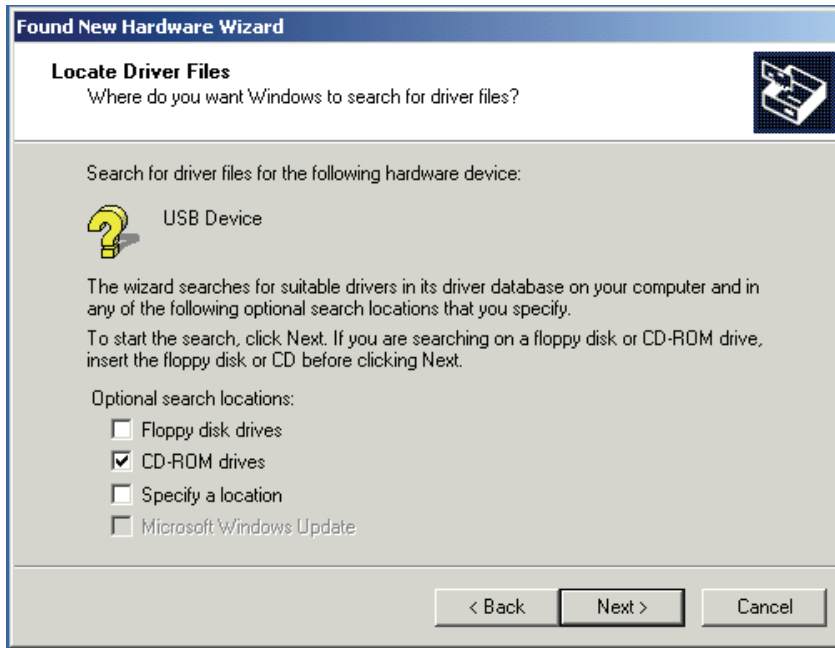


Figure 3

4. Click “next” to install the driver. See Figure 4

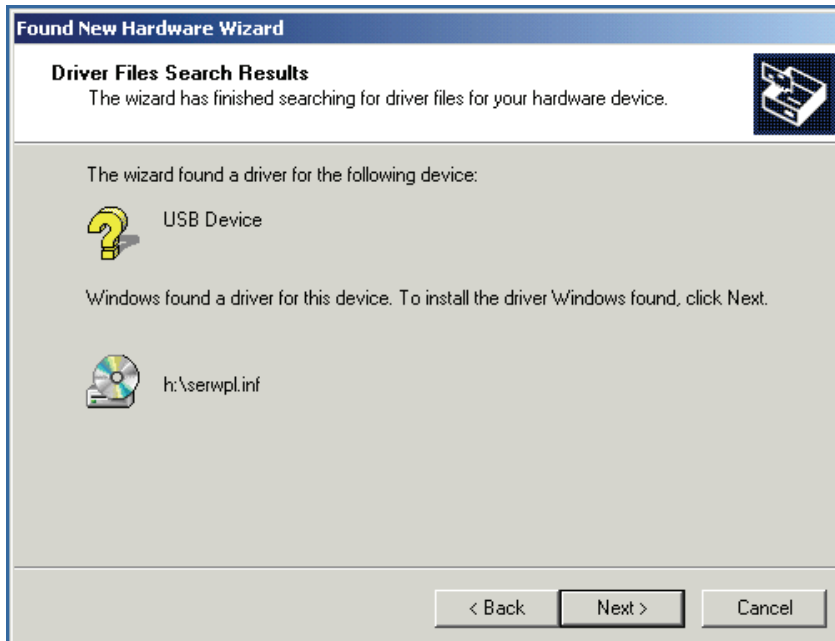


Figure 4

5. Click “ **Finish** ” to close the Wizard. See Figure 5

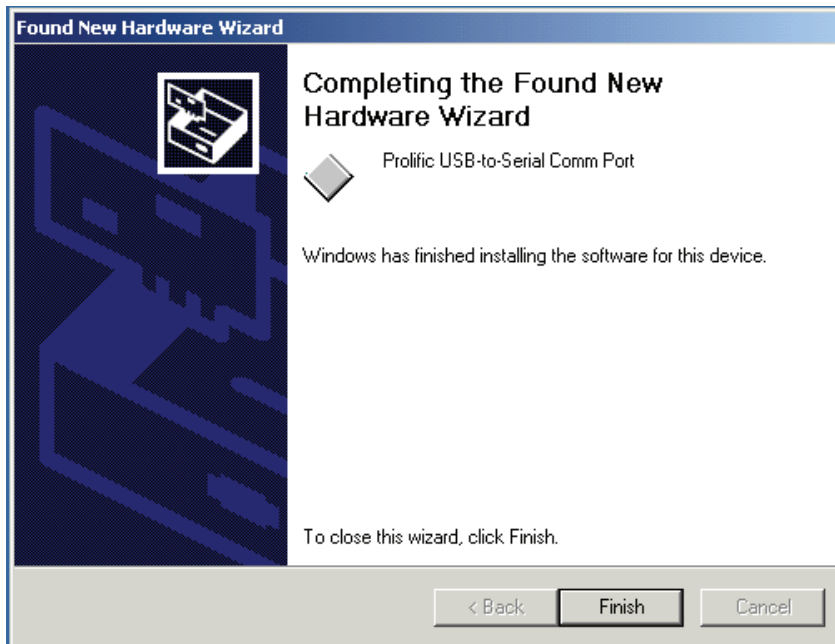


Figure 5

6. Double click “My Computer” →”System Properties”→”Device Manager” to make sure the device you install is correctly displayed. See Figure 6

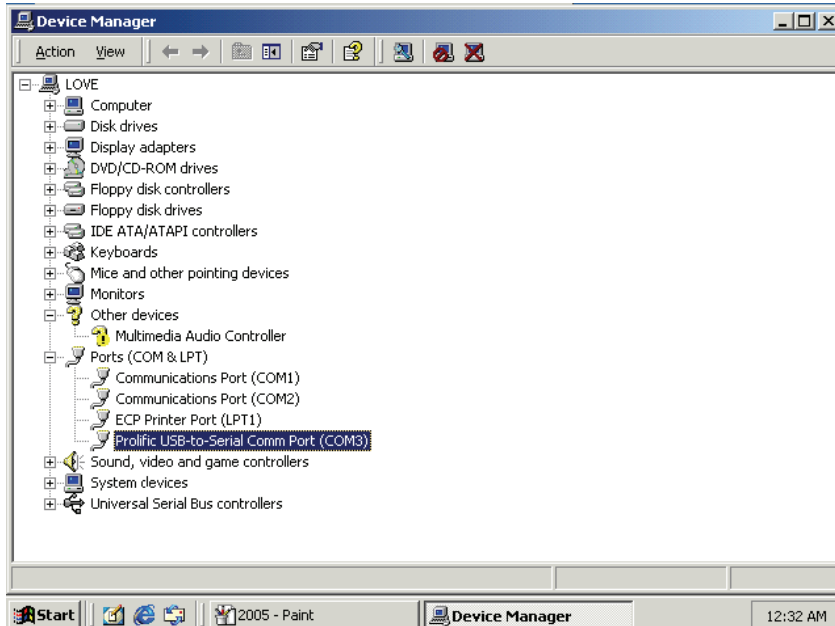


Figure 6

Driver Installation Under Windows 98

1. **Step 1:** Plug in the USB type A receptacle of the cable to the USB connector of your computer.

Step 2: Place the enclosed CD Driver into the CD ROM.

Step 3: Click “next” to search for new drivers for USB Device.

See Figure 1



Figure 1

2. Select ‘ Search for the best driver for your device’ and click “next”.

See Figure 2.



Figure 2

3. Specify the CD-ROM\US-001\98~XP\WIN98_ME drive and click “next”.
See Figure 3



Figure 3

4. Windows driver file will search for the device, click “next” to continue.
See Figure 4

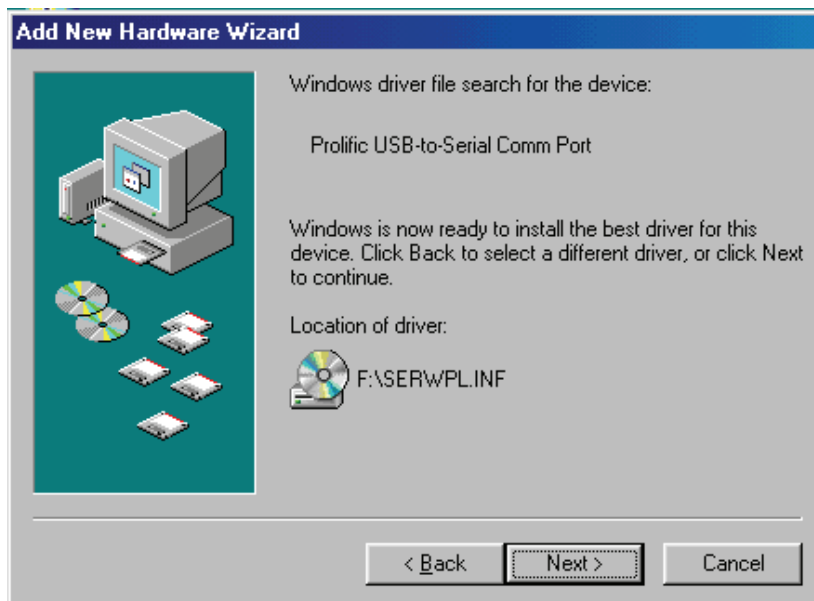


Figure 4

5. Windows has finished installing the software, click “Finish” to close the Wizard. See Figure 5



Figure 5

6. Open “ Device Manager “ under System Properties and check if There is the device you install under “ Universal Serial Bus controllers”. See Figure 6

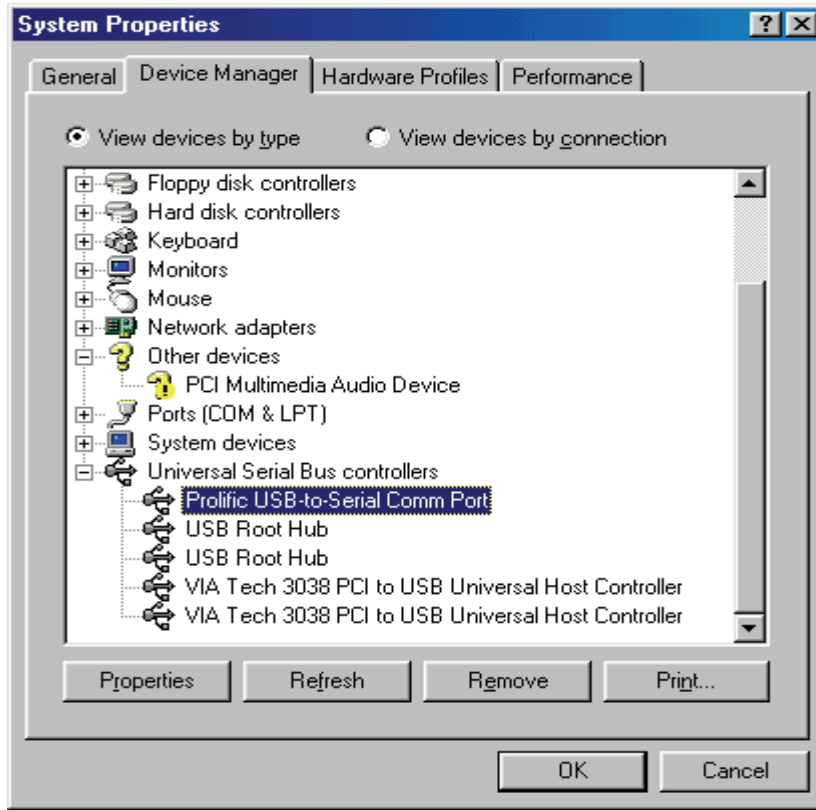


Figure 6

Driver Installation Under Win ME

1. **Step 1:** Plug in the USB type A receptacle of the cable to the USB connector of your computer.

Step 2: Place the enclosed CD Driver into the CD ROM.

Step 3: Click “next” at the Add New Hardware Wizard screen.

See Figure 1



Figure 1

2. Please select the driver that matches your language and device and click “OK”.

See Figure 2

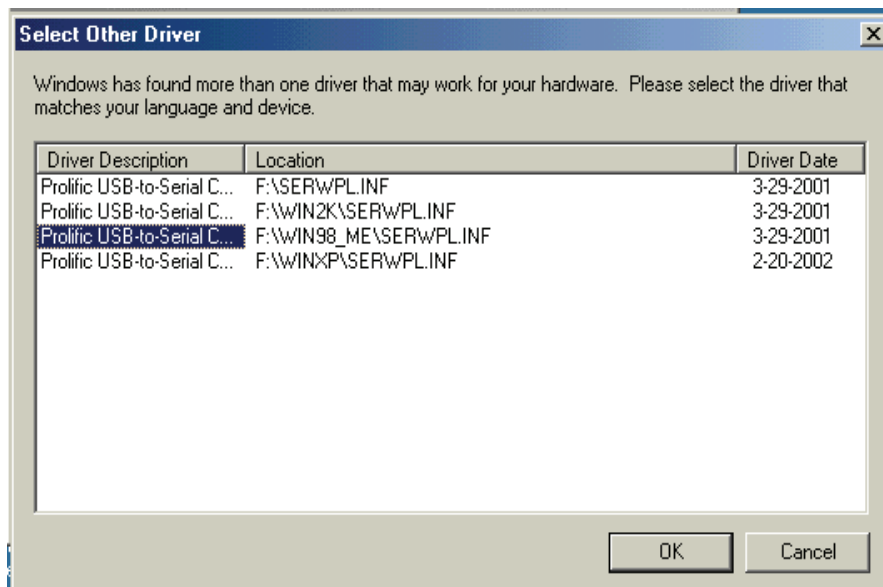


Figure 2

3. Windows has finished installing the software your new hardware device requires, click “**Finish**” to close the Wizard. See Figure 3



Figure 3

4. Double click “My Computer” →”System Properties”→”Device Manager” to make sure the device you install is correctly displayed. See Figure 4

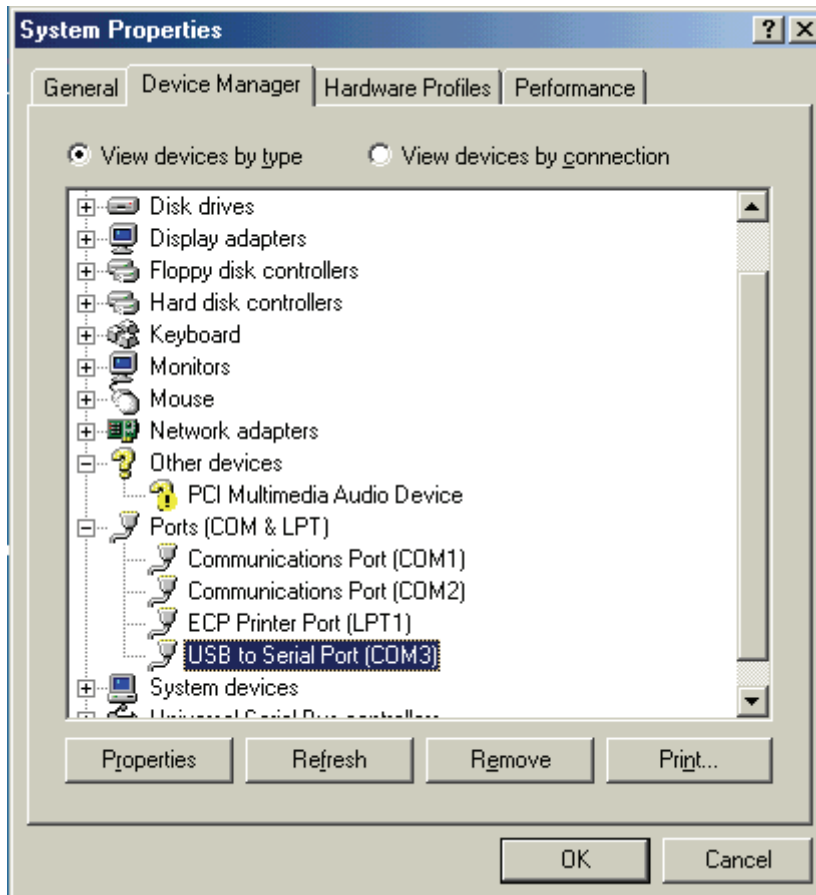


Figure 4

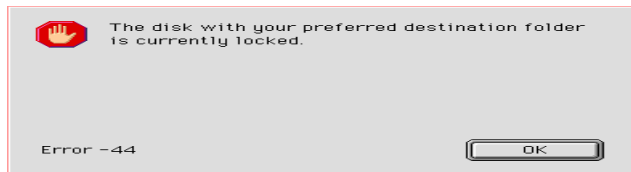
For MAC USB/Serial Cable Setup

Step 1. Insert CD disk (USB/RS232 V1_1), choose **Mac.sit**

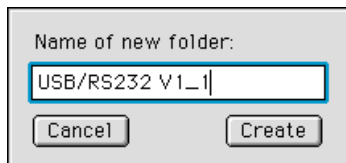


Step 2. Plug USB/Serial cable into your computer's USB port

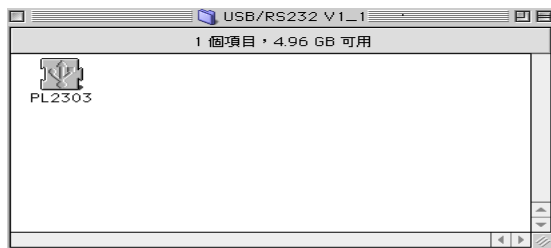
Step 3. Click **OK**



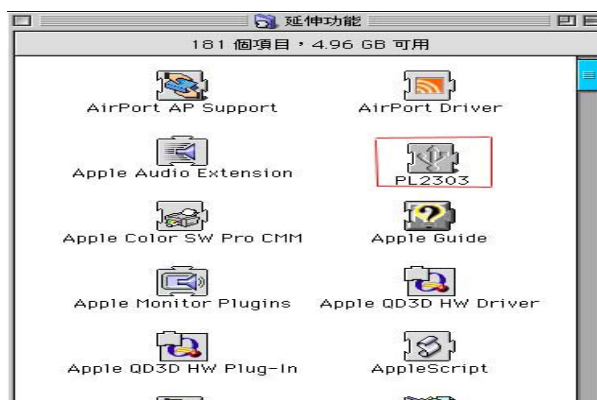
Step 4. Type your file name, and click **Create**.



Step 5. You can see the file, which you created.



Step 6. Drag file **PL2303** into system extension (Apple Extras), and then restart your computer. (As picture shows)



How PL-2303H/X driver works with Modem on Linux RedHat 7.3

I am believed that you already have PL-2303X/H Linux driver source, and you also know how to compile it in Linux, so I only explain how to link device with our driver.

In Makefile file, we had set a command to insert driver into Kernel, so you can type "make inst" to insert driver, after that, please type "dmesg" command then click enter, you will see messages appeared on screen, please force on the least line of message, "usbserial.c"

The Prolific USB Serial Adapter converter now attached to ttyUSB0 (orusb/tts/0 for devfs).

It means the virtue COM port is in ttyUSB0, so if you want to use this port, you need to use "ln" command to hard link with device, for example: we are use PL-2303X/H to connect with modem (or ttyS0), so we need to type "ln -b /dev/ttyUSB0 /dev/ttyS0" then click enter, if nothing happen and the screen appear "[root@localhost / xxxxx]#", then link operation is successfully, next, you need to execute

Start→Programs→System→Internet configuration wizard to setup modem and it port,

1. On "Select Device Type" dialog box, please chose "Modem Connection", please ignore the "can't not find modem" message and then click next, on this dialog box, and on "Modem Device" item to selects "/dev/ttyS0", click next.
2. On "Selection Provider" dialog box, please fill in the dial number, account and password.
3. Click "Finish" button to the next step.
4. On the next dialog box, all setting information are in this box, please make sure all the setting as you want.
5. Click "Apply" and "Close" to leave setup wizard.
6. To execute Start→Applets→Network→Modem Lights, a small icon will appear on the left-bottom of panel bar, when you want you connect internet, you can click the green light to do dial-up, after that, you can launch internet application program to browser internet.
7. To click Red light to disconnect dial-up.