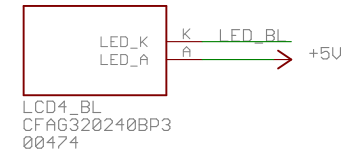
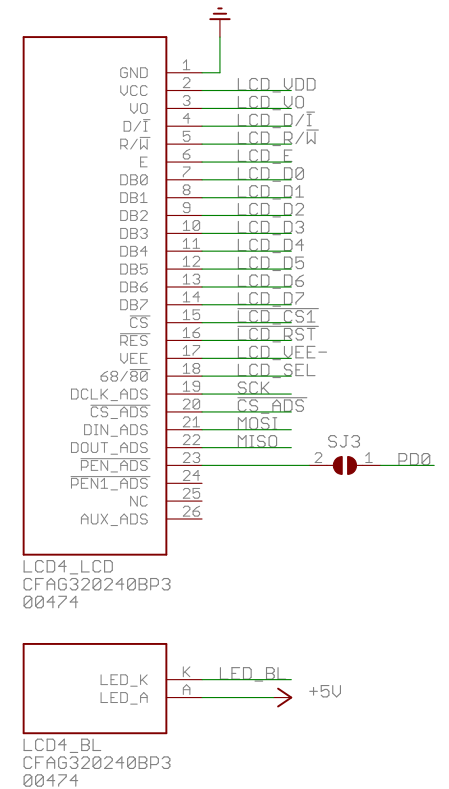
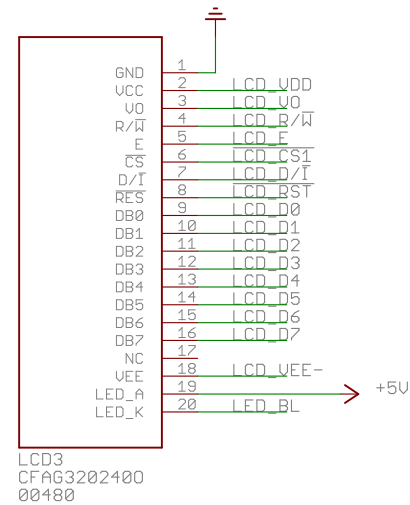
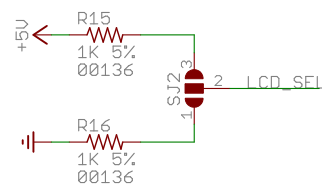
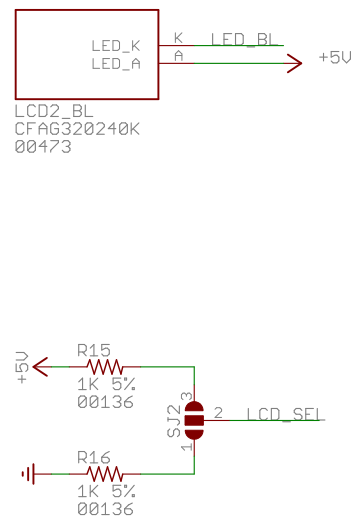
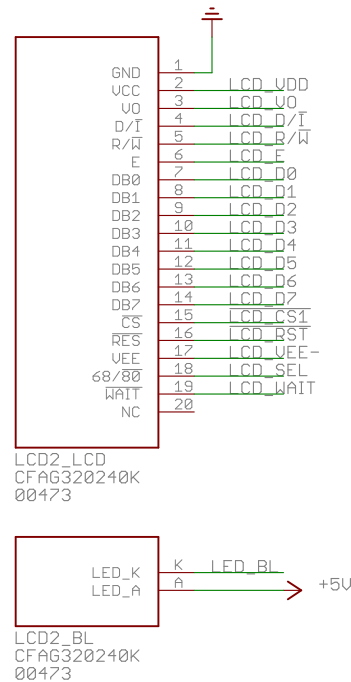
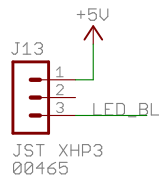
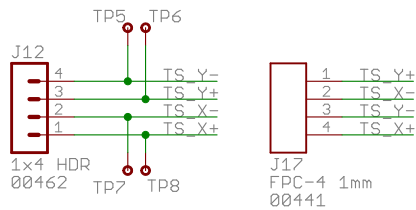
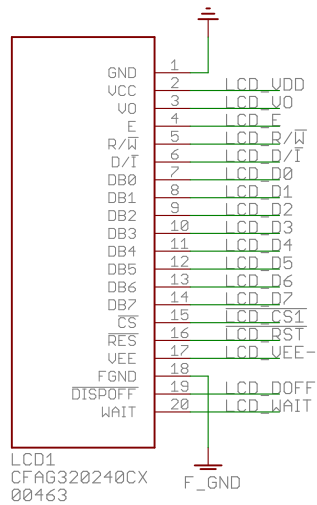


**Crystalfontz America Inc.**  
 12412 E. Saltese Ave. Spokane Valley WA 99216  
 (888) 206-9720 [www.crystalfontz.com](http://www.crystalfontz.com)

TITLE: cfa_10018		BY: Jesper Hansen
Description: LCD Module Demo Board SED13700 & RA8835 Controllers		REV: 1.1
Date: 5/4/2011 11:14:28 AM		Sheet: 1/4



Crystalfontz America Inc.

12412 E. Saltese Ave. Spokane Valley WA 99216  
(888) 206-9720 www.crystalfontz.com

TITLE: cfa\_10018

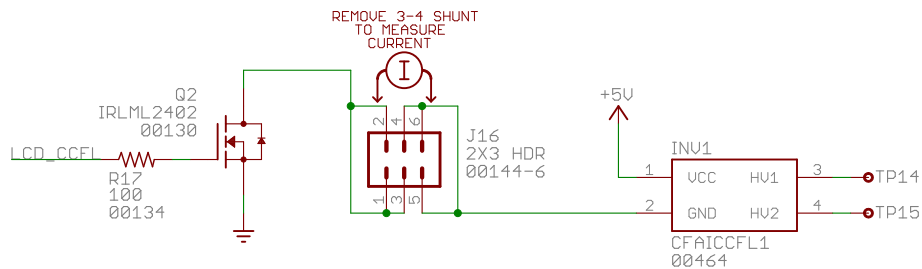
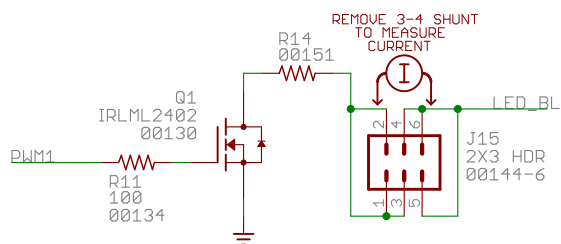
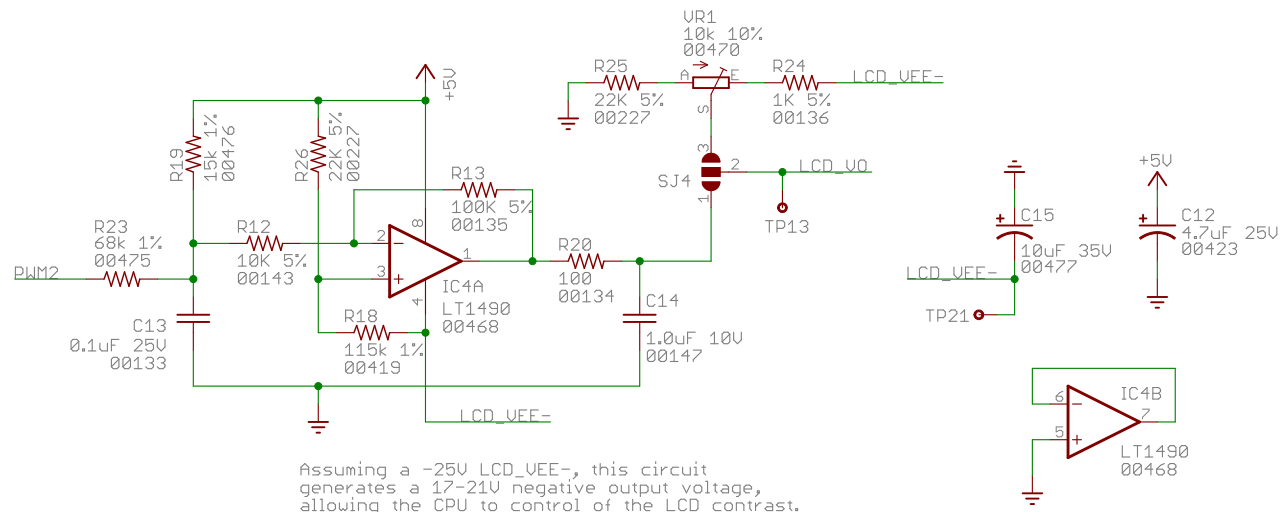
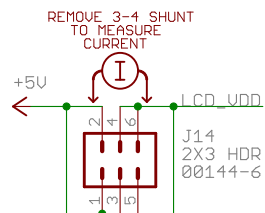
BY: Jesper Hansen


Description: LCD Module Demo Board  
SED13700 & RA8835 Controllers

REV:  
1.1

Date: 5/4/2011 11:14:28 AM

Sheet: 2/4




 <b>Crystalfontz America Inc.</b> 12412 E. Saltese Ave. Spokane Valley WA 99216 (888) 206-9720 www.crystalfontz.com	
TITLE: cfa_10018	BY: Jesper Hansen
Description: LCD Module Demo Board SED13700 & RA8835 Controllers	REV: 1.1
Date: 5/4/2011 11:14:28 AM	Sheet: 3/4

Rev	Date	By	Release Notes
1.0	April 10, 2009	Jesper Hansen	Initial Release
1.0	May 4, 2011	Tom Deutschman	Increased GND pour clearance

TEST POINTS

- TP1 - PG2
- TP2 - PG1
- TP3 - PG0
- TP4 - PG5
- TP5 - PG3
- TP6 - PG4
- TP7 - J9, Pin 9
- TP8 - J9, Pin 4
- TP9 - AVCC
- TP10 - RESET\
- TP11 - +3V3
- TP12 - +5V
- TP13 - LCD\_V0
- TP14 - LCD\_VEE
- TP15 - VEE
- TP16 - GND
- TP17 - GND
- TP18 - GND
- TP19 - GND



Crystalfontz America Inc.

12412 E. Saltese Ave. Spokane Valley WA 99216  
(888) 206-9720www.crystalfontz.com

TITLE: cfa_10018		BY: Jesper Hansen
Description: LCD Module Demo Board SED13700 & RA8835 Controllers		REV: 1.1
Date: 5/4/2011 11:14:28 AM		Sheet: 4/4