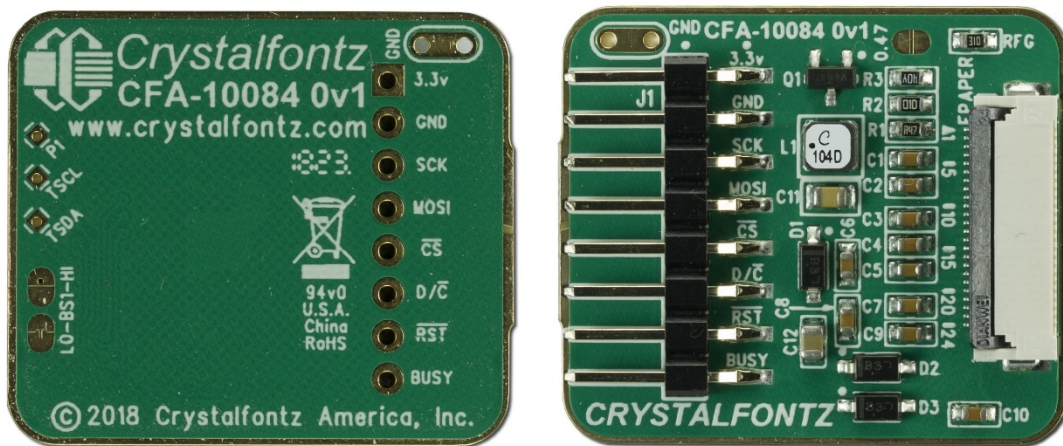




## CFA-10084 ePaper Adapter Board



Datasheet Release Date 2018-07-26

### **Crystallfontz America, Inc.**

12412 East Saltese Avenue  
Spokane Valley, WA 99216-0357  
Phone: 888-206-9720  
Fax: 509-892-1203  
Email: [support@crystallfontz.com](mailto:support@crystallfontz.com)  
URL: [www.crystallfontz.com](http://www.crystallfontz.com)



## TABLE OF CONTENTS

1. General Information .....	3
2. Introduction .....	4
3. Absolute Maximum Ratings .....	4
4. Connection Information .....	4
5. Jumper Locations and Functions .....	5
5.1. RESE Jumper .....	5
5.2. BS1 Jumpers (SPI) .....	5
6. Mechanical Drawing .....	6
7. Schematic .....	7



## 1. General Information

### Datasheet Revision History

Datasheet Release: **2018-07-26**  
Datasheet for the CFA-10084 ePaper Adapter Board

### Product Change Notifications

You can check for or subscribe to [Part Change Notices](#) for this part on our website.

### Variations

Slight variations between lots are normal (e.g., contrast, color, or intensity).

### Volatility

This display module has volatile memory.

### Disclaimer

Certain applications using Crystalfontz America, Inc. products may involve potential risks of death, personal injury, or severe property or environmental damage ("Critical Applications"). CRYSTALFONTZ AMERICA, INC. PRODUCTS ARE NOT DESIGNED, INTENDED, AUTHORIZED, OR WARRANTED TO BE SUITABLE FOR USE IN LIFE-SUPPORT APPLICATIONS, DEVICES OR SYSTEMS OR OTHER CRITICAL APPLICATIONS. Inclusion of Crystalfontz America, Inc. products in such applications is understood to be fully at the risk of the customer. In order to minimize risks associated with customer applications, adequate design and operating safeguards should be provided by the customer to minimize inherent or procedural hazard. Please contact us if you have any questions concerning potential risk applications.

Crystalfontz America, Inc. assumes no liability for applications assistance, customer product design, software performance, or infringements of patents or services described herein. Nor does Crystalfontz America, Inc. warrant or represent that any license, either express or implied, is granted under any patent right, copyright, or other intellectual property right of Crystalfontz America, Inc. covering or relating to any combination, machine, or process in which our products or services might be or are used.

All specifications in datasheets on our website are, to the best of our knowledge, accurate but not guaranteed. Corrections to specifications are made as any inaccuracies are discovered.

Company and product names mentioned in this publication are trademarks or registered trademarks of their respective owners.

Copyright © 2018 by Crystalfontz America, Inc., 12412 East Saltese Avenue, Spokane Valley, WA 99216 U.S.A.

## 2. Introduction

This ePaper adapter board enables quick and easy setup for the ePaper display modules. It's compatible with our entire line of ePaper display modules.

All of the components are on one side of the board for easy attachment to the back of any ePaper display. This backpack style adapter board minimizes the amount of space needed for your design.

- Overall dimensions (mm): 30 (W) x 26 (H)
- Weight: 2.4 grams
- Pin Count: 8

## 3. Absolute Maximum Ratings

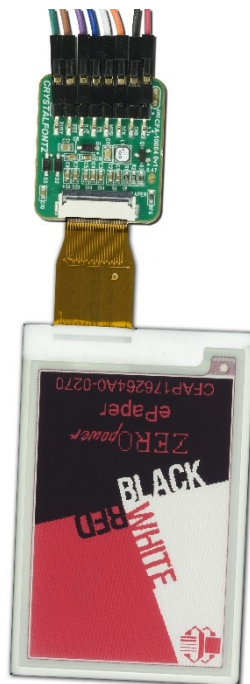
Parameter	Symbol	Min	Max	Unit
Supply Voltages for Logic	V <sub>DD</sub>	+3.3	5.5	V
Operating Temperature	T <sub>OP</sub>	-20	70	°C
Storage Temperature	T <sub>STG</sub>	-30	80	°C
Humidity Range (non-condensing)	RH	10	90	%

*Notes:*

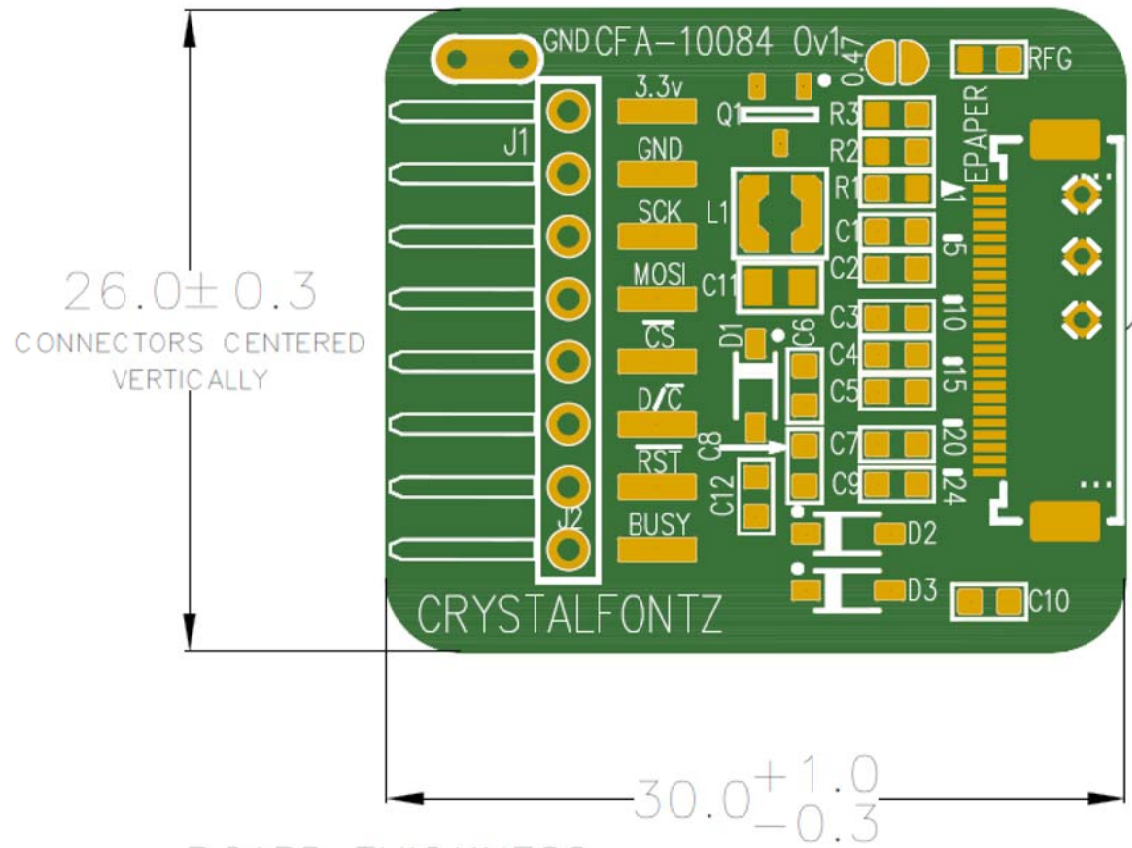
- (1) Functional operation should be restricted to the limits in the ePaper datasheet used in conjunction with this adapter board.
- (2) These are stress ratings only. Extended exposure to the absolute maximum ratings listed above may affect device reliability or cause permanent damage.

## 4. Connection Information

The ZIF-end of the ePaper display should be placed into the ZIF connector on the adapter board so that when the components of the adapter board are facing up, the display is also facing up, see example below.







SCORE-AND-BREAK  
IN THIS AREA. EDGE  
MAY BE ROUGH.

BOARD THICKNESS:  
.8MM NOMINAL

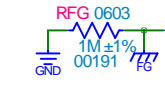


PART NUMBER(S) CFA-10084 Adapter Board	SCALE Not to Scale	COPYRIGHT © 2018 BY CRYSTALFONTZ AMERICA, INC. WWW.CRYSTALFONTZ.COM
DRAWING NUMBER CFA-10084 master	UNITS Millimeters	

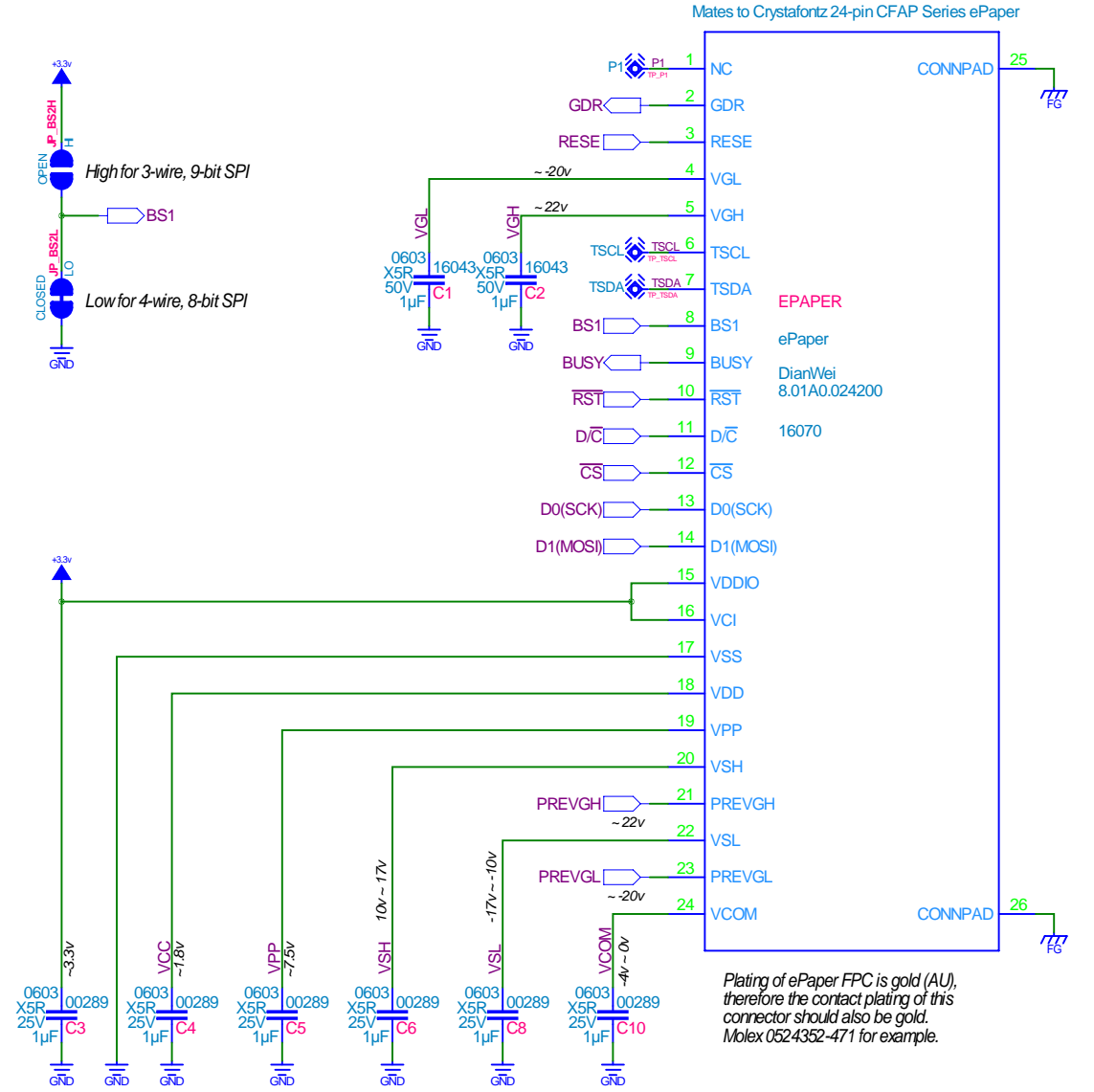
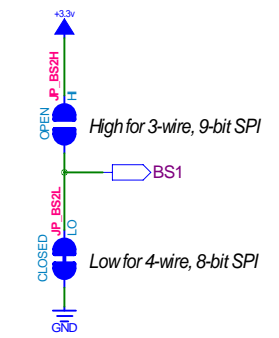
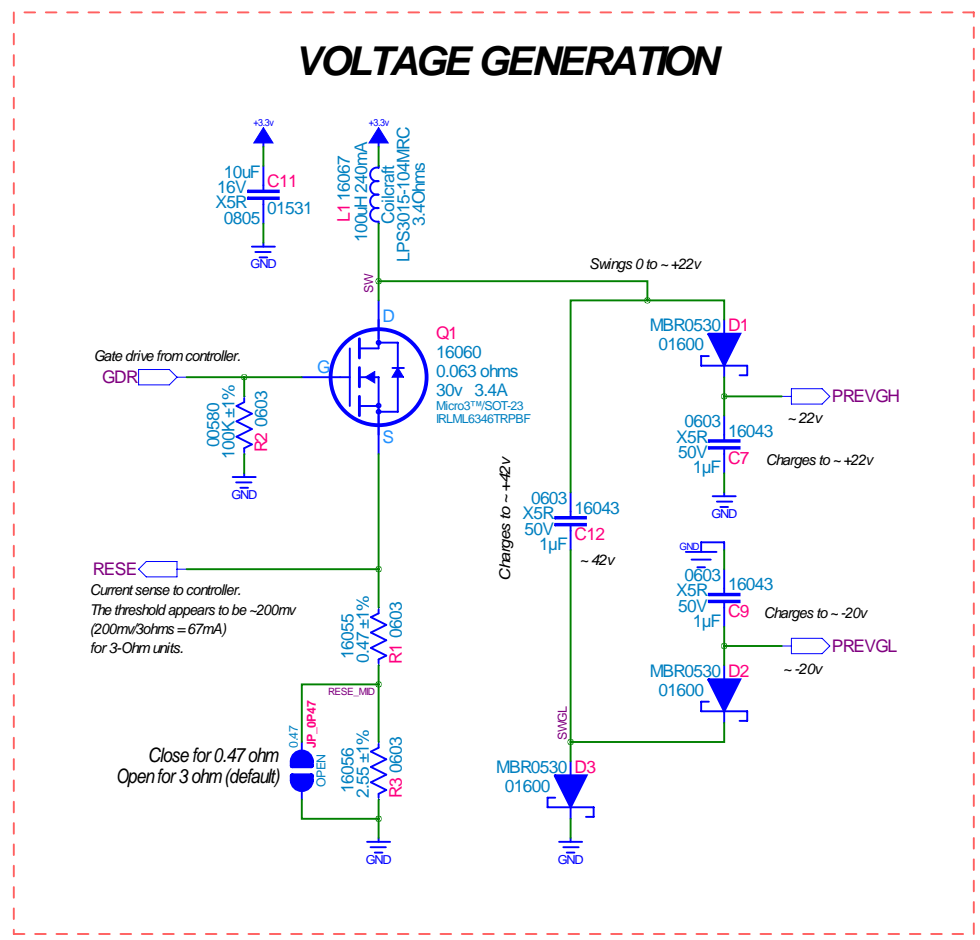
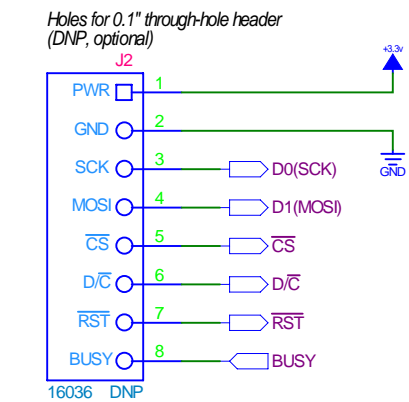
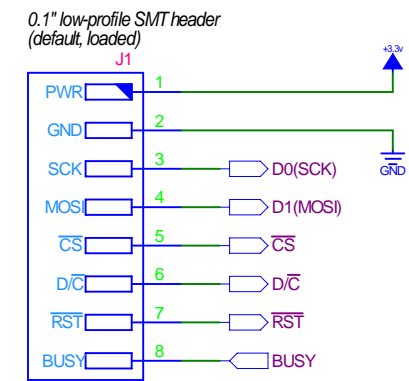
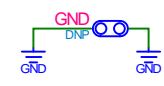


REV	ENGINEER	DATE	REMARKS
0v0	BAC	2018-04-04	Initial Creation
0v1	BAC	2018-05-17	Ind val, C12 val, JP_0P47 open, CN FPC
-	-	-	-
-	-	-	-
-	-	-	-

ESD border discharge



Scope Ground



Example design for reference only.

**Crystalfontz America, Inc.**

CFA-10084: ePaper Adapter Board 24-pin

Page 1/1: Schematic

PRODUCT NAME:	PRODUCT REVISION:	PCB NUMBER:	PCB REVISION:
CFA-10084	0v1	PCB-10084	0v1

Copyright © 2018 Crystalfontz America, Inc.