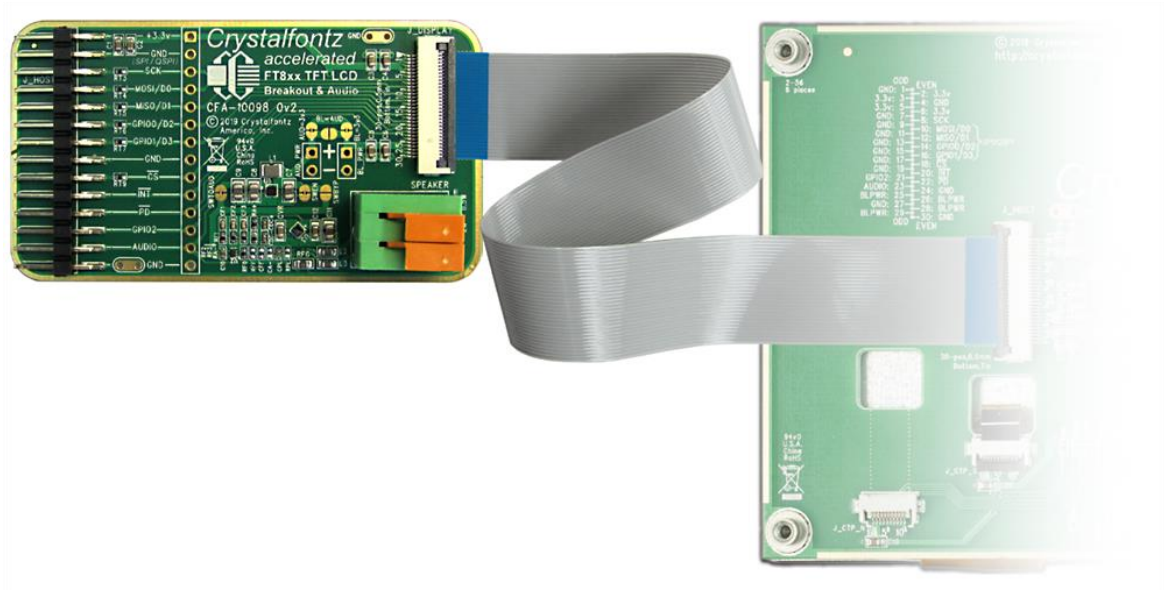




BREAKOUT / AUDIO BOARD
FOR
CRYSTALFONTZ DISPLAYS WITH FT8xx
EVE GRAPHICS ACCELERATOR

DATASHEET



CFA10098

Datasheet Release: 2019/04/15

Crystallfontz America, Inc.

12412 East Saltese Avenue
Spokane Valley, WA 99216-0357
Phone: 888-206-9720
Fax: 509-892-1203
Email: support@crystallfontz.com
URL: www.crystallfontz.com



Table of Contents

1. GENERAL INFORMATION	3
2. INTRODUCTION.....	4
3. KEY FEATURES.....	4
4. ABSOLUTE MAXIMUM RATINGS	4
5. ELECTRICAL CHARACTERISTICS	4
6. JUMPER LOCATIONS AND FUNCTIONS.....	5
6.1. POWER STEERING JUMPERS	5
6.2. AUDIO AMPLIFIER CONFIGURATION.....	5
7. CONNECTION INFORMATION	6
7.1. ZIF CONNECTOR USE WITH FLAT-FLEX-CABLE (FFC)	6
7.2. EXAMPLE DISPLAY CONNECTION #1	7
7.3. EXAMPLE DISPLAY CONNECTION #2	8
8. SCHEMATICS.....	9



1. General Information

Datasheet Revision History

Datasheet Release: 2019/04/15
Datasheet for the CFA10098 display module.

Product Change Notifications

You can check for or subscribe to [Part Change Notices](#) for this display module on our website.

Variations

Slight variations between lots are normal (e.g., contrast, color, or intensity).

Volatility

This display module has volatile memory.

Disclaimer

Certain applications using CrystalFontz America, Inc. products may involve potential risks of death, personal injury, or severe property or environmental damage ("Critical Applications"). CRYSTALFONTZ AMERICA, INC. PRODUCTS ARE NOT DESIGNED, INTENDED, AUTHORIZED, OR WARRANTED TO BE SUITABLE FOR USE IN LIFE-SUPPORT APPLICATIONS, DEVICES OR SYSTEMS OR OTHER CRITICAL APPLICATIONS. Inclusion of CrystalFontz America, Inc. products in such applications is understood to be fully at the risk of the customer. In order to minimize risks associated with customer applications, adequate design and operating safeguards should be provided by the customer to minimize inherent or procedural hazard. Please contact us if you have any questions concerning potential risk applications.

CrystalFontz America, Inc. assumes no liability for applications assistance, customer product design, software performance, or infringements of patents or services described herein. Nor does CrystalFontz America, Inc. warrant or represent that any license, either express or implied, is granted under any patent right, copyright, or other intellectual property right of CrystalFontz America, Inc. covering or relating to any combination, machine, or process in which our products or services might be or are used.

All specifications in datasheets on our website are, to the best of our knowledge, accurate but not guaranteed. Corrections to specifications are made as any inaccuracies are discovered.

Company and product names mentioned in this publication are trademarks or registered trademarks of their respective owners.

Copyright © 2017 by CrystalFontz America, Inc., 12412 East Saltese Avenue, Spokane Valley, WA 99216 U.S.A.



2. Introduction

The Crystallfontz CFA10098 is a breakout and audio amplification board intended for development use with Crystallfontz FT8xx EVE accelerated TFT displays.

This board provides easy to use 0.1-in header pins ideal for testing, prototyping and one-off use with microcontroller based boards and other host interfaces.

Example source-code for the attached EVE accelerated TFT display product is provided on our website.

3. Key Features

- Easy to use 0.1 inch header pins
- 30 position connector for flat-cable connection to the Crystallfontz EVE accelerated displays
- Jumper configurable power and audio options
- EVE compatible PWM audio filter and 2W Class D speaker amplifier

4. Absolute Maximum Ratings

Parameter	Symbol	Min	Max	Unit
Logic Supply Power	VCC (3v3)	0.0	4.0	V
Backlight Supply Power	BL_PWR	<i>see display module datasheet used in conjunction with this adapter board</i>		V
Audio Power Supply	AUD_PWR	0.0	6.0	V
Speaker Load Resistance	R _{J_SPKR}	3.2	-	ohms

Notes:

- *These are stress ratings only. Extended exposure to the absolute maximum ratings listed above may affect device reliability or cause permanent damage.*

5. Electrical Characteristics

Parameter	Symbol	Min	Typ	Max	Unit
Logic Supply Power	VCC (3v3)	(note 1)	3.3	(note 1)	V
Backlight Supply Power	BL_PWR	<i>see display module datasheet used in conjunction with this adapter board</i>			V
Audio Power Supply	AUD_PWR	2.5	3.3	5.5	V
Speaker Load Resistance	R _{J_SPKR}	4.0	4.0	8.0	ohms

Notes:

1. *Functional operation should be restricted to the limits in the display datasheet used in conjunction with this adapter board*



6. Jumper Locations and Functions

6.1. Power Steering Jumpers

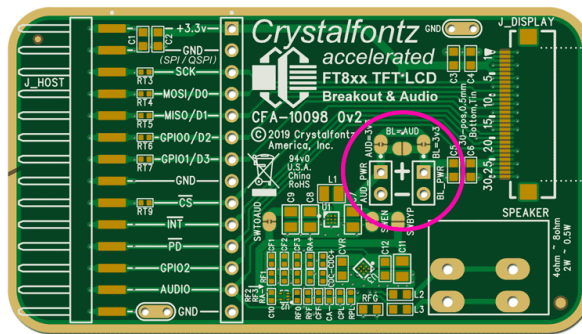
By default, backlight and audio amplifier power is sourced from pin-1 on the JHOST header (typically 3.3V).

If a separate power supply is required for the display backlight, open the BL=3v3 jumper link, then use the BL_PWR header pins to supply power (see note 1).

If a separate power supply is required for the speaker audio amplifier, open the AUD=3v3 jumper link, then use the AUD_PWR header pins to supply power (see note 1).

Note:

1. 0.1 inch headers may need to be soldered on the board to access these power connections



power steering jumper locations

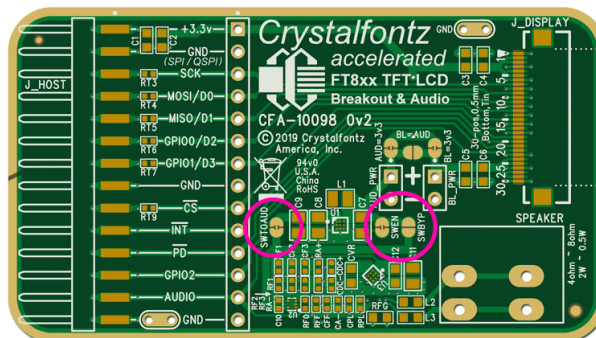
6.2. Audio Amplifier Configuration

By default, the audio amplifier is supplied 3.3V from the logic power supply:

- SWBYP = closed
- SWEN = open
- SWTOAUD = open

There is an experimental 3.3v to 5v 500mA boost supply on the 10098. This circuit may be useful for higher impedance loads, or to isolate the audio supply from a noisy 3.3v main supply. To enable the experimental 3.3v to 5v 500mA boost supply:

- SWBYP = open
- SWEN = closed
- SWTOAUD = closed



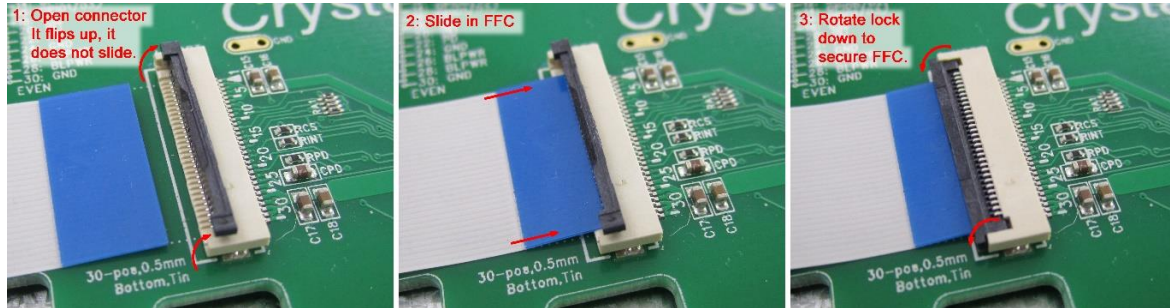
audio configuration jumpers



7. Connection Information

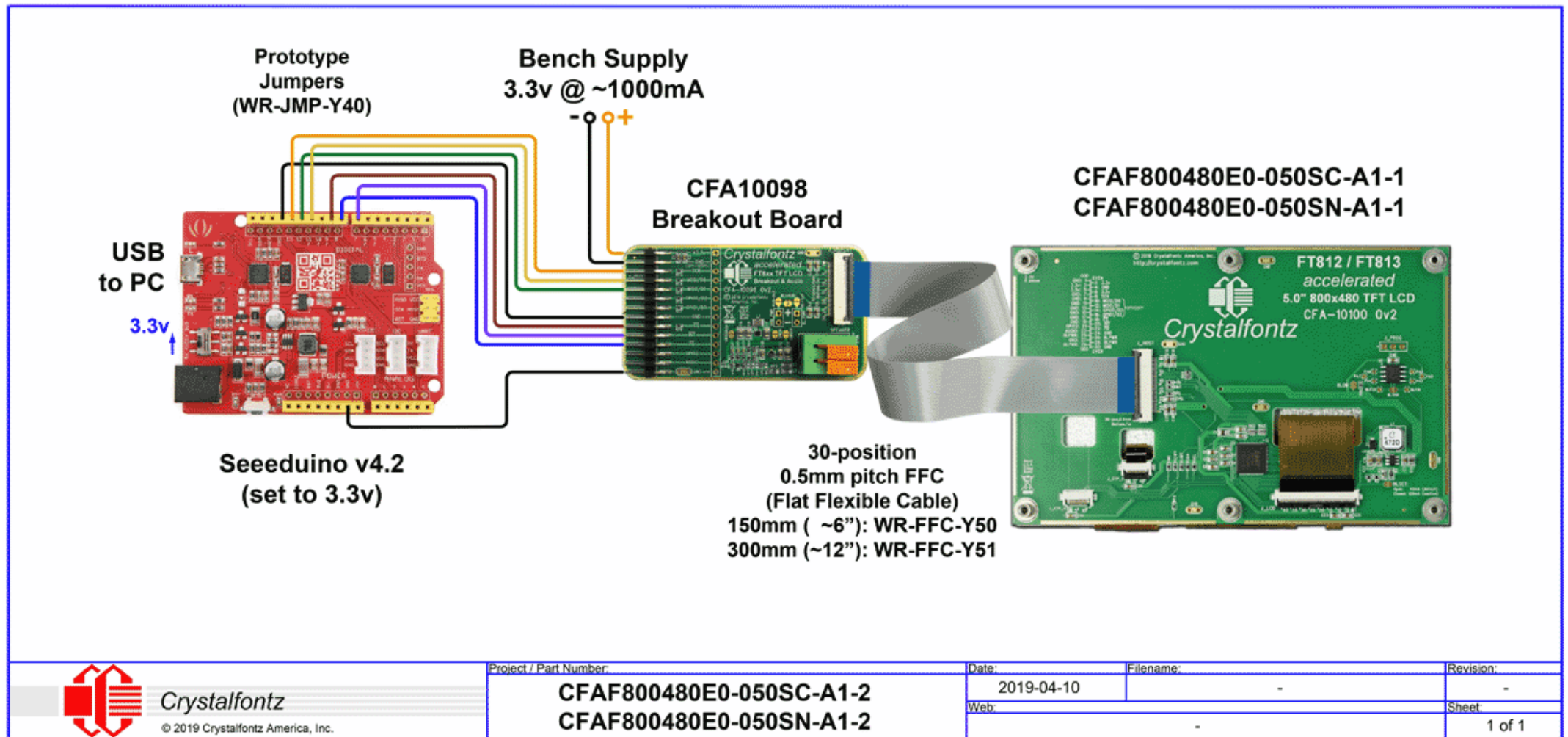
7.1. ZIF Connector Use With Flat-Flex-Cable (FFC)

Please take note of the orientation of the flat-flex-cable, and use of the locking clip in the following photos.



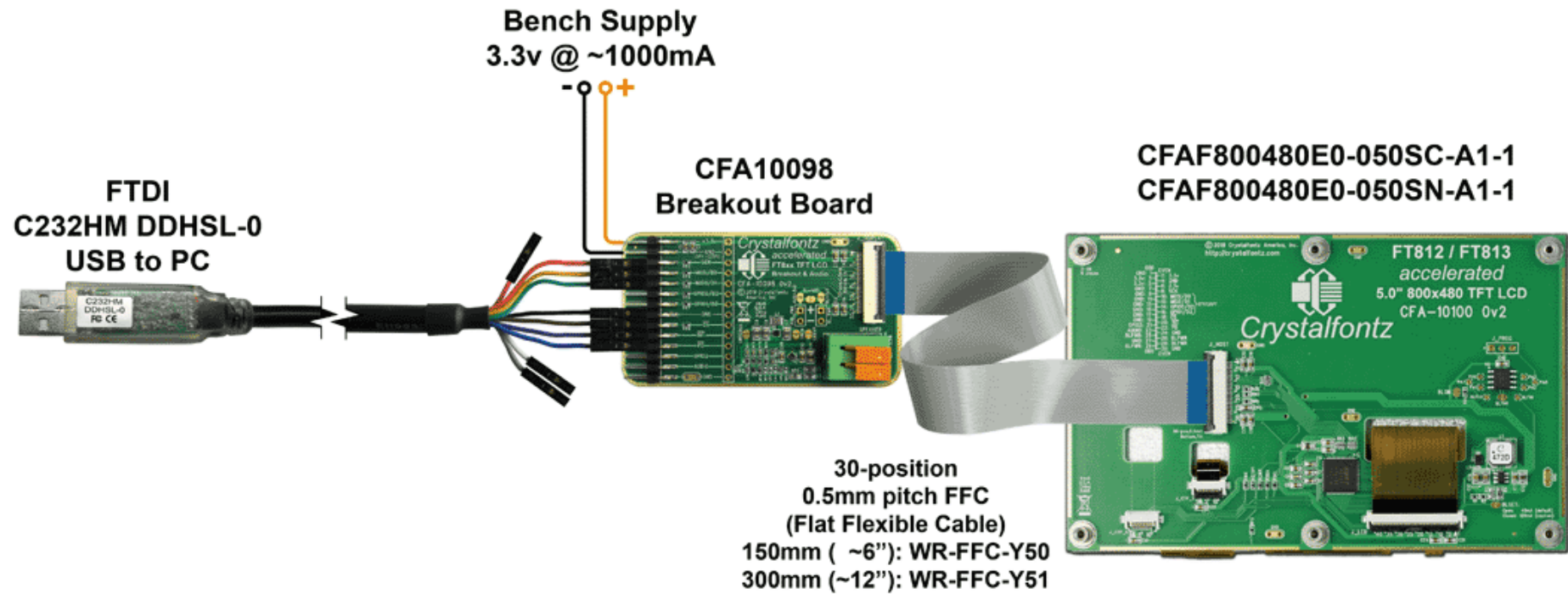
7.2. Example Display Connection #1

This example shows connection of the CFA10098 to a CFAF800480E0-050SC-A1 display, and a Seeeduino v4.2 microcontroller board.



7.3. Example Display Connection #2

This example shows connection of the CFA10098 to a CFAF800480E0-050SC-A1 display, and a FTDI C232HM USB programming cable.



Crystallfontz

© 2019 Crystallfontz America, Inc.

Project / Part Number:

CFAF800480E0-050SC-A1-2

CFAF800480E0-050SN-A1-2

Date:

2019-04-10

Filename:

-

Revision:

-

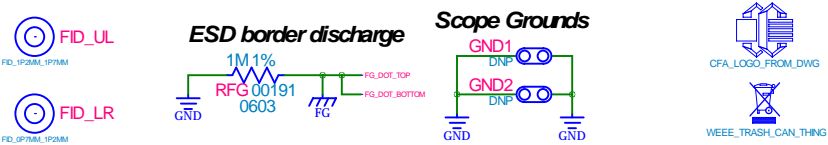
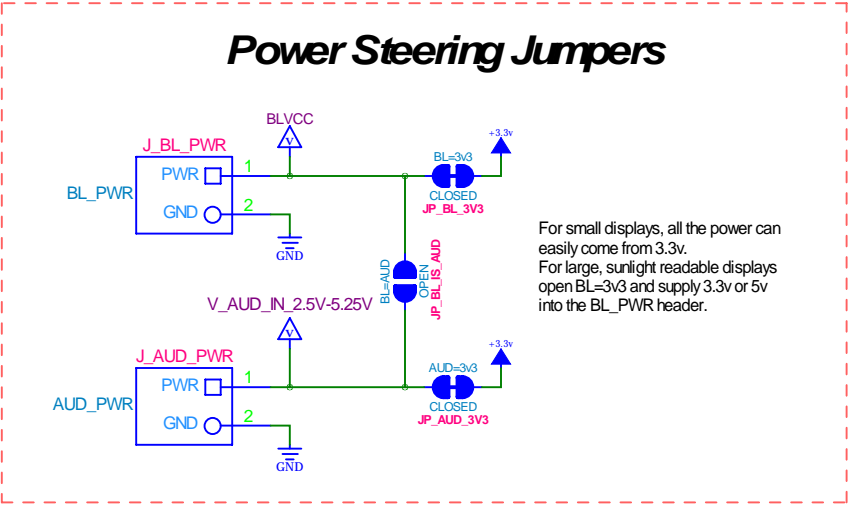
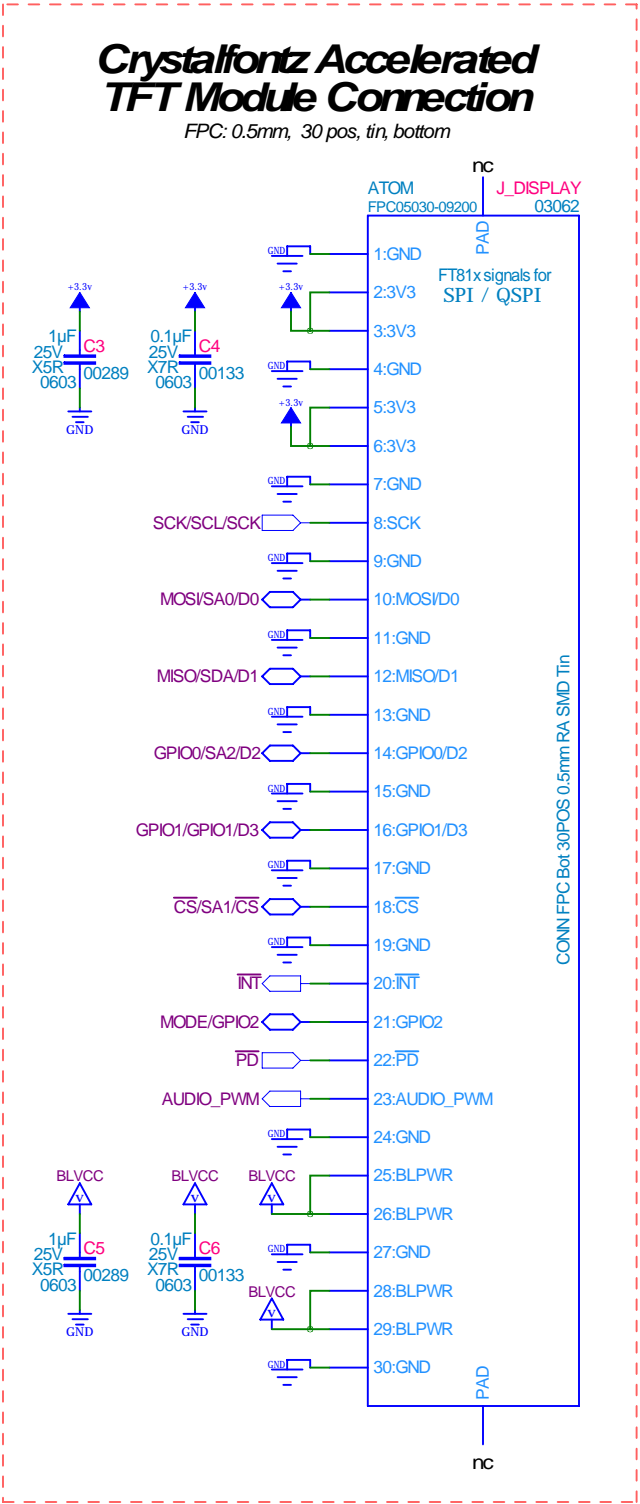
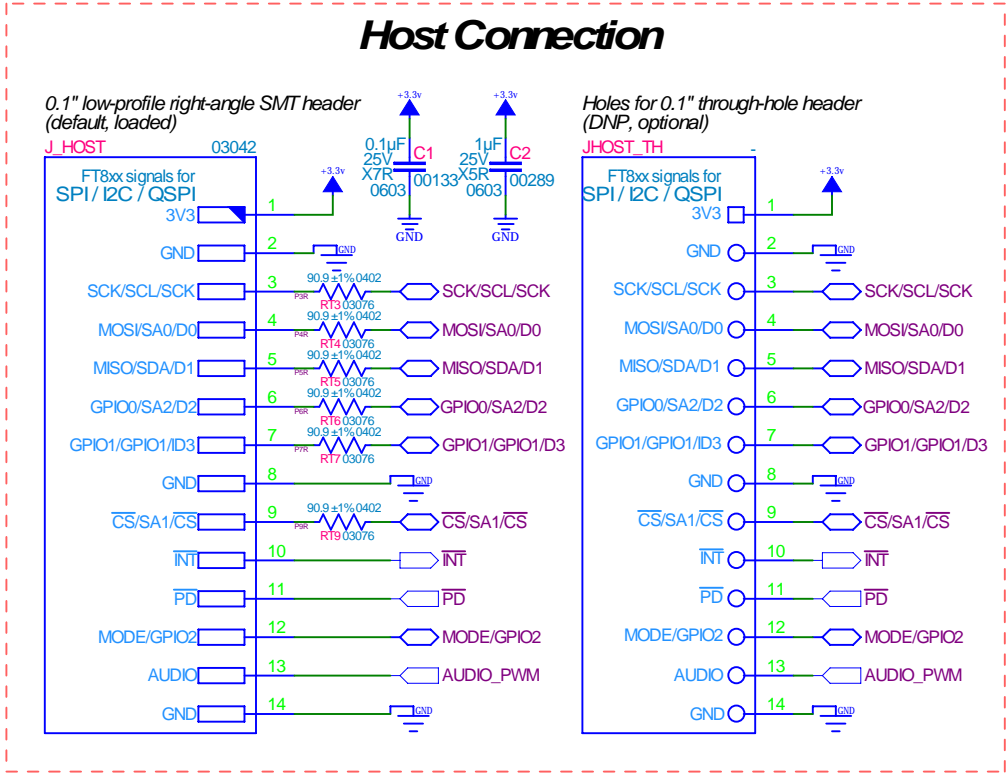
Web:

-

Sheet:

1 of 1

REV	ENGINEER	DATE	REMARKS
0v0	BAC	2018-08-23	Initial Creation
0v1	BAC	2018-10-10	Changed to PAM8012AZN
0v2	BAC	2018-12-31	Change to 30-pin connector.
-	-	-	-
-	-	-	-



**Crystalfontz America, Inc.**

Copyright © 2019
Crystalfontz America, Inc.

CFA-10098: FT8xx Breakout & Audio

Page 1/2: Host and Device Connections

PRODUCT NAME:
CFA-10098

PRODUCT REVISION:
0v2

PCB NUMBER:
PCB10098

PCB REVISION:
0v2

